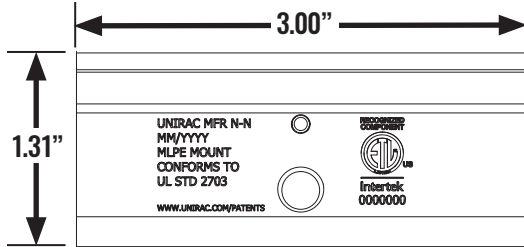


# MLPE MOUNT

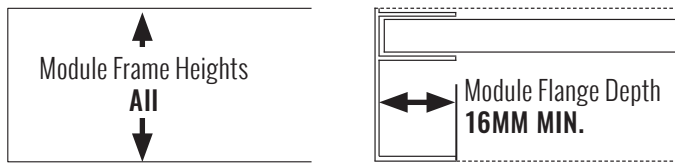
For microinverters and power optimizers, compatible with all module frame heights



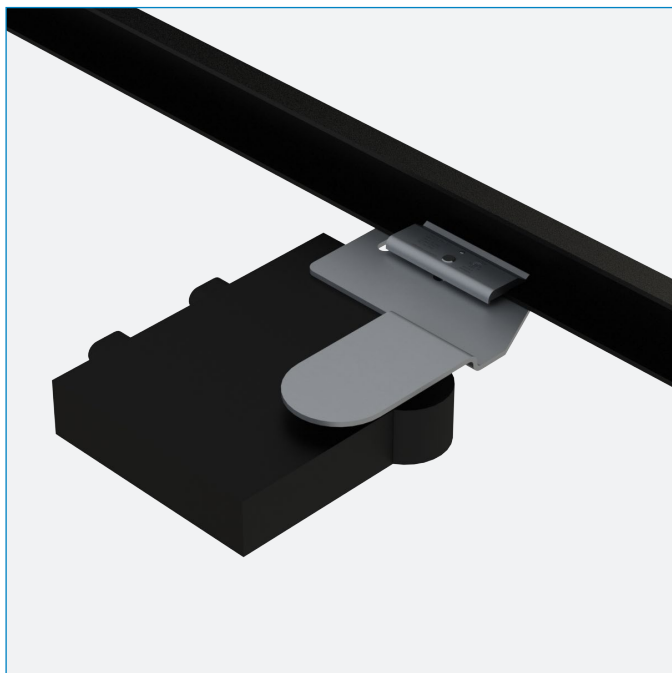
## TECHNICAL DATA



## GENERAL CLIP DIMENSIONS - (DRAWINGS N.T.S)

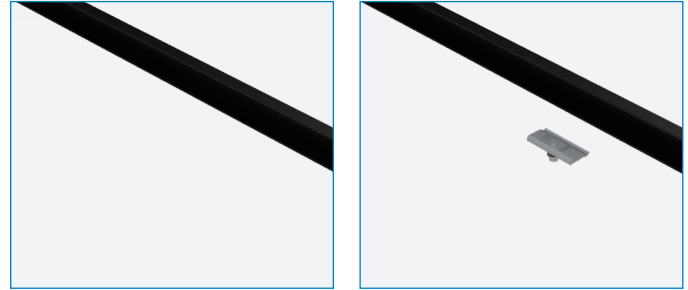


## MINIMUM MODULE FRAME REQUIREMENTS

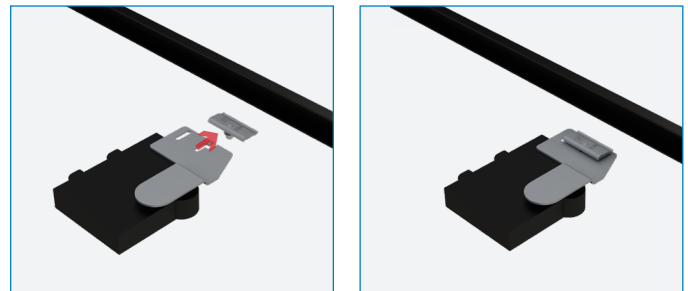


PUB2018SEP27

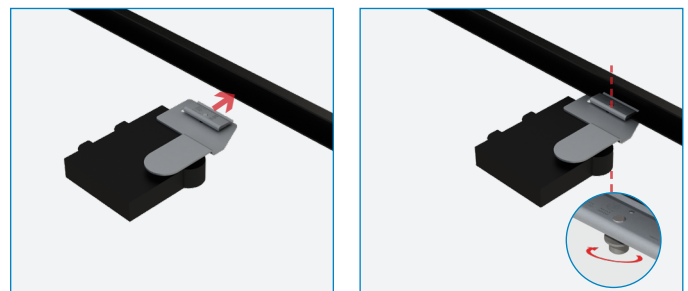
## INSTALLATION STEPS



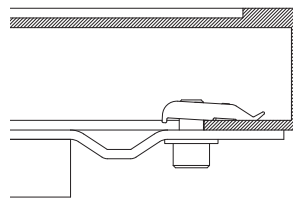
POSITION MLPE MOUNT PARALLEL TO MODULE FRAME



SLIDE MOUNT ONTO MLPE



ENGAGE MLPE & MOUNT ONTO MODULE FRAME FLANGE AND TIGHTEN  
**Required Torque - 20ft-lbs**



INSTALLED CROSS SECTION

**TIP:** Use module frame wire clips during system installation to manage MLPE cables.

**UL2703**  
RECOGNIZED

## APPLICATIONS

- SOLARMOUNT & SUNFRAME Rail Systems
- ROOFMOUNT | RMDT - RM5 - RM10 Ballasted Flat Roof Systems
- SUNFRAME MICRORAIL Racking System

## FEATURES

- For use with Microinverters and Power Optimizers
- Compatible with All Module Frame Heights