

# PRODUCT CATALOG

2025

## PITCHED ROOF

### **NXT UMount | OPEN CHANNEL RAIL-BASED MOUNTING SYSTEM**

ALL System Components 1

### **SOLARMOUNT | RAIL-BASED MOUNTING SYSTEM**

SOLARMOUNT Rail 3

Rail Clamps – UNIVERSAL AF, PRO SERIES 4

Rail Clamps – Standard SM 5

Roof Attachments – SM BUTYL, FLASHLOC, and FLASHKIT PRO 6

Flashloc Anchor 7

Roof Attachments - FLASHKIT Tile Replacement, and SOLARHOOKS 8

Roof Attachments – 2-Piece Al Standoffs, Metal Roof Attachments, and 9

SM Adjustable Tilt Legs

Grounding & Wire Management, Optional Trim & Rail Caps 10

Spare Hardware 11

### **SFM INFINITY | RAIL-LESS MOUNTING SYSTEM**

Micro rail & Splices, Trim Components, COMP Shingle Roof Attachments 12

TILE Roof Attachments, Wire Management, MLPE Mounts and Hex Tool 13

### **METAL X | METAL ROOF RAIL-LESS MOUNTING SYSTEM**

Clamps, Couplings, Hardware 14

Metal Roof Attachments, MLPE Mounts, Wire Management Clips 15

Screw, and Row-to-Row Bonding 16

## FLAT ROOF

### **RM10 EVO | SOUTH FACING 10 DEGREE TILT MOUNTING SYSTEM**

ALL System Components 17

### **GRIDFLEX™ | BUILT FOR SPEED FLAT ROOF SYSTEM**

ALL System Components 18

### **GRIDFLEX 10™ | BUILT FOR SPEED FLAT ROOF SYSTEM**

ALL System Components 19

### **RM5 | SOUTH FACING 5 DEGREE TILT MOUNTING SYSTEM**

ALL System Components 20

### **RMDT | 8 DEGREE EAST-WEST TILT MOUNTING SYSTEM**

ALL System Components 21

### **ECOFOOT2+ | UNIVERSAL BALLASTED MOUNTING SYSTEM**

ALL System Components 22

### **ECOFOOT5D | HIGH DENSITY 5 DEGREE MOUNTING SYSTEM**

ALL System Components 23

# TABLE OF CONTENTS



## GROUND MOUNT

### **GROUND FIXED TILT (GFT) | GROUND MOUNT SYSTEM**

ALL System Components 25

### **UNIRAC LARGE ARRAY | GROUND MOUNT SYSTEM**

ALL System Components 26

## E-BOSS / ACCESSORIES

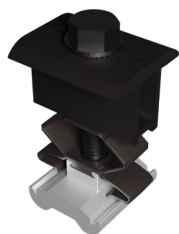
SOLOBOX, Critter Guard, Conduit Mount, MLPE, Ground Lug, Wire Management Clip 27

## NXT UMOUNT RAIL & SPLICE

| P/N      | DESCRIPTION                 | PACK SIZE | SHIP WT. LBS |
|----------|-----------------------------|-----------|--------------|
| 185RLD1  | NXT UMOUNT RAIL - 185" DARK | 168       | 1000         |
| 185RLM1  | NXT UMOUNT RAIL - 185" MILL | 168       | 1000         |
| 168RLD1  | NXT UMOUNT RAIL - 168" DARK | 168       | 1000         |
| 168RLM1  | NXT UMOUNT RAIL - 168" MILL | 168       | 1000         |
| 096RLD1  | NXT UMOUNT RAIL - 96" DARK  | 168       | 520          |
| 096RLM1  | NXT UMOUNT RAIL - 96" MILL  | 168       | 520          |
| 084RLD1  | NXT UMOUNT RAIL - 84" DARK  | 168       | 460          |
| 084RLM1  | NXT UMOUNT RAIL - 84" MILL  | 168       | 460          |
| RLSPLCM2 | NXT UMOUNT RAIL SPLICE      | 20        | 2            |



**NXT UMOUNT® RAIL SYSTEM**



**NXT UMOUNT® COMBO CLAMP**

## NXT UMOUNT MODULE CLAMPS

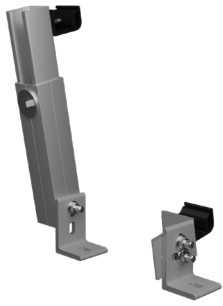
| P/N       | DESCRIPTION                   | PACK SIZE | SHIP WT. LBS |
|-----------|-------------------------------|-----------|--------------|
| CCLAMPD1  | NXT UMOUNT COMBO CLAMP - DARK | 20        | 37           |
| CCLAMPM1  | NXT UMOUNT COMBO CLAMP - MILL | 20        | 37           |
| NUHECLMP1 | NXT HIDDEN END CLAMP W/ CAP   | 4         |              |

## STRONGHOLD ATTACHMENTS

| P/N         | DESCRIPTION                        | PACK SIZE | SHIP WT. LBS |
|-------------|------------------------------------|-----------|--------------|
| SHBUTYLD2   | STRONGHOLD BUTYL ATT KIT #14S DARK | 20        | 11.5         |
| SHBUTYLM2   | STRONGHOLD BUTYL ATT KIT #14S MILL | 20        | 11.5         |
| SHCLMPD2    | STRONGHOLD RAIL CLAMP DARK         | 20        | 4            |
| SHCLMPM2    | STRONGHOLD RAIL CLAMP MILL         | 20        | 4            |
| SHCPKT1     | STRONGHOLD ATT KIT COMP DRK        | 20        | 13           |
| SHCPKM1     | STRONGHOLD ATT KIT COMP MILL       | 20        | 13           |
| XTRABUTL-SH | EXTRA BUTYL PAD - SH, KIT          | 30        |              |
| NUMTLCLMPD  | NXT METAL ROOF RAIL CLAMP DARK     | 20        | 4            |
| NUMTLCLMPM  | NXT METAL ROOF RAIL CLAMP MILL     | 20        | 4            |



**STRONGHOLD™ ATTACHMENT KIT**



**NXT UMOUNT® ADJUSTABLE TILT LEGS**

## NXT ADJUSTABLE TILT LEGS & L-FEET

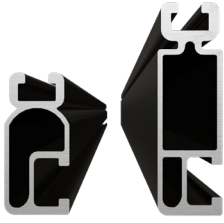
| P/N         | DESCRIPTION                  | PACK SIZE | SHIP WT. LBS |
|-------------|------------------------------|-----------|--------------|
| NUTILTLEG12 | NXT ADJ TILT KIT, 12", W/HDW | 10        |              |
| NUTILTLEG30 | NXT ADJ TILT KIT, 30", W/HDW | 10        |              |



**NXT UMOUNT® MLPE & LUG CLAMP**

## WIRE MANAGEMENT & ACCESSORIES

| P/N      | DESCRIPTION                  | PACK SIZE | SHIP WT. LBS |
|----------|------------------------------|-----------|--------------|
| ENDCAPD1 | NXT UMOUNT RL & CLMP CAP KIT | 20        | 5            |
| WRMCLPD1 | NXT UMOUNT WIRE MGMT CLIP    | 20        | 1            |
| WRMCNSD1 | NXT UMOUNT NS WIRE MGMT CLIP | 20        | 13           |
| NULGMLP1 | NXT MLPE & GND LUG CLAMP     | 20        | 20           |



**SOLARMOUNT® RAIL SYSTEM**

## SOLARMOUNT LIGHT RAILS-DISTRIBUTOR PACK

| P/N     | DESCRIPTION             | PACK SIZE | SHIP WT. LBS |
|---------|-------------------------|-----------|--------------|
| 315185D | SM LIGHT RAIL 185" DRK  | 144       | 1512         |
| 315185M | SM LIGHT RAIL 185" MILL | 144       | 1512         |
| 315246D | SM LIGHT RAIL 246" DRK  | 144       | 1452.38      |
| 315246M | SM LIGHT RAIL 246" MILL | 144       | 1452.384     |

## SOLARMOUNT STANDARD RAILS-DISTRIBUTOR PACK

| P/N     | DESCRIPTION       | PACK SIZE | SHIP WT. LBS |
|---------|-------------------|-----------|--------------|
| 310132C | SM RAIL 132" CLR  | 144       | 1188         |
| 320132M | SM RAIL 132" MILL | 144       | 1188         |
| 310168C | SM RAIL 168" CLR  | 144       | 1512         |
| 320168M | SM RAIL 168" MILL | 144       | 1512         |
| 310168D | SM RAIL 168" DRK  | 144       | 1512         |
| 320185M | SM RAIL 185" MILL | 144       | 1665         |
| 310185D | SM RAIL 185" DRK  | 144       | 1665         |
| 310246C | SM RAIL 246" CLR  | 144       | 2214         |
| 320246M | SM RAIL 246" MILL | 144       | 2214         |
| 310246D | SM RAIL 246" DRK  | 144       | 2214         |

## SOLARMOUNT STANDARD RAILS-PRO-PAK BUNDLE OF 8 RAILS

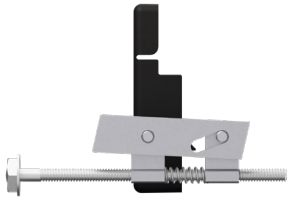
| P/N       | DESCRIPTION            | PACK SIZE | SHIP WT. LBS |
|-----------|------------------------|-----------|--------------|
| 310246C-B | SM RAIL 246" CLR 8PK   | 8         | 123          |
| 320246M-B | SM RAIL 246" MILL 8 PK | 8         | 123          |



**UNIVERSAL AF END CLAMPS**

## UNIVERSAL AESTHETIC FASTENER (AF) MODULE CLAMPS

| P/N     | DESCRIPTION                 | PACK SIZE | SHIP WT. LBS |
|---------|-----------------------------|-----------|--------------|
| 302045D | UNIVERSAL AF MID CLAMP DRK  | 20        | 2.2          |
| 302045M | UNIVERSAL AF MID CLAMP MILL | 20        | 2.2          |
| 302050D | UNIVERSAL AF END CLAMP DRK  | 20        | 2.95         |
| 302050M | UNIVERSAL AF END CLAMP MILL | 20        | 2.95         |



**PRO SERIES HIDDEN END CLAMP**

## PRO SERIES MODULE CLAMPS

| P/N     | DESCRIPTION           | PACK SIZE | SHIP WT. LBS |
|---------|-----------------------|-----------|--------------|
| 302030D | SM MIDCLAMP PRO DRK   | 20        | 2.2          |
| 302030M | SM MIDCLAMP PRO MILL  | 20        | 2.2          |
| 302035M | SM ENDCLAMP PRO W/CAP | 4         | 0.6          |

## SOLARMOUNT STANDARD MODULE CLAMPS



**SOLARMOUNT® ENDCLAMP**



**SOLARMOUNT® MID CLAMP**

| P/N     | DESCRIPTION               | PACK SIZE | SHIP WT. LBS |
|---------|---------------------------|-----------|--------------|
| 302021C | SM ENDCLAMP B CLR AL      | 20        | 2            |
| 302021D | SM ENDCLAMP B DRK AL      | 20        | 2            |
| 302022C | SM ENDCLAMP C CLR AL      | 20        | 2            |
| 302022D | SM ENDCLAMP C DRK AL      | 20        | 2            |
| 302023C | SM ENDCLAMP D CLR AL      | 20        | 2            |
| 302023D | SM ENDCLAMP D DRK AL      | 20        | 2            |
| 302024C | SM ENDCLAMP E CLR AL      | 20        | 2            |
| 302024D | SM ENDCLAMP E DRK AL      | 20        | 2            |
| 302025C | SM ENDCLAMP F CLR AL      | 20        | 2            |
| 302025D | SM ENDCLAMP F DRK AL      | 20        | 2            |
| 302026C | SM ENDCLAMP K CLR AL      | 20        | 2            |
| 302026D | SM ENDCLAMP K DRK AL      | 20        | 2            |
| 302027C | SM BND MIDCLAMP BC SS     | 20        | 2            |
| 302027D | SM BND MIDCLAMP BC DRK SS | 20        | 2            |
| 302028C | SM BND MIDCLAMP EF SS     | 20        | 2            |
| 302028D | SM BND MIDCLAMP EF DRK SS | 20        | 2            |
| 302029C | SM BND MIDCLAMP DK SS     | 20        | 2            |
| 302029D | SM BND MIDCLAMP DK DRK SS | 20        | 2            |

### SM STANDARD CLAMP HEIGHT & BOLT LENGTH

| LETTER | MODULE THICKNESS | BOLT LG         |
|--------|------------------|-----------------|
| B      | 30MM - 32MM      | 1.18IN - 1.26IN |
| C      | 33MM - 36MM      | 1.30IN - 1.42IN |
| D      | 38MM - 40MM      | 1.50IN - 1.57IN |
| K      | 39MM - 41MM      | 1.54IN - 1.61IN |
| F      | 45MM - 47MM      | 1.77IN - 1.85IN |
| E      | 50MM - 51MM      | 1.97IN - 2.00IN |





**SOLARMOUNT® BUTYL**

## SOLARMOUNT BUTYL ATTACHMENTS

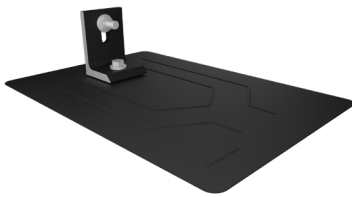
| P/N         | DESCRIPTION                   | PACK SIZE | SHIP WT. LBS |
|-------------|-------------------------------|-----------|--------------|
| 003251W     | DTD #14 3IN SELF-DRILL SCREW  | 80        |              |
| 004BUTYLD   | SOLARMOUNT BUTYL ATT KIT #14S | 20        |              |
| 004BUTYLM   | SOLARMOUNT BUTYL ATT KIT #14S | 20        |              |
| XTRABUTL-SH | EXTRA BUTYL PAD - SH, KIT     | 30        |              |



**FLASHLOC™ DUO**

## FLASHLOC ATTACHMENTS

| P/N     | DESCRIPTION                   | PACK SIZE | SHIP WT. LBS |
|---------|-------------------------------|-----------|--------------|
| 003250W | #12-14 X 2.50 SCREW HDW SS SD | 80        |              |
| 004275D | FLASHLOC DUO DARK             | 20        | 10           |
| 004085D | FLASHLOC COMP KIT DRK         | 20        | 10           |
| 004085M | FLASHLOC COMP KIT MILL        | 20        | 10           |



**FLASHKIT PRO**

## FLASHKIT PRO & SWITCHBLADE (SB) ATTACHMENTS

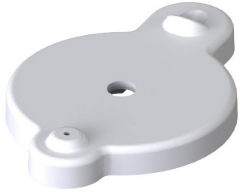
| P/N     | DESCRIPTION             | PACK SIZE | SHIP WT. LBS |
|---------|-------------------------|-----------|--------------|
| 004015D | FLASHKIT SB, DARK       | 10        | 5.5          |
| 004015M | FLASHKIT SB, MILL       | 10        | 5.5          |
| 004055D | FLASHKIT PRO, DRK 10PK  | 10        | 7.35         |
| 004055M | FLASHKIT PRO, MILL 10PK | 10        | 7.35         |



**SOLARMOUNT® RAIL SPLICE**

## SOLARMOUNT RAIL SPLICE

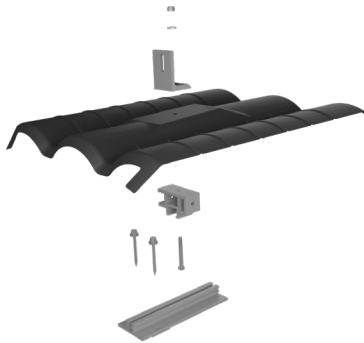
| P/N     | DESCRIPTION                    | PACK SIZE | SHIP WT. LBS |
|---------|--------------------------------|-----------|--------------|
| 303019D | BND SPLICE BAR PRO SERIES DRK  | 20        | 9            |
| 303019M | BND SPLICE BAR PRO SERIES MILL | 20        | 9            |



**FLASHLOC ANCHOR**

## FLASHLOC ANCHOR

| P/N       | DESCRIPTION                  | PACK SIZE | SHIP WT. LBS |
|-----------|------------------------------|-----------|--------------|
| 004FLAN   | FLASHLOC ANCHOR SEALANT-FREE | 20        |              |
| 004FLAN-R | FLASHLOC ANCHOR REG SEALANT  | 20        |              |
| 004FLAN-S | FLASHLOC ANCHOR FOR SILICONE | 20        |              |



**FLASHKIT TR W-TILE**

## FLASHKIT TILE REPLACEMENT TILE ROOF ATTACHMENTS

| P/N     | DESCRIPTION                    | PACK SIZE | SHIP WT. LBS |
|---------|--------------------------------|-----------|--------------|
| 004TRFA | FLASHKIT TR FLAT-TILE ADOBE    | 10        | 30           |
| 004TRFD | FLASHKIT TR FLAT-TILE CHARCOAL | 10        | 30           |
| 004TRFM | FLASHKIT TR FLAT-TILE MILL     | 10        | 30           |
| 004TRSA | FLASHKIT TR SPAN-TILE ADOBE    | 10        | 31           |
| 004TRSD | FLASHKIT TR SPAN-TILE CHARCOAL | 10        | 31           |
| 004TRSF | TR UNIV SUB-FLASHING           | 50        | 10           |
| 004TRSM | FLASHKIT TR SPAN-TILE MILL     | 10        | 31           |
| 004TRWA | FLASHKIT TR W-TILE ADOBE       | 10        | 31           |
| 004TRWD | FLASHKIT TR W-TILE CHARCOAL    | 10        | 31           |
| 004TRWM | FLASHKIT TR W-TILE MILL        | 10        | 31           |



**SOLARHOOK UNIVERSAL**

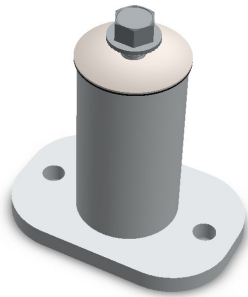
## SOLARHOOK TILE ROOF ATTACHMENTS

| P/N     | DESCRIPTION                     | PACK SIZE | SHIP WT. LBS |
|---------|---------------------------------|-----------|--------------|
| 004AST1 | SOLARHOOK ADJ STONE COATED ST1  | 30        | 32           |
| 004AT1H | SOLARHOOK FLAT TILE             | 30        | 32           |
| 004CT1H | SOLARHOOK SPANISH 7" BASE       | 20        | 26           |
| 004CT2H | SOLARHOOK SPANISH 9" BASE       | 20        | 30           |
| 004CT5H | SOLARHOOK UNIVERSAL             | 30        | 46           |
| 004CT5P | PERFORMANCE HOOK UNIVERSAL      | 30        | 46           |
| 004FLAT | SOLARHOOK FLASHING FLAT         | 30        | 16.5         |
| 004FLCT | SOLARHOOK FLASHING SPANISH FLCT | 30        | 16.5         |
| 004ST1S | SOLARHOOK STONE COATED MT ST1   | 30        | 55           |
| 035014C | HDW LAG BOLT, 1/4 X 3-1/2 SS    | 60        | 2.5          |

## SOLARHOOK TILE FLASHINGS

| P/N     | DESCRIPTION                | PACK SIZE | SHIP WT. LBS |
|---------|----------------------------|-----------|--------------|
| 004TFFM | TILE FLASHING FLAT MILL    | 30        |              |
| 004TFSM | TILE FLASHING SPANISH MILL | 30        |              |
| 004TFWM | TILE FLASHING W MILL       | 30        |              |

## TWO-PIECE ALUMINUM STANDOFF ROOF ATTACHMENT



**ALUMINUM STANDOFF**

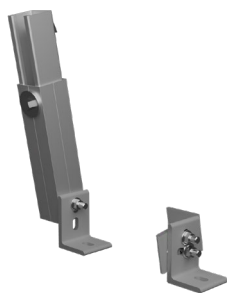
| P/N     | DESCRIPTION                    | PACK SIZE | SHIP WT. LBS |
|---------|--------------------------------|-----------|--------------|
| 004013C | FLASH SOFT AL 18X18 OATEY12836 | 12        | 11           |
| 004300D | STANDOFF 3" 2 PIECE AL, DRK    | 24        | 15           |
| 004300M | STANDOFF 3" 2 PIECE AL, MILL   | 24        | 15           |
| 004400D | STANDOFF 4" 2 PIECE AL, DRK    | 24        | 17           |
| 004400M | STANDOFF 4" 2 PIECE AL, MILL   | 24        | 17           |
| 004600D | STANDOFF 6" 2 PIECE AL, DRK    | 24        | 21           |
| 004600M | STANDOFF 6" 2 PIECE AL, MILL   | 24        | 21           |
| 004700D | STANDOFF 7" 2 PIECE AL, DRK    | 24        | 22           |
| 004700M | STANDOFF 7" 2 PIECE AL, MILL   | 24        | 23           |
| 330007M | 3/8 BOLT/WASHER TO AL STANDOFF | 24        | 1            |



**STANDING SEAM**

## METAL ROOF ATTACHMENTS

| P/N     | DESCRIPTION                    | PACK SIZE | SHIP WT. LBS |
|---------|--------------------------------|-----------|--------------|
| 004130M | STANDING SEAM CLAMP, MINI 1SS  | 50        | 25.2         |
| 004131M | STANDING SEAM CLAMP, STAND 2SS | 50        | 27.8         |
| 004132M | STANDING SEAM CLAMP, WIDE 2SS  | 50        | 30.3         |
| 004257M | R-PANEL METAL ROOF MNT, 9000-S | 50        | 24.1         |
| 004259M | R-PANEL POWERMOUNT ADJUST      | 50        |              |



**SOLARMOUNT TILT LEG**

## SOLARMOUNT ADJUSTABLE TILT LEGS & L-FEET

| P/N         | DESCRIPTION                    | PACK SIZE | SHIP WT. LBS |
|-------------|--------------------------------|-----------|--------------|
| 304001C     | L-FOOT SERRATED W/ T-BOLT, CLR | 20        | 5            |
| 304001D     | L-FOOT SERRATED W/ T-BOLT, DRK | 20        | 5            |
| 307120M     | SM ADJ TILT LEG, 44", W/HDW    | 1         | 4            |
| 307134M     | SM ADJ TILT LEG, 72", W/HDW    | 1         | 5            |
| SMTILTLEG12 | SM ADJ TILT KIT, 12", W/HDW    | 10        |              |
| SMTILTLEG30 | SM ADJ TILT KIT, 30", W/HDW    | 10        |              |

## GROUNDING, BONDING, WIRE MANAGEMENT

### SOLARMOUNT INTEGRATED BONDING MLPE MOUNT

| P/N     | DESCRIPTION                    | PACK SIZE | SHIP WT. LBS |
|---------|--------------------------------|-----------|--------------|
| 008013S | MICRO MNT BND TBOLT 1/4X3/4 SS | 100       | 2            |

### SOLARMOUNT WIRE MANAGEMENT CLIPS

| P/N     | DESCRIPTION                     | PACK SIZE | SHIP WT. LBS |
|---------|---------------------------------|-----------|--------------|
| 008003S | ONE WIRE CLIP, SS, DCS 1306     | 500       | 3            |
| 008004S | TWO WIRE CLIP, SS, DCS 1307     | 500       | 3            |
| 008017S | HEYCO SUNRUNNER 2-S CLIP 100/B  | 500       | 7            |
| 008018S | HEYCO SUNRUNNER 4-2U CLIP 100/B | 500       | 6            |
| 008019S | HEYCO SUNRUNNER CLIP 100/B      | 100       | 7            |
| 008020S | HEYCO SUNRUNNER 4 CLIP 100/B    | 100       | 7            |



HEYCO SUNRUNNER 4-2U CLIP



ILSCO LAY IN LUG

### SOLARMOUNT GROUNDING & BONDING HARDWARE

| P/N     | DESCRIPTION       | PACK SIZE | SHIP WT. LBS |
|---------|-------------------|-----------|--------------|
| 008002S | GROUND WEEBLUG #1 | 20        | 2            |
| 008009P | ILSCO LAY IN LUG  | 20        | 2            |
| 008015S | WIRE BND CLIP     | 10        | 1            |

## OPTIONAL FRONT TRIM & RAIL END CAP

### SOLARMOUNT TRIM

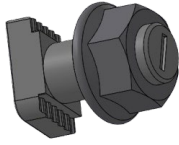
| P/N       | DESCRIPTION          | PACK SIZE | SHIP WT. LBS |
|-----------|----------------------|-----------|--------------|
| 008025S   | SM TRIM END CLIP     | 10        | 0.1          |
| 206072D-B | SM TRIM 168" DRK 8PK | 8         | 75.28        |



SM TRIM

### SOLARMOUNT RAIL END CAP

| P/N     | DESCRIPTION                 | PACK SIZE | SHIP WT. LBS |
|---------|-----------------------------|-----------|--------------|
| 309003P | SM RAIL END CAP, PRO UV-BLK | 100       | 1            |



**BND T-BOLT**

## SOLARMOUNT SPARE HARDWARE

| P/N     | DESCRIPTION                    | PACK SIZE | SHIP WT. LBS |
|---------|--------------------------------|-----------|--------------|
| 009020S | BND T-BOLT&NUT 3/8" X 3/4" SS  | 20        | 2            |
| 009021S | BND T-BOLT&NUT 3/8" X 1" SS    | 20        | 1            |
| 030027C | HDW LAG BOLT, 5/16 X 4         | 50        | 4            |
| 030028C | HDW LAG BOLT, 5/16 X 4.5       | 50        | 4            |
| 330050D | BND T-BOLT&NUT 1/4"X2" DRK SS  | 20        | 1            |
| 330050S | BND T-BOLT&NUT 1/4"X2" SS      | 20        | 1            |
| 330051D | BND T-BOLT&NUT 1/4"X2.25"DRKSS | 20        | 1            |
| 330051S | BND T-BOLT&NUT 1/4"X2.25" SS   | 20        | 1            |
| 330052D | BND T-BOLT&NUT 1/4"X2.5" DRKSS | 20        | 1            |
| 330052S | BND T-BOLT&NUT 1/4"X2.5" SS    | 20        | 1            |



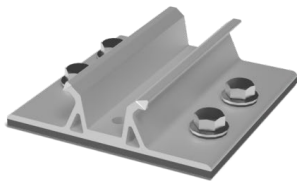
**SFM INFINITY® RAIL-LESS SYSTEM**

### SFM INFINITY MICRORAILS & SPLICES

| P/N     | DESCRIPTION                 | PACK SIZE | SHIP WT. LBS |
|---------|-----------------------------|-----------|--------------|
| 008000U | SFM N/S BONDING CLAMP       | 20        | 3            |
| 250010U | SFM SPLICE 6.5"             | 10        | 10           |
| 250020U | SFM MICRORAIL 2"            | 10        | 6.25         |
| 250030U | SFM ATTACHED SPLICE 8"      | 10        | 15           |
| 253010U | SFM SPLICE 6.5" 30MM        | 10        | 10           |
| 253020U | SFM MICRORAIL 2" 30MM       | 10        | 6.25         |
| 253030U | SFM ATTACHED SPLICE 8" 30MM | 10        | 15           |

### SFM INFINITY STRUCTURAL TRIM COMPONENTS

| P/N     | DESCRIPTION                  | PACK SIZE | SHIP WT. LBS |
|---------|------------------------------|-----------|--------------|
| 008100U | SFM TRIM BONDING CLAMP       | 10        | 1            |
| 009040S | SFM TRINUT KIT               | 100       | 8            |
| 250111U | SFM TRIMRAIL UNIV CLIP W/HDW | 10        | 3            |
| 250120U | SFM TRIM SPLICE DRK          | 10        | 8            |
| 250130U | SFM TRIM END CAPS            | 10        | 0.5          |
| 256072U | SFM TRIMRAIL 72" UNIV DRK    | 4         | 22.46        |



**SFM BUTYL**

### SFM INFINITY BUTYL ATTACHMENT

| P/N      | DESCRIPTION                 | PACK SIZE | SHIP WT. LBS |
|----------|-----------------------------|-----------|--------------|
| SFMBTLM1 | SFM BUTYL ATT KIT #14S MILL | 20        |              |

### SFM INFINITY FLASHKIT PRO COMP SHINGLE ROOF ATTACHMENTS

| P/N     | DESCRIPTION                     | PACK SIZE | SHIP WT. LBS |
|---------|---------------------------------|-----------|--------------|
| 004080D | FLASHKIT SFM NRE COMP DARK      | 5         | 8            |
| 004200D | FLASHKIT SFM TRIM COMP DARK     | 10        | 10           |
| 004201D | FLASHKIT SFM TRIM S COMP DARK   | 10        | 7            |
| 004270D | FLASHKIT SFM SLIDER COMP DARK   | 10        | 9            |
| 004271D | FLASHKIT SFM SLIDER S COMP DARK | 10        | 7            |
| 030040C | STRUCTURAL SCREW 5/16 X 4 SS    | 50        | 3.5          |
| 030045C | STRUCTURAL SCREW 5/16 X 4.5 SS  | 50        | 3            |

## SFM INFINITY TILE ROOF ATTACHMENTS

| P/N     | DESCRIPTION                   | PACK SIZE | SHIP WT. LBS |
|---------|-------------------------------|-----------|--------------|
| 00520TR | FLASHKIT SFMTR TRIM ATT (2/2) | 10        | 8            |
| 00527TR | FLASHKIT SFMTR SLIDER (2/2)   | 10        | 7            |
| 005TRFA | FLASHKIT SFMTR F ADOBE (1/2)  | 10        | 26           |
| 005TRFD | FLASHKIT SFMTR F CHARCL (1/2) | 10        | 26           |
| 005TRFM | FLASHKIT SFMTR F MILL (1/2)   | 10        | 26           |
| 005TRSA | FLASHKIT SFMTR S ADOBE (1/2)  | 10        | 27           |
| 005TRSD | FLASHKIT SFMTR S CHARCL (1/2) | 10        | 27           |
| 005TRSM | FLASHKIT SFMTR S MILL (1/2)   | 10        | 27           |
| 005TRWA | FLASHKIT SFMTR W ADOBE (1/2)  | 10        | 26           |
| 005TRWD | FLASHKIT SFMTR W CHARCL (1/2) | 10        | 26           |
| 005TRWM | FLASHKIT SFMTR W MILL (1/2)   | 10        | 26           |

## SFM INFINITY WIRE MANAGEMENT CLIPS

| P/N     | DESCRIPTION                     | PACK SIZE | SHIP WT. LBS |
|---------|---------------------------------|-----------|--------------|
| 008003S | ONE WIRE CLIP, SS, DCS 1306     | 500       | 3            |
| 008004S | TWO WIRE CLIP, SS, DCS 1307     | 500       | 3            |
| 008017S | HEYCO SUNRUNNER 2-S CLIP 100/B  | 500       | 7            |
| 008018S | HEYCO SUNRUNNER 4-2U CLIP 100/B | 500       | 6            |
| 008019S | HEYCO SUNRUNNER CLIP 100/B      | 100       | 7            |
| 008020S | HEYCO SUNRUNNER 4 CLIP 100/B    | 100       | 7            |
| 205000S | ENPHASE ENGAGE CABLE CLIP       | 100       | 4            |



HEYCO SUNRUNNER 4-2U CLIP

## SFM INFINITY MLPE MOUNT

| P/N     | DESCRIPTION     | PACK SIZE | SHIP WT. LBS |
|---------|-----------------|-----------|--------------|
| 008114M | MLPE MOUNT ASSY | 10        | 1            |

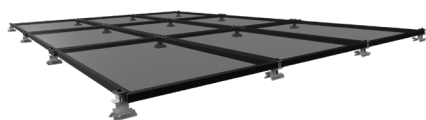
## SFM INFINITY HEX TOOL

| P/N     | DESCRIPTION          | PACK SIZE | SHIP WT. LBS |
|---------|----------------------|-----------|--------------|
| 009030S | UNIRAC 1/4" HEX TOOL | 10        | 1            |



## METALX CLAMPS & COUPLINGS

| P/N     | DESCRIPTION          | PACK SIZE | SHIP WT. LBS |
|---------|----------------------|-----------|--------------|
| ES10146 | METALX END COUPLING  | 24        | 16           |
| ES10368 | METALX COUPLING      | 24        | 28           |
| ES10828 | METALX END CLAMP     | 108       | 24           |
| ES10829 | METALX MID CLAMP     | 108       | 31           |
| ES10835 | METALX END 30 CLAMP  | 108       | 23           |
| ES10836 | METALX MID 30 CLAMP  | 108       | 30           |
| ES10924 | METALX COUPLING 30MM | 24        |              |



METAL X® RAIL-LESS SYSTEM

## METALX CLAMP HARDWARE

| P/N     | DESCRIPTION                   | PACK SIZE | SHIP WT. LBS |
|---------|-------------------------------|-----------|--------------|
| ES10079 | BOLT, SERR FLNG BLK, 5/16X2.5 | 100       |              |
| ES10085 | BOLT, SERR FLNG BLK, 5/16X2   | 100       |              |
| ES10271 | BOLT, SERR FLNG BLK, 5/16X3   | 100       | 5            |
| ES10325 | 5/16-18 SERR FLNG HEX NUT     | 100       | 2            |
| ES10889 | BOLT, CAP HEX, M8 X 55        | 200       | 12           |
| ES10890 | BOLT, CAP HEX, M8 X 60        | 200       | 12           |
| ES10891 | BOLT, CAP HEX, M8 X 65        | 200       | 12           |
| ES10892 | BOLT, CAP HEX, M8 X 70        | 200       | 12           |
| ES10893 | BOLT, CAP HEX, M8 X 75        | 200       | 12           |
| ES10894 | WASHER, M8                    | 200       | 2            |



**STANDING SEAM CLAMP**

## METAL ROOF ATTACHMENTS

| P/N     | DESCRIPTION                    | PACK SIZE | SHIP WT. LBS |
|---------|--------------------------------|-----------|--------------|
| 004130M | STANDING SEAM CLAMP, MINI 1SS  | 50        | 25.2         |
| 004131M | STANDING SEAM CLAMP, STAND 2S! | 50        | 27.8         |
| 004132M | STANDING SEAM CLAMP, WIDE 2SS  | 50        | 30.3         |
| 004257M | R-PANEL METAL ROOF MNT, 9000-S | 50        | 24.1         |
| 004259M | R-PANEL POWERMOUNT ADJUST      | 50        |              |
| ES10674 | STANDING SEAM, STAND 2SS 5/16" | 50        | 24           |
| ES10675 | STANDING SEAM, KLOC 2SS 5/16"  | 48        | 26           |
| ES10676 | STANDING SEAM, WIDE 2SS 5/16"  | 48        | 30           |
| ES10830 | CORRUBRACKET 100T              | 60        | 35           |
| ES10875 | RIBBRACKET I                   | 75        | 36           |
| ES10877 | RIBBRACKET II                  | 75        | 36           |
| ES10879 | RIBBRACKET III                 | 75        | 36           |
| ES10881 | RIBBRACKET IV                  | 75        | 36           |
| ES10918 | STANDING SEAM, MINI 2SS 5/16"  | 48        | 24           |
| ES10919 | STANDING SEAM, KLOC MINI 5/16" | 48        | 24           |
| ES11209 | PM ADJUST SLOTTED              | 50        | 23           |

## METAL X MLPE MOUNT & WIRE MANAGEMENT CLIPS

| P/N     | DESCRIPTION                     | PACK SIZE | SHIP WT. LBS |
|---------|---------------------------------|-----------|--------------|
| 008003S | ONE WIRE CLIP, SS, DCS 1306     | 500       | 3            |
| 008004S | TWO WIRE CLIP, SS, DCS 1307     | 500       | 3            |
| 008017S | HEYCO SUNRUNNER 2-S CLIP 100/B  | 500       | 7            |
| 008018S | HEYCO SUNRUNNER 4-2U CLIP 100/B | 500       | 6            |
| 008019S | HEYCO SUNRUNNER CLIP 100/B      | 100       | 7            |
| 008020S | HEYCO SUNRUNNER 4 CLIP 100/B    | 100       | 7            |
| 205000S | ENPHASE ENGAGE CABLE CLIP       | 100       | 4            |
| 008021S | SINGLE TRUNK CABLE CLIP         | 100       | 7            |
| 008115M | MLPE TIGER CLIP                 | 48        | 11           |

## METAL ROOF SCREWS

| P/N     | DESCRIPTION                         | PACK SIZE | SHIP WT. LBS |
|---------|-------------------------------------|-----------|--------------|
| ES10831 | ROOFING SCREW, METAL TO WOOD, 1.5"  | 240       | 12           |
| ES10883 | ROOFING SCREW, METAL TO METAL, 1.5" | 240       | 12           |

## METALX ROW-TO-ROW BONDING

| P/N     | DESCRIPTION                  | PACK SIZE | SHIP WT. LBS |
|---------|------------------------------|-----------|--------------|
| ES10201 | ECOX BONDING JUMPER 8"       | 5         | 1            |
| ES10260 | ECOX ROW TO ROW BONDING CLIP | 800       | 4            |
| ES11108 | METALX 30MM ROW BONDING CLIP | 10        | 0.1          |

## RM10 EVO BALLAST BAYS, CLAMPS & MID SUPPORT

| P/N       | DESCRIPTION                  | PACK SIZE | SHIP WT. LBS |
|-----------|------------------------------|-----------|--------------|
| 370010    | RM10 EVO FIELD BAY           | 100       |              |
| 370011    | RM10 EVO NORTH BAY           | 72        |              |
| 370022    | EVO MOD CLAMP SIDE BOLT BULK | 100       |              |
| 370023    | EVO MOD CLAMP BULK           | 100       |              |
| 370030    | EVO MID SUPPORT              | 20        | 355          |
| 370010-US | RM10 EVO FIELD BAY (US)      | 50        |              |

## RM10 EVO MLPE MOUNTS, GROUNDING & BONDING HARDWARE

| P/N     | DESCRIPTION               | PACK SIZE | SHIP WT. LBS |
|---------|---------------------------|-----------|--------------|
| 008114M | MLPE MOUNT ASSY           | 10        | 1            |
| 008115M | MLPE TIGER CLIP           | 48        | 11           |
| 205000S | ENPHASE ENGAGE CABLE CLIP | 100       | 4            |
| 008002S | GROUND WEEBLUG #1         | 20        | 2            |
| 008009P | ILSCO LAY IN LUG          | 20        | 2            |

## RM10 EVO ROOF PAD & ATTACHMENT KIT

| P/N    | DESCRIPTION             | PACK SIZE | SHIP WT. LBS |
|--------|-------------------------|-----------|--------------|
| 310760 | RM10 EVO ROOF PAD       | 200       | 35           |
| 310771 | RM10 EVO ATTACHMENT KIT | 1         | 2.5          |

## FLASHLOC RM FLAT ROOF ATTACHMENT

FLASHLOC™ RM is a lightweight, durable, powder-coated cast aluminum roof attachment solution that provides fast, easy installation and helps save labor costs. FLASHLOC™ RM is compatible with most roofing materials and is applicable for almost all solar racking form factors. Rigorous mechanical, sealing, and ease-of-install testing has been successfully completed for assurance of long-term reliability.

| P/N    | DESCRIPTION | PACK SIZE | SHIP WT. LBS |
|--------|-------------|-----------|--------------|
| 310999 | FLASHLOC RM | 10        | 17           |



RM10 EVO FLAT ROOF SYSTEM



FLASHLOC RM

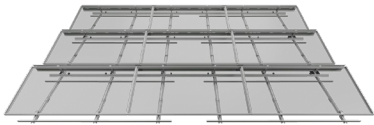
## GRIDFLEX COMPONENTS

| P/N    | DESCRIPTION                   | PACK SIZE | SHIP WT. LBS |
|--------|-------------------------------|-----------|--------------|
| 360010 | GRIDFLEX NORTH RAIL           | 20        | 23           |
| 360020 | GRIDFLEX MID RAIL             | 10        | 29           |
| 360030 | GRIDFLEX SOUTH RAIL           | 20        | 26           |
| 360050 | GRIDFLEX 5D SOUTH CLMP ASSY   | 20        | 17           |
| 360060 | GRIDFLEX LANDER PAD           | 50        | 18           |
| 360061 | GRIDFLEX HARDWARE KIT         | 80        | 5            |
| 360071 | GRIDFLEX BALLAST TRAY, 62-69" | 5         | 32           |
| 360081 | GRIDFLEX BALLAST TRAY, 77-83" | 5         | 36           |
| 360090 | RM GRIDFLEX DEFLECTOR 62-69"  | 5         | 23           |
| 360100 | RM GRIDFLEX DEFLECTOR 77-83"  | 5         | 28           |
| 360101 | GRIDFLEX BALLAST TRAY, 83-92" | 5         | 35           |
| 360102 | RM GRIDFLEX DEFLECTOR, 83-92" | 5         | 20           |
| 360110 | GRIDFLEX DEFLECTOR 92-100"    | 5         |              |
| 360120 | GRIDFLEX BALLAST TRAY 92-100" | 5         |              |
| 360200 | GRIDFLEX 5D MID SUPPORT       | 25        |              |



**GRIDFLEX 5 FLAT ROOF SYSTEM**

## GRIDFLEX 10 COMPONENTS



**GRIDFLEX10 FLAT ROOF SYSTEM**

| P/N      | DESCRIPTION  | PACK SIZE | SHIP WT. LBS |
|----------|--|-----------|--------------|
| 360031   | GRIDFLEX SOUTH RAIL, BALLAST                       | 20        |              |
| 360250   | GRIDFLEX ATT CONNECTION KIT                        |           |              |
| 360255   | GRIDFLEX ATTACHMENT ALT HDW KIT                    | 50        |              |
| 380010   | GF10 SR, MW 39-45"                                 | 20        |              |
| 380020   | GF10 SR, MW 45-52"                                 | 20        |              |
| 380050   | GF10 RAIL STIFFENER, MW 39-45"                     | 20        |              |
| 380051   | GF10 RAIL STIFFENER, MW 45-52"                     | 20        |              |
| 380100   | GRIDFLEX10 MID-RAIL, MW 39-45", ROW SPACING 10/13" | 20        |              |
| 380110   | GRIDFLEX10 MID-RAIL, MW 45-52", ROW SPACING 10/13" | 20        |              |
| 380120   | GRIDFLEX10 MID-RAIL, MW 39-45", ROW SPACING 17"    | 20        |              |
| 380130   | GRIDFLEX10 MID-RAIL, MW 45-52", ROW SPACING 17"    | 20        |              |
| 380200   | GF10 NR  | 20        |              |
| 380300   | GRIDFLEX10 BALLAST RAIL                            | 10        |              |
| 380301   | GF10 BALLAST RAIL BRACE                            | 25        |              |
| 380400   | GF10 WIND DEFLECTOR <69"                           | 10        |              |
| 380401   | GF10 WIND DEFLECTOR 69-73"                         | 10        |              |
| 380402   | GF10 WIND DEFLECTOR 73-77"                         | 10        |              |
| 380405   | GF10 WIND DEF END BRACKET                          | 50        |              |
| 380410   | GF10 WIND DEFLECTOR 77-82"                         | 10        |              |
| 380420   | GF10 WIND DEFLECTOR 82-87"                         | 10        |              |
| 380430   | GF10 WIND DEFLECTOR 87-92"                         | 10        |              |
| 380440   | GF10 WIND DEFLECTOR 92-97"                         | 10        |              |
| 380450   | GF10 WIND DEFLECTOR 97-100"                        | 10        |              |
| 380600   | GRIDFLEX10 NORTH CLMP ASSY                         | 20        |              |
| 380601   | GRIDFLEX10 NORTH CLMP ASSY (UPDATED)               | 20        |              |
| 380700   | GF10 SOUTH CLMP ASSY                               | 20        |              |
| 380800   | ROOF PAD GRIDFLEX 10                               | 150       |              |
| 380805   | ROOF PAD - SNAP                                    | 50        |              |
| 380900   | GF10 WIRE MANAGEMENT CLIP                          | 30        |              |
| 380920   | GF10 WIRE MANAGEMENT H/R                           | 5         |              |
| 380930   | GRIDFLEX10 HARDWARE KIT                            | 100       |              |
| 380940   | GF10 WIRE MANAGEMENT H/R, 17"                      | 5         |              |
| GFSPACE1 | GRIDFLEX SPACER TOOL KIT                           | 12        |              |

## RM5 BALLAST BAYS, WIND DEFLECTORS & CLAMP



**RM5 FLAT ROOF SYSTEM**

| P/N    | DESCRIPTION                | PACK SIZE | SHIP WT. LBS |
|--------|----------------------------|-----------|--------------|
| 310800 | RM5 BAY                    | 200       | 1435         |
| 310803 | RM5 BAY, PVC               | 200       | 1435         |
| 310810 | RM5 WIND DEFLECTOR, 84"    | 60        | 385          |
| 310811 | RM5 WIND DEFLECTOR, 98"    | 60        | 460          |
| 310820 | RM5/DT ENDCLAMP 30-40MM    | 20        | 5.5          |
| 310821 | RM5/DT ENDCLAMP 41-45MM    | 20        | 5.5          |
| 310822 | RM5/DT ENDCLAMP 46-50MM    | 20        | 5.5          |
| 310861 | RM5 WIND DEFLECTOR HDW KIT | 20        | 1            |

## RM5 ROOF FRICTION PATCH, ATTACHMENT & MID SUPPORT KIT

| P/N    | DESCRIPTION                    | PACK SIZE | SHIP WT. LBS |
|--------|--------------------------------|-----------|--------------|
| 310830 | RM5/DT PVC ROOF FRICTION PATCH | 500       | 10           |
| 310882 | RM5/DT H-ATTACHMENT KIT        | 1         | 6            |
| 310835 | RM5 MID SUPPORT KIT            | 20        | 1.002        |

## RM5 WIRE MANAGEMENT CLIPS

| P/N    | DESCRIPTION                 | PACK SIZE | SHIP WT. LBS |
|--------|-----------------------------|-----------|--------------|
| 310850 | RM5/DT WIRE MGMT CLIP       | 20        | 1            |
| 310851 | RM5 WD WIRE MGMT CLIP       | 20        | 1            |
| 310860 | RM5/DT 1/4-20 CLIP U-NUT SS | 20        | 1            |

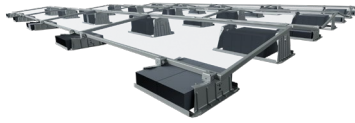
## RM5 MLPE MOUNTS, GROUNDING & BONDING HARDWARE

| P/N     | DESCRIPTION               | PACK SIZE | SHIP WT. LBS |
|---------|---------------------------|-----------|--------------|
| 008114M | MLPE MOUNT ASSY           | 10        | 1            |
| 008115M | MLPE TIGER CLIP           | 48        | 11           |
| 205000S | ENPHASE ENGAGE CABLE CLIP | 100       | 4            |
| 008002S | GROUND WEEBLUG #1         | 20        | 2            |
| 008009P | ILSCO LAY IN LUG          | 20        | 2            |

## FLASHLOC RM FLAT ROOF ATTACHMENT

| P/N    | DESCRIPTION | PACK SIZE | SHIP WT. LBS |
|--------|-------------|-----------|--------------|
| 310999 | FLASHLOC RM | 10        | 17           |

# RMDT (DUAL-TILT)



**RMDT FLAT ROOF SYSTEM**

## RMDT BALLAST BAYS & CLAMPS

| P/N    | DESCRIPTION           | PACK SIZE | SHIP WT. LBS |
|--------|-----------------------|-----------|--------------|
| 310801 | RMDT RIDGE BAY        | 150       | 1575         |
| 310802 | RMDT VALLEY BAY       | 200       | 1125         |
| 310804 | RMDT RIDGE BAY, PVC   | 150       | 1575         |
| 310805 | RMDT VALLEY BAY, PVC  | 200       | 1125         |
| 310823 | RMDT MIDCLAMP 46-50MM | 20        | 5.5          |
| 310824 | RMDT MIDCLAMP 41-45MM | 20        | 5.5          |
| 310825 | RMDT MIDCLAMP 36-40MM | 20        | 5.5          |
| 310826 | RMDT MIDCLAMP 32-35MM | 20        | 5.5          |

## RM5 ROOF FRICTION PATCH & ATTACHMENT KIT

| P/N    | DESCRIPTION                    | PACK SIZE | SHIP WT. LBS |
|--------|--------------------------------|-----------|--------------|
| 310830 | RM5/DT PVC ROOF FRICTION PATCH | 500       | 10           |
| 310882 | RM5/DT H-ATTACHMENT KIT        | 1         | 6            |

## RM5 WIRE MANAGEMENT CLIPS

| P/N    | DESCRIPTION                 | PACK SIZE | SHIP WT. LBS |
|--------|-----------------------------|-----------|--------------|
| 310850 | RM5/DT WIRE MGMT CLIP       | 20        | 1            |
| 310851 | RM5 WD WIRE MGMT CLIP       | 20        | 1            |
| 310860 | RM5/DT 1/4-20 CLIP U-NUT SS | 20        | 1            |

## RM5 MLPE MOUNTS, GROUNDING & BONDING HARDWARE

| P/N     | DESCRIPTION               | PACK SIZE | SHIP WT. LBS |
|---------|---------------------------|-----------|--------------|
| 008114M | MLPE MOUNT ASSY           | 10        | 1            |
| 008115M | MLPE TIGER CLIP           | 48        | 11           |
| 205000S | ENPHASE ENGAGE CABLE CLIP | 100       | 4            |
| 008002S | GROUND WEEBLUG #1         | 20        | 2            |
| 008009P | ILSCO LAY IN LUG          | 20        | 2            |

## FLASHLOC RM FLAT ROOF ATTACHMENT

| P/N    | DESCRIPTION | PACK SIZE | SHIP WT. LBS |
|--------|-------------|-----------|--------------|
| 310999 | FLASHLOC RM | 10        | 17           |





**ECOFOOT2+ FLAT ROOF SYSTEM**

**ECOFOOT2+ BASE, MID SUPPORT, WIND DEFLECTORS & CLAMPS**

| P/N      | DESCRIPTION                   | PACK SIZE | SHIP WT. LBS |
|----------|-------------------------------|-----------|--------------|
| ES10466  | ECOFOOT UNIVERSAL CLAMP KIT   | 48        | 51           |
| ES11203  | ECOFOOT2+ MID-SUPPORT KIT     | 48        | 33           |
| ES20142  | ECOFOOT2+ BASE W/ EPDM STRIPS | 300       | 1285         |
| ES20207  | ECOFOOT2+ BASE                | 300       | 1226         |
| ES20311A | ECOFOOT2+ 44" WIND DEFLECTOR  | 300       | 1525         |
| ES20311B | ECOFOOT2+ 70" WIND DEFLECTOR  | 300       | 1776         |
| ES20311C | ECOFOOT2+ 82" WIND DEFLECTOR  | 300       | 2014         |
| ES20311H | ECOFOOT2+ 86" WIND DEFLECTOR  | 300       | 2094         |
| ES20311I | ECOFOOT2+ 55" WIND DEFLECTOR  | 300       |              |
| ES20311K | ECOFOOT2+ 92" WIND DEFLECTOR  | 300       | 2260         |



**ECOFOOT2+ BAY**

**ECOFOOT2+ WIRE MANAGEMENT, MLPE MOUNTS, ACCESSORIES & BONDING HARDWARE**

| P/N     | DESCRIPTION                | PACK SIZE | SHIP WT. LBS |
|---------|----------------------------|-----------|--------------|
| ES10378 | ECOFOOT BONDING JUMPER 38" | 5         | 0.35         |
| ES10810 | ECOTRAY BASE, 6"           | 10        | 2.9          |
| ES10811 | ECOTRAY CAP 96"            | 10        | 3.9          |
| ES10812 | ECOTRAY TRAY, 96"          | 10        | 4.7          |
| ES10813 | ECOTRAY RIVET              | 100       | 4            |
| ES10970 | ECOFOOT MLPE BRACKET       | 48        | 19           |
| ES20548 | SPLICE CLEVIS 4 HOLES      | 10        |              |
| ES20913 | ECOMOUNT 1 INVERTER KIT    | 1         | 31           |
| ES20914 | ECOMOUNT 2 INVERTER KIT    | 1         | 53           |

**FLASHLOC RM FLAT ROOF ATTACHMENT**

| P/N    | DESCRIPTION | PACK SIZE | SHIP WT. LBS |
|--------|-------------|-----------|--------------|
| 310999 | FLASHLOC RM | 10        | 17           |

## ECOFOOT5D BASE, MID SUPPORT, WIND DEFLECTORS & CLAMPS



**ECOFOOT5D FLAT ROOF SYSTEM**

| P/N     | DESCRIPTION                     | PACK SIZE | SHIP WT. LBS |
|---------|---------------------------------|-----------|--------------|
| ES10466 | ECOFOOT UNIVERSAL CLAMP KIT     | 48        | 51           |
| ES10480 | ECOFOOT5D MID-SUPPORT KIT       | 24        | 25           |
| ES10486 | ECOFOOT5D 71" BALLAST TRAY      | 250       | 2013         |
| ES10488 | ECOFOOT5D 83" BALLAST TRAY      | 250       | 2346         |
| ES10490 | ECOFOOT5D BASE                  | 340       | 1945         |
| ES10494 | ECOFOOT5D 70" WIND DEFLECTOR    | 100       | 2027         |
| ES10496 | ECOFOOT5D 82" WIND DEFLECTOR    | 100       | 2391         |
| ES10843 | ECOFOOT ROOF TO STRUT HDWR KIT  | 24        | 17           |
| ES10844 | ECOFOOT STRUT TO MOD HDWR KIT   | 24        | 12           |
| ES10851 | ECOFOOT STRUT TO MOD KIT 30MM   | 24        | 11           |
| ES11023 | ECOFOOT5D 87" BALLAST TRAY      | 250       | 2475         |
| ES11024 | ECOFOOT5D 86" WIND DEFLECTOR    | 100       | 2515         |
| ES11025 | ECOFOOT5D 93.25" BALLAST TRAY   | 250       |              |
| ES11026 | ECOFOOT5D 92.25" WIND DEFLECTOR | 800       |              |
| ES20501 | B22 GALVANIZED STRUT 10'        | 1         | 16.1         |

## ECOFOOT5D WIRE MANAGEMENT, MLPE MOUNTS, ACCESSORIES & BONDING HARDWARE



**HEYCO SUNRUNNER 4-2U CLIP**

| P/N     | DESCRIPTION                    | PACK SIZE | SHIP WT. LBS |
|---------|--------------------------------|-----------|--------------|
| 008017S | HEYCO SUNRUNNER 2-S CLIP 100/B | 500       | 7            |
| 008018S | HEYCO SUNRUNNER 4-2U CLIP 100/ | 500       | 6            |
| 008019S | HEYCO SUNRUNNER CLIP 100/B     | 100       | 7            |
| 008020S | HEYCO SUNRUNNER 4 CLIP 100/B   | 100       | 7            |
| 008021S | SINGLE TRUNK CABLE CLIP        |           |              |
| ES10810 | ECOTRAY BASE, 6"               | 10        | 2.9          |
| ES10811 | ECOTRAY CAP 96"                | 10        | 3.9          |
| ES10812 | ECOTRAY TRAY, 96"              | 10        | 4.7          |
| ES10813 | ECOTRAY RIVET                  | 100       | 4            |
| ES20913 | ECOMOUNT 1 INVERTER KIT        | 1         | 31           |
| ES20914 | ECOMOUNT 2 INVERTER KIT        | 1         | 53           |
| ES10378 | ECOFOOT BONDING JUMPER 38"     | 5         | 0.35         |
| ES10970 | ECOFOOT MLPE BRACKET           | 48        | 19           |
| 008114M | ECOFOOT MLPE BRACKET           | 10        | 1            |
| 008115M | MLPE TIGER CLIP                | 48        | 11           |

## FLASHLOC RM FLAT ROOF ATTACHMENT

| P/N    | DESCRIPTION | PACK SIZE | SHIP WT. LBS |
|--------|-------------|-----------|--------------|
| 310999 | FLASHLOC RM | 10        | 17           |



**GROUND FIXED TILT (GFT)**

## GFT C-PILES

| P/N    | DESCRIPTION       | PACK SIZE | SHIP WT. LBS |
|--------|-------------------|-----------|--------------|
| 404001 | GFT C-PILE, 12.5' | 30        | 2400         |
| 404002 | GFT C-PILE, 15'   | 30        | 2910         |
| 404004 | GFT C-PILE, 10.5' | 30        | 2016         |

## GFT RAIL & SPLICE

| P/N     | DESCRIPTION         | PACK SIZE | SHIP WT. LBS |
|---------|---------------------|-----------|--------------|
| 404014  | GFT RAIL SPLICE KIT | 60        | 180          |
| 411168M | GFT RAIL 168" MILL  | 60        | 850          |
| 411246M | GFT RAIL 246" MILL  | 60        | 1200         |

## GFT TOP CHORDS & BRACES FOR SHARED RAIL DESIGNS

| P/N    | DESCRIPTION                        | PACK SIZE | SHIP WT. LBS |
|--------|------------------------------------|-----------|--------------|
| 404013 | GFT ASSEMBLY HARDWARE 4-RAIL KIT   | 30        | 90           |
| 404031 | GFT DIAGONAL BRACE ASSEMBLY 20D SR | 30        | 630          |
| 404032 | GFT DIAGONAL BRACE ASSEMBLY 30D SR | 30        | 750          |
| 404034 | GFT ASSEMBLY HARDWARE 3-RAIL KIT   | 30        | 90           |
| 404037 | GFT TOP CHORD CHANNEL 20/30, LGFMT | 30        |              |

## GFT WIRE MANAGEMENT CLIPS & ACCESSORIES

| P/N     | DESCRIPTION                       | PACK SIZE | SHIP WT. LBS |
|---------|-----------------------------------|-----------|--------------|
| 404015  | GFT WIRE MANAGEMENT CLIP          | 100       | 5            |
| 404020  | GFT RAIL SUPPLEMENTAL HDWR 4-RAIL | 1         | 3            |
| GFT-CAP | GFT RAIL END CAP, UV-BLK          | 100       | 3.3          |

# UNIRAC LARGE ARRAY



UNIRAC LARGE ARRAY

## ULA COMPONENTS FOR 2-INCH SCHEDULE 40/80 PIPE

| P/N     | DESCRIPTION             | PACK SIZE | SHIP WT. LBS |
|---------|-------------------------|-----------|--------------|
| 403200C | ULA BRACE, 2"@ 7 FT,    | 1         | 10           |
| 403201C | ULA BRACE, 2"@ 10.5 FT, | 1         | 16           |
| 403202C | ULA BRACE, 2"@ 14 FT,   | 1         | 21           |
| 403211C | ULA FRONT CAP, 2", AL   | 1         | 2            |
| 403214C | ULA REAR CAP, 2", AL    | 1         | 2            |
| 403215C | ULA SLIDER, 2", AL      | 1         | 1            |
| 403216M | ULA RAIL BRACKET        | 1         |              |

## ULA RAILS

| P/N     | DESCRIPTION       | PACK SIZE | SHIP WT. LBS |
|---------|-------------------|-----------|--------------|
| 310132C | SM RAIL 132" CLR  | 144       | 1188         |
| 320132M | SM RAIL 132" MILL | 144       | 1188         |
| 310168C | SM RAIL 168" CLR  | 144       | 1512         |
| 320168M | SM RAIL 168" MILL | 144       | 1512         |
| 310168D | SM RAIL 168" DRK  | 144       | 1512         |
| 320185M | SM RAIL 185" MILL | 144       | 1665         |
| 310185D | SM RAIL 185" DRK  | 144       | 1665         |
| 310246C | SM RAIL 246" CLR  | 144       | 2214         |
| 320246M | SM RAIL 246" MILL | 144       | 2214         |
| 310246D | SM RAIL 246" DRK  | 144       | 2214         |

## ULA ATTACHMENT FOR CONCRETE SLAB OR FOOTING

| P/N     | DESCRIPTION                | PACK SIZE | SHIP WT. LBS |
|---------|----------------------------|-----------|--------------|
| 403216S | ULA THREADED FOOT, 2", STL | 1         | 2            |



**SOLOBOX RAIL**



**U-GUARD CLIP**



**CONDUIT MOUNT BUTYL**



**MLPE MOUNT**

## SOLOBOX JUNCTION BOX

| P/N        | DESCRIPTION              | PACK SIZE | SHIP WT. LBS |
|------------|--------------------------|-----------|--------------|
| SBOXRAIL-D | SOLOBOX RAIL W/ DIN RL   | 4         |              |
| SBOXCOMP-D | SOLOBOX COMP W/ DIN RAIL | 8         |              |

## UGARD

| P/N       | DESCRIPTION       | PACK SIZE | SHIP WT. LBS |
|-----------|-------------------|-----------|--------------|
| GUARD-M5  | GUARDIAN MESH 5IN | 100FT     |              |
| GUARD-M6  | GUARDIAN MESH 6IN | 100FT     |              |
| GUARD-M8  | GUARDIAN MESH 8IN | 100FT     |              |
| GUARD-CLP | GUARDIAN CLIP     | 20        |              |

## E-BOSS CONDUIT MOUNTS

| P/N     | DESCRIPTION                    | PACK SIZE | SHIP WT. LBS |
|---------|--------------------------------|-----------|--------------|
| CMBTLM1 | E-BOSS COND MT 3.0 W/ BUTL KIT | 20        |              |
| 00823CM | E-BOSS TILE CONDUIT MT KIT     | 10        |              |
| 00822CM | E-BOSS CONDUIT MT 2.0 COMP KIT | 10        | 5            |

## MLPE MOUNTS

| P/N     | DESCRIPTION     | PACK SIZE | SHIP WT. LBS |
|---------|-----------------|-----------|--------------|
| 008114M | MLPE MOUNT ASSY | 10        | 1            |
| 008115M | MLPE TIGER CLIP | 48        | 11           |



**ILSCO LAY IN LUG**

### GROUNDING & BONDING HARDWARE

| P/N     | DESCRIPTION       | PACK SIZE | SHIP WT. LBS |
|---------|-------------------|-----------|--------------|
| 008002S | GROUND WEEBLUG #1 | 20        | 2            |
| 008009P | ILSCO LAY IN LUG  | 20        | 2            |
| 008015S | WIRE BND CLIP     | 10        | 1            |



**HEYCO SUNRUNNER 4-2U CLIP**

### WIRE MANAGEMENT CLIPS

| P/N     | DESCRIPTION                     | PACK SIZE | SHIP WT. LBS |
|---------|---------------------------------|-----------|--------------|
| 008003S | ONE WIRE CLIP, SS, DCS 1306     | 500       | 3            |
| 008004S | TWO WIRE CLIP, SS, DCS 1307     | 500       | 3            |
| 008017S | HEYCO SUNRUNNER 2-S CLIP 100/B  | 500       | 7            |
| 008018S | HEYCO SUNRUNNER 4-2U CLIP 100/B | 500       | 6            |
| 008019S | HEYCO SUNRUNNER CLIP 100/B      | 100       | 7            |
| 008020S | HEYCO SUNRUNNER 4 CLIP 100/B    | 100       | 7            |



**SM TRIM**

### SOLARMOUNT TRIM

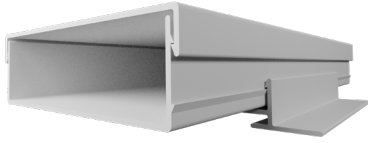
| P/N       | DESCRIPTION          | PACK SIZE | SHIP WT. LBS |
|-----------|----------------------|-----------|--------------|
| 008025S   | SM TRIM END CLIP     | 10        | 0.1          |
| 206072D-B | SM TRIM 168" DRK 8PK | 8         | 75.28        |



**RAIL TRAY**

### E-BOSS SOLARTRAY WIRE MANAGEMENT

| P/N     | DESCRIPTION         | PACK SIZE | SHIP WT. LBS |
|---------|---------------------|-----------|--------------|
| 00802BT | E-BOSS BRIDGE TRAY  | 20        | 11           |
| 00802RT | E-BOSS RAIL TRAY    | 40        | 18           |
| 00802BC | E-BOSS BRIDGE CLIPS | 200       | 2            |



**ECOTRAY WIRE  
MANAGEMENT**

## **EBOSS ECOTRAY**

| <b>P/N</b> | <b>DESCRIPTION</b> | <b>PACK SIZE</b> | <b>SHIP WT. LBS</b> |
|------------|--------------------|------------------|---------------------|
| ES10810    | ECOTRAY BASE, 6"   | 10               | 2.9                 |
| ES10811    | ECOTRAY CAP 96"    | 10               | 3.9                 |
| ES10812    | ECOTRAY TRAY, 96"  | 10               | 4.7                 |
| ES10813    | ECOTRAY RIVET      | 100              | 4                   |