

UNIVERSAL AF™



MORE THAN JUST UNIVERSAL

- Self standing, twist-and-lock install.
- Guaranteed T-bolt engagement.
- 1 - Tool installation.
- Integrated bonding mid and end clamps.

SLEEK AESTHETICS

- Low profile hardware.
- ½” module gap.
- Clamp and rail end caps provide a refined finish.
- Rail endcaps available for refined finish.

UNIVERSAL MID CLAMP

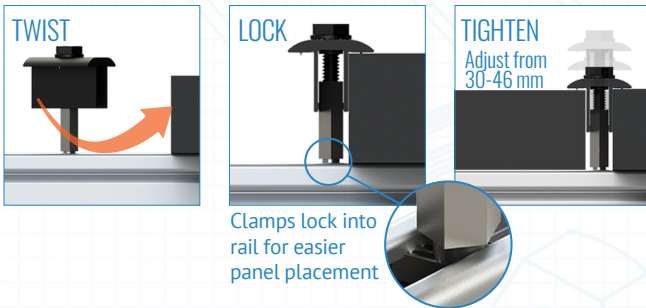


UNIVERSAL END CLAMP



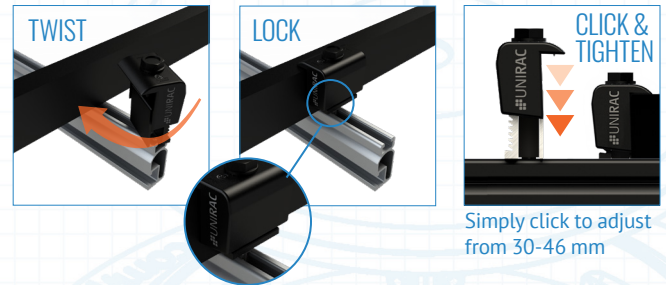
MID-CLAMP

TWIST AND LOCK ENGAGEMENT FEATURE



END-CLAMP

TWIST AND LOCK ENGAGEMENT FEATURE



WHY UNIVERSAL AF™ ?

Ditch the spacers! The Universal Aesthetic Fastener (Universal AF™) accommodates every module between 30 mm and 46 mm without extra spacers, while providing the fast intuitive install experience that installers require, and a refined aesthetic homeowners will love.