

# UNIRAC LARGE ARRAY™



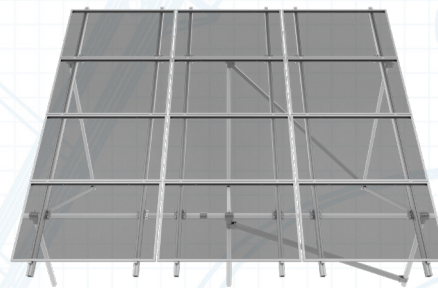
## MODULAR DESIGN & FLEXIBILITY

- Comes in 2" and 3" pipe versions.
- Combine with Unirac's ground screw ecosystem partners for maximum site condition flexibility.
- Supports a wide range project challenges. Aluminum components merge with SOLARMOUNT® or GFT rails and installer-supplied Schedule 40 or 80 steel pipe (available anywhere) to create a durable structure that can accommodate uneven, rocky or sloping terrain.
- Unirac Large Array is capable of withstanding and seismic conditions. or extreme wind or snow loads.
- Increase your leading edge height or optimize your tilt angle to clear ground obstructions.

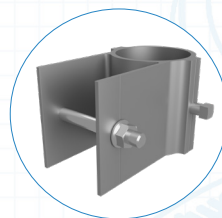


## AVAILABILITY

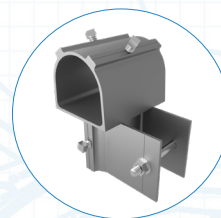
- Unirac maintains the largest network of stocking distributors for our racking solutions. Our partners have distinguished their level of customer support, availability, and overall value, thereby providing the highest level of service to users of Unirac products.
- Count on our partners for fast and accurate delivery to meet your project needs. Visit [Unirac.com](http://Unirac.com) for a list of distributors.



UNIRAC LARGE ARRAY BRACE



SLIDER



FRONT CAP



RAIL BRACKET

## ABOUT PRODUCT

UNIRAC LARGE ARRAY™ will support a wider range of site and climatic challenges than any other PV structure on the market. ULA aluminum components merge with SOLARMOUNT® and GFT rails and installer-supplied steel pipe to form durable, rigid truss structures that can accommodate uneven, rocky, or sloping terrain. Modular design and project flexibility is only limited by the size of the ground site.