

SOLOBOX[®] COMP

THE ULTIMATE JUNCTION EXPERIENCE

Simplifies rooftop junction box installation with integrated flashing and butyl sealing. Designed for fast, clean, and fully weatherproof installations.

UNIRAC[®]
BETTER SOLAR STARTS HERE

SOLOBOX[®] COMP
SBOXCOMP-D

INTEGRATED FLASHING

- Protects the roof from day one.
- Integrated flashing preserves roof integrity by creating a reliable, watertight penetration without additional components or installation steps.
- Engineered with Unirac's SHED & SEAL[®] Technology, the flashing redirects water away from penetration points to reinforce long-term waterproofing.

BUILT-IN BUTYL SEAL

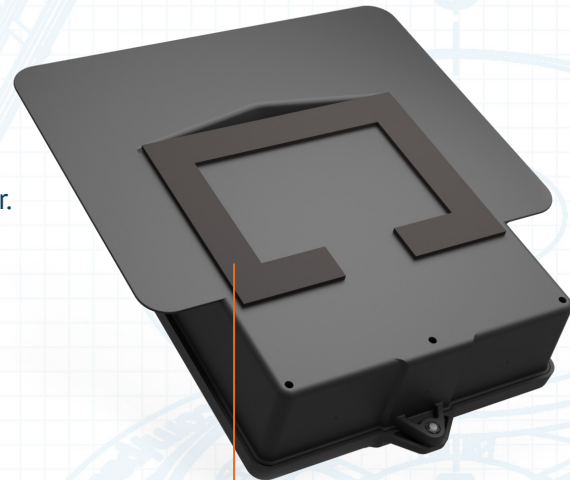
- No sealant. No mess. No guesswork.
- SOLOBOX[®] COMP features industry-first pre-applied butyl sealing that creates an instant watertight barrier during installation.

LARGE BOX

- More space where installers need it.
- Generous internal working space provides ample room for wire management and connections, helping crews work faster.
- Integrated Din Rail and Ground Bar supports multiple conductors and fittings.
- Manufactured from high-strength Noryl resin, withstands harsh environmental conditions while protecting electrical connections.

EASY ACCESS

- Install and service in seconds.
- A hinged, removeable lid with single-screw closure allows fast installation and maintenance without removing components. The lid stays attached during installation, minimizing dropped hardware and improving rooftop safety.



Enhanced waterproofing with integrated
Flashing and Butyl

EACH KIT INCLUDES:

- Pre-installed Din Rail & Ground Bar
- FOUR (4) Decking Screws
- ONE (1) Shingle Cut Template

FOR QUESTIONS OR CUSTOMER SERVICE CONTACT:
505-242-6411 | SALES@UNIRAC.COM | WWW.UNIRAC.COM
PUB2026MAR11-V1

CONFORMS TO
UL1741

ISO 9001:2015
14001:2015
CERTIFIED



SPECIFICATIONS & RATINGS

PRODUCT CERTIFICATIONS	UL1741
ENCLOSURE RATING	NEMA Type 3R
MAX VOLTAGE	1,000V
MAX CURRENT	120A
BOX DIMENSIONS	8.4" x 8.6" x 2.7" (195 cubic inches)
ROOF SLOPE RANGE	1:12 – 12:12
MAX SIZE WALL FITTING SIZE	1"
MAX ATTIC PASS-THROUGH FITTINGS	3
ATTIC PASS-THROUGH FITTING SIZE RANGE	½" - 1"
AMBIENT OPERATING CONDITIONS	-35°C to 75°C
ALLOWABLE WIRE	Inputs: 14 AWG – 6 AWG Outputs: 14 AWG – 6 AWG Ground: 14 AWG – 6 AWG
WIRE CONNECTORS REQUIREMENT	UL486C or UL486D Listed wire connectors for wire gauge 14 AWG to 6 AWG.

Technical specifications may change as Unirac strives to always stay ahead with the latest certifications. Please refer to the technical documentations on: www.unirac.com for the most up-to-date information.