

# SOLARMOUNT®

## STANDARD RAIL-BASED RACKING SYSTEM FOR RESIDENTIAL AND COMMERCIAL INSTALLATIONS

**UNIRAC®**  
BETTER SOLAR STARTS HERE

### STREAMLINED INSTALLATION

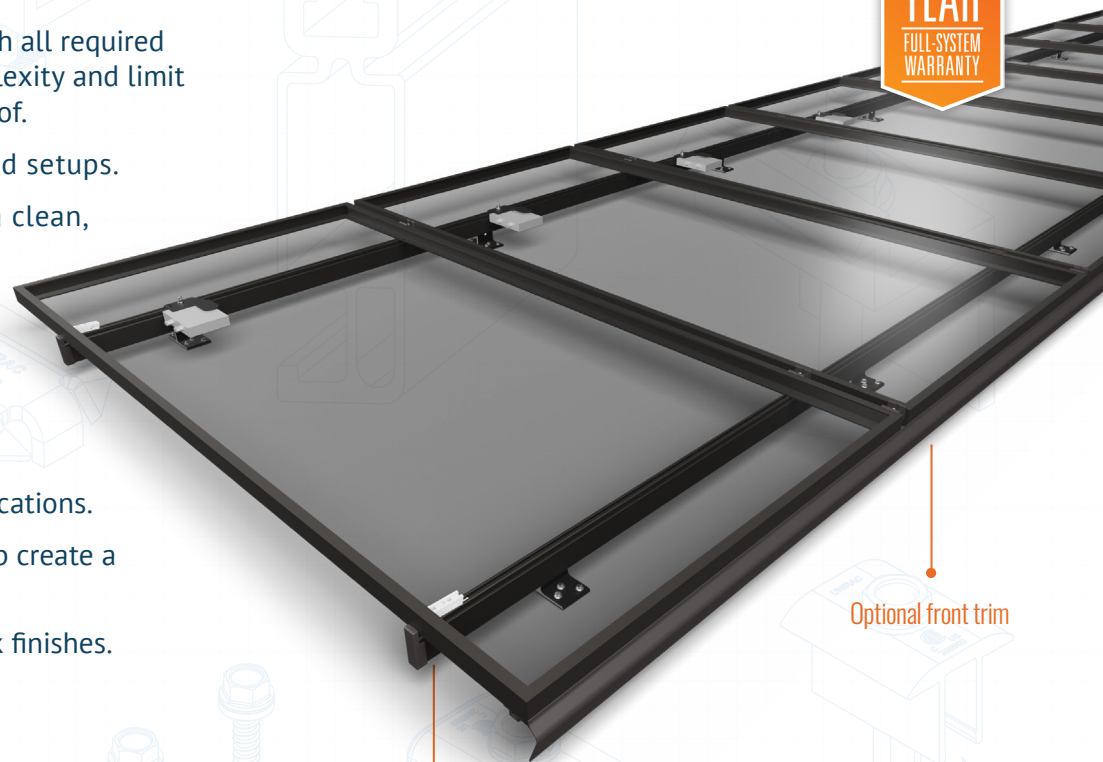
- Mid and End Clamp options to fit 30–51mm modules.
- Attachments are packaged with all required hardware to reduce SKU complexity and limit the number of boxes on the roof.
- Works with tilt legs for angled setups.
- Optional front trim delivers a clean, finished look.

### SMART, INTEGRATED DESIGN

- Meets the UL2703 standard.
- UL 3741 compliant system for residential & commercial applications.
- End caps and hidden end clamp create a clean, streamlined appearance.
- Parts available in Mill and Dark finishes.

### MAXIMUM VERSATILITY

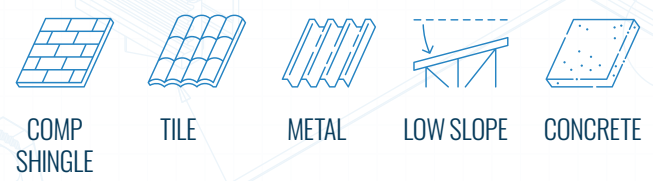
- Two rail profiles meet structural and span needs.
- Multiple clamp styles to match aesthetic and installation preferences.
- Cross-compatible with a variety of Unirac attachments for flexible designs.



Optional front trim

Two rail profiles for light and standard applications

WORKS ON:



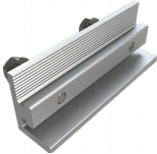
## STANDARD RAIL-BASED RACKING SYSTEM FOR RESIDENTIAL AND COMMERCIAL INSTALLATIONS

### RAILS



#### LIGHT AND STANDARD PROFILE

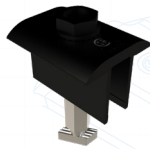
The Light Rail offers a sleek, low-profile option with spans up to 7 feet, while the Standard Rail delivers robust performance for higher wind and snow conditions with spans up to 10 feet.



#### SPLICE

Joins and aligns rail sections while providing reliable electrical bonding. Forms a 4" rigid joint using pre-assembled bonding hardware.

### CLAMPS



#### UNIVERSAL AF MID CLAMP

Offers a self-standing, twist-and-lock installation. Accommodates modules 30-46mm.



#### UNIVERSAL AF END CLAMP

Provides an aesthetic end clamp along with a twist-and-lock design for quick engagement. Supports module frame heights from 30-46mm.



#### STANDARD MID CLAMP

Offers the smallest module gap at 1/4". SKUs available to accommodate modules 30-51mm.



#### STANDARD END CLAMP

Features a built-in washer that keeps the clamp and bolt upright for easy installation.



#### THE PRO SERIES HIDDEN END CLAMP

A hidden clamp delivers the cleanest aesthetic. This preassembled clamp secures the module to the rail at the flange and sits flush with the module edge.

### ATTACHMENTS



#### SOLARMOUNT® BUTYL

The go-to attachment for comp shingle roofs, offering fast, reliable performance with the SOLARMOUNT® system. No flashings needed, the pre-applied butyl pad makes installation simple: peel, place, and fasten. **Product is approved for High Velocity Hurricane Zone of the Florida Building Code. NOA No. 24-0621.03.**

### OTHERS



#### E-BOSS AND ACCESSORIES

A full range of E-BOSS accessories supports wire management, bonding, and grounding needs. This includes the new U-LUG, pre-assembled with a single bolt for faster, easier wire engagement. Optional adjustable tilt legs to accommodate tilt angles from 10° to 30° for added flexibility in system design.