



BETTER
SOLAR
STARTS
HERE

PRODUCT
CATALOG
2026-02

CATALOG NAVIGATION

STEP 1

CHOOSE YOUR APPLICATION TYPE

STEP 2

EXPLORE OUR SOLUTIONS

STEP 3

VIEW OUR COMPLETE SELECTION OF ROOF ATTACHMENTS AND E-BOSS ACCESSORIES

ICONS KEY

-  DARK BRONZE ANODIZED
-  MILL FINISH ALUMINUM
-  STAINLESS STEEL
-  DOMESTIC SOLUTION
-  IDEAL FOR RESIDENTIAL ROOFS
-  IDEAL FOR COMMERCIAL ROOFS

TABLE OF CONTENTS

1. PITCHED ROOF

- NXT UMOUNT® | OPEN CHANNEL RAIL-BASED MOUNTING SYSTEM 4
- SOLARMOUNT® | RAIL-BASED MOUNTING SYSTEM 8
- SFM INFINITY™ | RAIL-LESS MOUNTING SYSTEM 14
- METAL X® | METAL ROOF RAIL-LESS MOUNTING SYSTEM 18

2. FLAT ROOF

- RM10 EVO™ | SOUTH FACING 10 DEGREE TILT MOUNTING SYSTEM 22
- GRIDFLEX® 5D | 5 DEGREE GRID-BASED FLAT ROOF SYSTEM 24
- GRIDFLEX® 10D | 10 DEGREE GRID-BASED FLAT ROOF SYSTEM 26
- RM5™ | SOUTH FACING 5 DEGREE TILT MOUNTING SYSTEM 30
- RMDT™ | 8 DEGREE EAST-WEST TILT MOUNTING SYSTEM 34
- ECOFOOT® 5D | HIGH DENSITY 5 DEGREE MOUNTING SYSTEM 36
- ECOFOOT® 2+ | UNIVERSAL BALLASTED MOUNTING SYSTEM 38

3. GROUND MOUNT

- GROUND FIXED TILT™ (GFT) | GROUND MOUNT SYSTEM 42
- UNIRAC LARGE ARRAY™ | GROUND MOUNT SYSTEM 44

4. ATTACHMENTS

- SOLARMOUNT® BUTYL 48
- STRONGHOLD™ BUTYL 49
- NXT UMOUNT® ADJUSTABLE TILT LEGS 50
- SOLARMOUNT® ADJUSTABLE TILT LEGS 51
- FLASHLOC® 52
- FLASHKIT PRO® AND SB 53
- UNIRAC STANDOFF 54
- L-FEET 55
- FLASHKIT TILE 56
- SOLARHOOKS™ 57
- FLASHLOC® CONCRETE ANCHOR 58
- FLASHLOC® RM 59

5. E-BOSS ELECTRICAL ACCESSORIES

- SOLOBOX® JUNCTION BOX 62
- E-BOSS CONDUIT MOUNTS 64
- GUARDIAN™ 65
- MLPE, SM TRIM, RAY TRAY, WIRE MANAGEMENT 66
- E-BOSS, RAYTRAY, GROUNDING AND BONDING HARDWARE 67
- ECOFOOT®, WIRE MANAGEMENT CLIPS 68

NXT UMOUNT®

FEATURES

- CLICK-IN RAILS & CLAMPS
- OPEN CHANNEL RAIL FOR SEAMLESS WIRE MANAGEMENT
- TRULY STRUCTURAL SPLICE
- FOR USE ON COMP SHINGLE, TILE, AND METAL ROOFS



CONFORMS TO
UL 3741

CONFORMS TO
UL 2703



APPLICATION

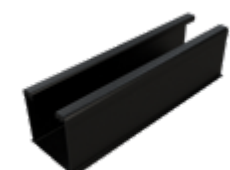


SCAN TO SEE
PRODUCT BROCHURE

NXT UMOUNT® is UNIRAC's premier open-channel rail system that stands as the ultimate testament to over two decades of engineering experience. Its thoughtful design, backed by rigorous engineering, world-class support, and a reliable supply chain, encapsulates the best of DESIGN, SIMPLICITY, and VALUE.



RAILS



NXT UMOUNT® - RAILS ⚠️ WHILE SUPPLIES LAST

PART NUMBER	DESCRIPTION	PACK SIZE	PRICE*	COLOR
168RLD1	NXT UMOUNT RAIL - 168" DARK	168	\$37.49	DARK MILL
185RLD1	NXT UMOUNT RAIL - 185" DARK	168	\$60.34	
185RLM1	NXT UMOUNT RAIL - 185" MILL	168	\$43.49	
096RLD1	NXT UMOUNT RAIL - 96" DARK	168	\$32.22	
096RLM1	NXT UMOUNT RAIL - 96" MILL	168	\$23.96	
084RLM1	NXT UMOUNT RAIL - 84" MILL	168	\$14.95	
NEW 171RLD1	NXT UMOUNT RAIL - 171.5" DARK	-	\$52.25	DARK MILL
NEW 171RLM1	NXT UMOUNT RAIL - 171.5" MILL	-	\$41.92	

SPLICES



NXT UMOUNT® - SPLICE AND HD RAIL SPLICE

RLSPLCM2	NXT UMOUNT RAIL SPLICE	20	\$8.18	MILL
NEW NUHDSPLC-US	NXT UMOUNT HD RAIL SPLICE	20	\$11.50	

MODULE CLAMPS



NXT UMOUNT® - COMBO CLAMP

CCLAMPD1	NXT UMOUNT COMBO CLAMP - DARK	20	\$6.09	DARK MILL
CCLAMPM1	NXT UMOUNT COMBO CLAMP - MILL	20	\$5.51	



NXT UMOUNT® - HIDDEN END CLAMP

NUHECLMP1	NXT HIDDEN END CLAMP W/ CAP	4	\$7.76	MILL
-----------	-----------------------------	---	--------	------

ATTACHMENTS



NXT UMOUNT® - STRONGHOLD RAIL CLAMP

SHCLMPD2	STRONGHOLD RAIL CLAMP DARK	20	\$3.78	DARK MILL
SHCLMPM2	STRONGHOLD RAIL CLAMP MILL	20	\$3.63	



NXT UMOUNT® - METAL ROOF RAIL CLAMP

NUMTLCLMPD	NXT METAL ROOF RAIL CLAMP DARK	20	\$3.66	DARK MILL
NUMTLCLMPM	NXT METAL ROOF RAIL CLAMP MILL	20	\$3.54	



NXT UMOUNT® - STRONGHOLD™ BUTYL GO TO PAGE 49 FOR MORE INFO

SHBUTYLD2	STRONGHOLD BUTYL ATT KIT #14S DARK	20	\$13.93	DARK MILL
SHBUTYLM2	STRONGHOLD BUTYL ATT KIT #14S MILL	20	\$12.36	

KIT INCLUDES - ONE (1) Butyl Attachment / - ONE (1) NXT Rail Clamp
- TWO (2) #14 Screws with Sealing Washer for Rafter Mounting

ATTACHMENTS



NXT UMount® - STRONGHOLD™ ATTACHMENT KIT

PART NUMBER	DESCRIPTION	PACK SIZE	PRICE*	COLOR
SHCPKTD1	STRONGHOLD ATT KIT COMP DRK	20	\$9.60	
SHCPKTM1	STRONGHOLD ATT KIT COMP MILL	20	\$8.47	DARK MILL
KIT INCLUDES	- ONE (1) Stronghold Comp Attachment - ONE (1) NXT Rail Clamp - ONE (1) 5/16 Lag Bolt with Sealing Washer - Tube Sealant			

UTILIZING THE NXT RAIL CLAMP, THE NXT SYSTEM IS COMPATIBLE WITH ALL OF OUR ATTACHMENTS - SEE PAGES 46 TO 59

ACCESSORIES



NXT UMount® - RAIL CAP

ENDCAPD1	NXT UMount RL & CLMP CAP KIT	20	\$1.40	DARK
----------	------------------------------	----	--------	-------------

NXT UMount® - RAIL END CAP

NEW NUENDCAPKIT	NXT END CAP KIT	20	\$1.33	DARK
------------------------	-----------------	----	--------	-------------

NXT UMount® - HD RAIL END CAP

NEW NUHDCAPKIT	NXT UMount HD RAIL END CAP KIT	20	\$1.68	DARK
NEW NUHDENDCAPKIT	NXT HD END CAP KIT	-	\$1.68	

NXT UMount® - MLPE AND GROUND LUG

NULGMLP1	NXT MLPE & GND LUG CLAMP	200	\$4.01	MILL
----------	--------------------------	-----	--------	-------------

NXT UMount® - MLPE WIRE MANAGEMENT

WRMCLPD1	NXT UMount WIRE MGMT CLIP	20	\$0.46	MILL
WRMCNSD1	NXT UMount NS WIRE MGMT CLIP	20	\$5.34	

ADDITIONAL COMPONENTS FOR NXT UMount®

ATTACHMENTS

NXT UMount® - STRONGHOLD™ BUTYL	48
NXT UMount® - ADJUSTABLE TILT LEGS	50
FLASHLOC®	52
FLASHKIT PRO AND SWITCHBLADE (SB)	53
UNIRAC STANDOFF	54
UNIRAC L-FEET	55
FLASHKIT TILE REPLACEMENT	56
SOLARHOOKS	57
FLASHLOC® CONCRETE ANCHOR	58

E-BOSS

SOLOBOX® COMP	62
SOLOBOX® RAIL	63
CONDUIT MOUNT BUTYL	64
TILE CONDUIT MOUNT	64



NXT UMount® - DOMESTIC CONTENT SOLUTIONS

RAIL



NXT UMount® - RAIL

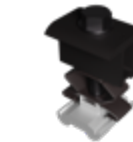
PART NUMBER	DESCRIPTION	PACK SIZE	PRICE*	COLOR
084RLM1-US	NXT UMount RAIL - 84" MILL	168	\$18.25	
096RLD1-US	NXT UMount RAIL - 96" DARK	168	\$34.87	
096RLM1-US	NXT UMount RAIL - 96" MILL	168	\$23.96	
185RLD1-US	NXT UMount RAIL - 185" DARK	168	\$67.19	
185RLM1-US	NXT UMount RAIL - 185" MILL	168	\$43.49	DARK MILL
NEW 171RLD1-US	NXT UMount RAIL - 171.5" DARK	168	\$61.21	
NEW 171RLM1-US	NXT UMount RAIL - 171.5" MILL	168	\$41.92	
185NUHDM-US	NXT UMount HD RAIL 185" MILL	-	\$56.31	
246NUHDM-US	NXT UMount HD RAIL 246" MILL	-	\$74.84	

STRUCTURAL FASTENERS



NXT UMount® - SPLICES

RLSPLCM2-US	NXT UMount RAIL SPLICE	20	\$10.98	MILL
NUHDSPLC-US	NXT UMount HD RAIL SPLICE	20	\$11.50	



NXT UMount® - COMBO CLAMP

CCLAMPD1-US	NXT UMount COMBO CLAMP - DARK	20	\$6.55	DARK
NEW NUCCLAMPD2-US	NXT UMount US COMBO CLAMP DRK	-	\$5.80	



NXT UMount® - UNIVERSAL MLPE MOUNT

MLPEMNT-US	UNIVERSAL MLPE MOUNT	10	\$3.70	MILL
NULGMLP1-US	NXT US MLPE & GND LUG CLAMP	200	\$4.13	

ATTACHMENTS



NXT UMount® - STRONGHOLD™ BUTYL ⚠️ WHILE SUPPLIES LAST

SHBUTYLD2-US	STRONGHOLD BUTYL ATT KIT #14S DARK	20	\$14.42	
SHBUTYLM2-US	STRONGHOLD BUTYL ATT KIT #14S MILL	20	\$13.46	DARK MILL
⚠️ XTRABUTL-SH-US	EXTRA BUTYL PAD-SH, KIT	30	\$2.21	



NXT UMount® - STRONGHOLD RAIL CLAMP

SHCLMPD2-US	STRONGHOLD RAIL CLAMP DARK	20	\$ 5.63	DARK MILL
SHCLMPM2-US	STRONGHOLD RAIL CLAMP MILL	20	\$ 4.46	



NXT UMount® - METAL ROOF RAIL CLAMP

NUMTLCLMPD-US	NXT METAL ROOF RAIL CLAMP DARK	20	\$7.85	DARK MILL
NUMTLCLMPM-US	NXT METAL ROOF RAIL CLAMP MILL	20	\$5.00	

ADDITIONAL NXT UMount® DOMESTIC CONTENT COMPONENTS

NXT UMount® ADJUSTABLE TILT LEGS	50
STANDOFF US	54
UNIRAC L-FEET	55

SOLARMOUNT®

FEATURES

- MULTIPLE CLAMP STYLES FOR A VARIETY OF AESTHETIC NEEDS
- TWO RAIL PROFILES TO MEET STRUCTURAL & SPAN NEEDS
- FOR USE ON COMP SHINGLE, TILE & METAL ROOFS

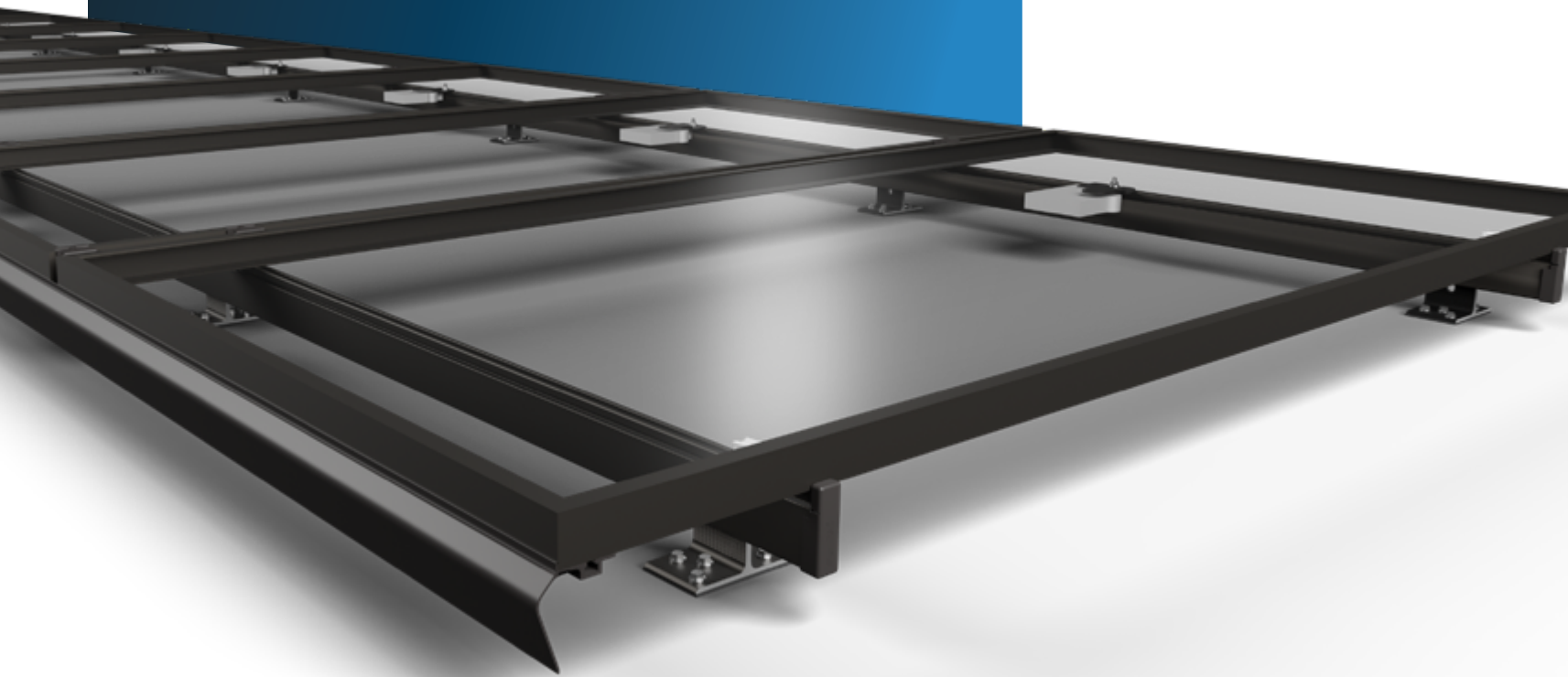


CONFORMS TO
UL 3741

CONFORMS TO
UL 2703



APPLICATION



SCAN TO SEE
PRODUCT BROCHURE

SOLARMOUNT® is the professionals' choice for residential PV mounting applications. Every aspect of the system is designed for an easier, faster installation experience.

SOLARMOUNT® is a complete solution with universal clamps, tons of attachment options, full system UL 2703 certification, and 25-year warranty. Sleek rails for both light and heavy duty applications, with optional trim, make for a reliable, cost-effective, great looking racking solution.

RAIL



SOLARMOUNT® - **LIGHT RAIL** Ⓞ WHILE SUPPLIES LAST

PART NUMBER	DESCRIPTION	PACK SIZE	PRICE*	COLOR
Ⓞ 315168M	SM LIGHT RAIL 168" MILL	144	\$36.46	
315185D	SM LIGHT RAIL 185" DRK	144	\$74.60	DARK
315185M	SM LIGHT RAIL 185" MILL	144	\$59.51	MILL
315246D	SM LIGHT RAIL 246" DRK	144	\$99.23	
315246M	SM LIGHT RAIL 246" MILL	144	\$75.26	

SPLICE & CAP



SOLARMOUNT® - **STANDARD RAIL** Ⓞ WHILE SUPPLIES LAST

Ⓞ 310132C	SM RAIL 132" CLR	144	\$56.10	
Ⓞ 310168C	SM RAIL 168" CLR	144	\$71.40	
Ⓞ 310168D	SM RAIL 168" DRK	144	\$79.82	
Ⓞ 310246C	SM RAIL 246" CLR	144	\$104.55	
310246D	SM RAIL 246" DRK	144	\$143.87	DARK
320246M	SM RAIL 246" MILL	144	\$110.44	MILL
310185D	SM RAIL 185" DRK	144	\$108.24	
320185M	SM RAIL 185" MILL	144	\$84.31	

SOLARMOUNT® - **RAIL SPLICE AND RAIL CAP**

303019D	BND SPLICE BAR PRO SERIES DRK	20	\$9.07	DARK
303019M	BND SPLICE BAR PRO SERIES MILL	20	\$8.74	MILL
309003P	SM RAIL END CAP, PRO UV-BLK	100	\$1.20	

MODULE CLAMPS



SOLARMOUNT® - **STANDARD CLAMPS** Ⓞ WHILE SUPPLIES LAST

302021C	SM ENDCLAMP B MLL AL	20	\$3.55	
302021D	SM ENDCLAMP B DRK AL	20	\$4.40	
302022C	SM ENDCLAMP C MLL AL	20	\$3.70	
302022D	SM ENDCLAMP C DRK AL	20	\$4.47	
302023C	SM ENDCLAMP D MLL AL	20	\$3.91	
302023D	SM ENDCLAMP D DRK AL	20	\$4.84	
302024C	SM ENDCLAMP E MLL AL	20	\$4.24	
Ⓞ 302024D	SM ENDCLAMP E DRK AL	20	\$5.27	
302025C	SM ENDCLAMP F MLL AL	20	\$4.04	DARK
Ⓞ 302025D	SM ENDCLAMP F DRK AL	20	\$5.02	SS
302026C	SM ENDCLAMP K MLL AL	20	\$3.81	
Ⓞ 302026D	SM ENDCLAMP K DRK AL	20	\$4.74	
302027D	SM BND MIDCLAMP BC DRK SS	20	\$4.46	
302027C	SM BND MIDCLAMP BC SS	20	\$3.63	
302029D	SM BND MIDCLAMP DK DRK SS	20	\$4.35	
302029C	SM BND MIDCLAMP DK SS	20	\$3.79	
Ⓞ 302028D	SM BND MIDCLAMP EF DRK SS	20	\$4.25	
Ⓞ 302028C	SM BND MIDCLAMP EF SS	20	\$3.48	



MODULE CLAMPS



SOLARMOUNT® - PRO SERIES END CLAMP

PART NUMBER	DESCRIPTION	PACK SIZE	PRICE*	COLOR
302035M	SM ENDCLAMP PRO W/CAP	4	\$4.44	



SOLARMOUNT® - UNIVERSAL AESTHETIC FASTENER (UAF)

302045D	UNIVERSAL AF MID CLAMP DRK	20	\$3.97	
302045M	UNIVERSAL AF MID CLAMP MILL	20	\$3.68	
302050D	UNIVERSAL AF END CLAMP DRK	20	\$4.57	
302050M	UNIVERSAL AF END CLAMP MILL	20	\$4.23	

ACCESSORIES AND HARDWARE



SOLARMOUNT® - MLPE MOUNT

008013S	MICRO MNT BND TBOLT 1/4X3/4 SS	100	\$1.74	
---------	--------------------------------	-----	--------	--



SOLARMOUNT® - HARDWARE WHILE SUPPLIES LAST

035014C	HDW LAG BOLT, 1/4 X 3-1/2 SS	60	\$1.37	
030027C	HDW LAG BOLT, 5/16 X 4	50	\$2.60	
030028C	HDW LAG BOLT, 5/16 X 4.5	50	\$1.98	
330050D	BND T-BOLT&NUT 1/4"X2" DRK SS	20	\$2.08	
330050S	BND T-BOLT&NUT 1/4"X2" SS	20	\$1.74	
330051S	BND T-BOLT&NUT 1/4"X2.25" SS	20	\$1.90	
330051D	BND T-BOLT&NUT 1/4"X2.25"DRKSS	20	\$2.22	
330052D	BND T-BOLT&NUT 1/4"X2.5" DRKSS	20	\$2.36	
330052S	BND T-BOLT&NUT 1/4"X2.5" SS	20	\$2.06	
009021S	BND T-BOLT&NUT 3/8" X 1" SS	20	\$1.74	
009020S	BND T-BOLT&NUT 3/8" X 3/4" SS	50	\$1.49	



SOLARMOUNT® - BUTYL GO TO PAGE 48 FOR MORE INFO

004BUTYLD	SOLARMOUNT BUTYL ATT KIT #14S DARK	20	\$14.82	
004BUTYLM	SOLARMOUNT BUTYL ATT KIT #14S MILL	20	\$12.28	
KIT INCLUDES	- ONE (1) Butyl Attachment - ONE (1) 3/8 T-Bolt & Nut - TWO (2) #14 Screws with Sealing Washer for Rafter Mounting			

ATTACHMENTS



ATTACHMENTS



SOLARMOUNT® - FLASHKIT ATTACHMENT

PART NUMBER	DESCRIPTION	PACK SIZE	PRICE*	COLOR
004055D	FLASHKIT PRO, DRK 10PK	10	\$15.73	
004055M	FLASHKIT PRO, MILL 10PK	10	\$13.82	
004015D	FLASHKIT SB, DARK	10	\$13.53	
004015M	FLASHKIT SB, MILL	10	\$11.59	
KIT INCLUDES	- ONE (1) L-Foot with Grommet - ONE (1) 3/8 T-Bolt & Nut - ONE (1) 5/16 Lag Bolt with Sealing Washer - ONE (1) Flashing			

THE SOLARMOUNT® SYSTEM IS COMPATIBLE WITH ALL OF OUR ATTACHMENTS - SEE PAGES 46 TO 59

ADDITIONAL COMPONENTS FOR SOLARMOUNT®

ATTACHMENTS

SOLARMOUNT® BUTYL	48
SOLARMOUNT® ADJUSTABLE TILT LEGS	50
FLASHLOC®	52
FLASHKIT PRO & SWITCHBLADE (SB)	53
UNIRAC STANDOFF	54
UNIRAC L-FEET	55
FLASHKIT TILE REPLACEMENT	56
SOLARHOOKS	57
FLASHLOC® CONCRETE ANCHOR	58

E-BOSS

SOLOBOX® COMP.....	62
SOLOBOX® RAIL	63
CONDUIT MOUNT BUTYL	64
TILE CONDUIT MOUNT	64
OPTIONAL FRONT TRIM & RAIL CAP	66
GROUNDING & BONDING HARDWARE	67
WIRE MANAGEMENT CLIPS	68



SOLARMOUNT® - DOMESTIC CONTENT SOLUTIONS

RAIL

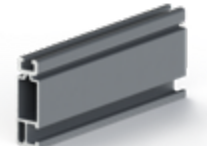
SOLARMOUNT® - LIGHT RAIL

PART NUMBER	DESCRIPTION	PACK SIZE	PRICE*	COLOR
315185D-US	SM LIGHT RAIL 185" DRK	144	\$83.40	
315246D-US	SM LIGHT RAIL 246" DRK	144	\$114.20	
315185M-US	SM LIGHT RAIL 185" MILL	144	\$59.51	
315246M-US	SM LIGHT RAIL 246" MILL	144	\$75.26	



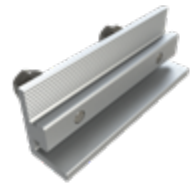
SOLARMOUNT® - STANDARD RAIL

310185D-US	SM RAIL 185" DRK	144	\$120.25	
320185M-US	SM RAIL 185" MILL	144	\$84.31	
320246M-US	SM RAIL 246" MILL	144	\$110.44	
310246D-US	SM RAIL 246" DRK	144	\$182.38	



SOLARMOUNT® - SPLICE

303019D-US	BND SPLICE BAR PRO SERIES DRK	20	\$12.01	
303019M-US	BND SPLICE BAR PRO SERIES MILL	20	\$8.91	



SOLARMOUNT® - STANDARD CLAMPS WHILE SUPPLIES LAST

302021C-US	SM ENDCLAMP B MLL AL	20	\$3.55	
302021D-US	SM ENDCLAMP B DRK AL	20	\$4.40	
302022C-US	SM ENDCLAMP C MLL AL	20	\$3.52	
302022D-US	SM ENDCLAMP C DRK AL	20	\$4.47	
302023C-US	SM ENDCLAMP D MLL AL	20	\$3.91	
302023D-US	SM ENDCLAMP D DRK AL	20	\$4.84	
302024C-US	SM ENDCLAMP E MLL AL	20	\$4.24	
302024D-US	SM ENDCLAMP E DRK AL	20	\$5.27	
302025C-US	SM ENDCLAMP F MLL AL	20	\$4.05	
302025D-US	SM ENDCLAMP F DRK AL	20	\$5.02	
302026C-US	SM ENDCLAMP K MLL AL	20	\$3.81	
302026D-US	SM ENDCLAMP K DRK AL	20	\$4.73	
302027C-US	SM BND MIDCLAMP BC SS	20	\$4.00	
302027D-US	SM BND MIDCLAMP BC DRK SS	20	\$5.23	
302028C-US	SM BND MIDCLAMP EF SS	20	\$3.98	
302028D-US	SM BND MIDCLAMP EF DRK SS	20	\$5.19	
302029C-US	SM BND MIDCLAMP DK SS	20	\$4.18	
302029D-US	SM BND MIDCLAMP DK DRK SS	20	\$5.42	



STRUCTURAL FASTENERS



SOLARMOUNT® - DOMESTIC CONTENT SOLUTIONS

STRUCTURAL FASTENERS

SOLARMOUNT® - UNIVERSAL MLPE

PART NUMBER	DESCRIPTION	PACK SIZE	PRICE*	COLOR
MLPEMNT-US	UNIVERSAL MLPE MOUNT	10	\$3.70	



ATTACHMENTS

SOLARMOUNT® - BUTYL

PART NUMBER	DESCRIPTION	PACK SIZE	PRICE*	COLOR
004BUTYLM-US	SOLARMOUNT BUTYL ATT KIT #14S MILL	20	\$14.68	
004BUTYLD-US	SOLARMOUNT BUTYL ATT KIT #14S DARK	20	\$16.48	



ADDITIONAL DOMESTIC CONTENT SOLUTIONS

SOLARMOUNT® ADJUSTABLE TILT LEGS	55
SOLARMOUNT® STANDOFF	54
UNIRAC L-FEET	51

**The content provided in this bulletin is for informational purposes only; it is not tax advice. Unirac cannot provide, and is not providing, tax advice regarding eligibility for tax credits, including the DCBC adder, as eligibility depends on several factors including a tax payer's risk profile. Unirac is not a tax professional. The information provided here is Unirac's good faith interpretation of these terms as of the publishing date of this bulletin, and that interpretation shall not be relied on for claiming the DCBC. Unirac's interpretation and use of "rails" and "structural fasteners" in this bulletin is informative, non-limiting guidance only and is not intended to impede a tax payer's interpretation of such terms. Unirac makes no representation or warranty that any customer or taxpayer will be able to claim a tax credit—including the DCBC—if it purchases Unirac domestic components. Not all parties can claim the domestic content bonus. Customers must consult their own tax advisors to determine eligibility.*

***Subject to inclusion on a TPO domestic content AVL and/or customer's independent validation through its tax advisors. Unirac makes no representation or warranty regarding eligibility*.*

**Prices are subject to change without notice. For detailed product information including current pricing, dimensions, pallet qty's and UPC, refer to the Q1 2026 Unirac Price List. All prices are per unit. Pack Size reflects the minimum order quantity.*

SFM INFINITY™

FEATURES

- PRE-ASSEMBLED COMPONENTS AND ONE-TOOL INSTALLATION
- DESIGN FLEXIBILITY ALLOWS FOR MIX MODULE LAYOUTS
- SLEEK AESTHETICS WITH RECESSED FASTENERS



CONFORMS TO
UL 2703

APPLICATION



SCAN TO SEE
PRODUCT BROCHURE

Elevate your solar system with SFM INFINITY™, Unirac's rail-less PV system for mount installation on comp-shingle and tile roofs.

SFM INFINITY™ embodies Unirac's heritage of innovation by optimizing operations on and off the rooftop with ergonomically designed strength and adaptability. Save time and money on logistics, expensive on-roof labor, and attachments!

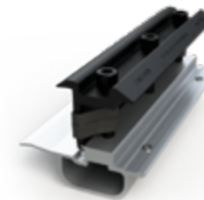
BONDING & GROUNDING



SFM INFINITY™ - BONDING AND GROUNDING

PART NUMBER	DESCRIPTION	PACK SIZE	PRICE*	COLOR
008000U	SFM N/S BONDING CLAMP	20	\$3.01	
008100U	SFM TRIM BONDING CLAMP	10	\$5.23	

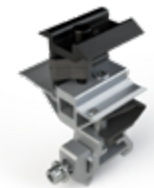
SPLICE



SFM INFINITY™ - RAIL-LESS SPLICE

250030U	SFM ATTACHED SPLICE 8"	10	\$18.24	
253030U	SFM ATTACHED SPLICE 8" 30MM	10	\$17.86	
250010U	SFM SPLICE 6.5"	10	\$12.77	
253010U	SFM SPLICE 6.5" 30MM	10	\$12.52	

MICRO RAIL AND TRIMRAIL



SFM INFINITY™ - RAIL-LESS MICRORAIL

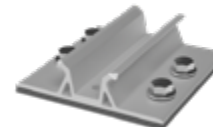
250111U	SSFM MICRORAIL 2"	10	\$11.02	DARK
253020U	SFM MICRORAIL 2" 30MM	10	\$11.02	



SFM INFINITY™ - STRUCTURAL TRIM COMPONENTS

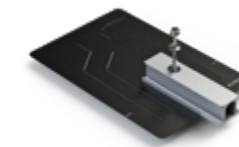
250130U	SFM TRIM END CAPS	10	\$1.35	
250120U	SFM TRIM SPLICE DRK	10	\$5.31	
256072U	SFM TRIMRAIL 72" UNIV DRK	4	\$44.53	DARK
250111U	SFM TRIMRAIL UNIV CLIP W/HDW	10	\$3.84	

ATTACHMENTS



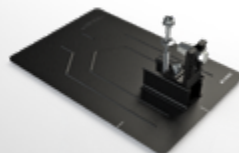
SFM INFINITY™ - BUTYL ATTACHMENT

SFMBTLM1	SFM BUTYL ATT KIT #14S MILL	20	\$11.69	MILL
KIT INCLUDES				
- ONE (1) SFM Butyl Attachment				
- TWO (2) #14 Screws with Sealing Washer for Rafter Mounting				
SOLD SEPARATELY: EXTRA #14 SCREWS AND BUTYL PADS SEE PAGE 48				



SFM INFINITY™ - FLASHKIT SFM

004080D	FLASHKIT SFM NRE COMP DARK	5	\$26.14	
004270D	FLASHKIT SFM SLIDER COMP DARK	10	\$15.90	
004271D	FLASHKIT SFM SLIDER S COMP DARK	10	\$13.00	DARK
KIT INCLUDES				
- ONE (1) Slider with Grommet				
- ONE (1) 5/16 Structural Screw with Sealing Washer				
- ONE (1) Flashing				



004200D	FLASHKIT SFM TRIM COMP DARK	10	\$12.58	DARK
004201D	FLASHKIT SFM TRIM S COMP DARK	10	\$9.88	
KIT INCLUDES				
- ONE (1) Trim Attachment with Grommet				
- ONE (1) 3/8 Bolt & Nut / - ONE (1) Flashing				
- ONE (1) 5/16 Structural Screw with Sealing Washer				

TILE REPLACEMENT

SFM INFINITY™ - FLASHKIT SFMTR ⌚ WHILE SUPPLIES LAST



PART NUMBER	DESCRIPTION	PACK SIZE	PRICE*	COLOR
⌚ 00520TR	FLASHKIT SFMTR TRIM ATT (2/2)	10	\$20.32	
KIT INCLUDES	- ONE (1) Trim Attachment with Grommet - ONE (1) 3/8 Bolt & Nut - ONE (1) 3/8 Nut for Attachment Connection			
⌚ 00527TR	FLASHKIT SFMTR SLIDER (2/2)	10	\$10.63	
KIT INCLUDES	- ONE (1) Slider - ONE (1) 3/8 Nut for Attachment Connection			
⌚ 005TRFA	FLASHKIT SFMTR F ADOBE (1/2)	10	\$27.52	
⌚ 005TRFD	FLASHKIT SFMTR F CHARCL (1/2)	10	\$27.52	
⌚ 005TRFM	FLASHKIT SFMTR F MILL (1/2)	10	\$24.70	
⌚ 005TRSA	FLASHKIT SFMTR S ADOBE (1/2)	10	\$26.71	
⌚ 005TRSD	FLASHKIT SFMTR S CHARCL (1/2)	10	\$22.04	
⌚ 005TRSM	FLASHKIT SFMTR S MILL (1/2)	10	\$23.89	
⌚ 005TRWA	FLASHKIT SFMTR W ADOBE (1/2)	10	\$26.41	
⌚ 005TRWD	FLASHKIT SFMTR W CHARCL (1/2)	10	\$21.79	
⌚ 005TRWM	FLASHKIT SFMTR W MILL (1/2)	10	\$19.46	
KIT INCLUDES	- ONE (1) Tile Replacement Flashing - ONE (1) Tiered Riser - ONE (1) Stainless Steel Riser Bolt with Anti-Seize - ONE (1) Base Plate w/ Butyl - TWO (2) 5/16 Lag Bolt with Sealing Washer			

SOLD SEPARATELY: OPTIONAL SUB-FLASHINGS - SEE PAGE 56 FOR MORE INFO

HARDWARE

SFM INFINITY™ - STRUCTURAL SCREW ⌚ WHILE SUPPLIES LAST



⌚ 030040C	STRUCTURAL SCREW 5/16 X 4 SS	50	\$2.35	
⌚ 009040S	SFM TRINUT KIT	100	\$1.51	

TOOLS

SFM INFINITY™ - HEX INSTALLATION TOOL



009030S	UNIRAC 1/4" HEX TOOL	10	\$4.53	
---------	----------------------	----	--------	--

ADDITIONAL COMPONENTS FOR SFM INFINITY™

E-BOSS

SOLOBOX® COMP.....	62
SOLOBOX® RAIL.....	63
CONDUIT MOUNT BUTYL.....	64
MLPE MOUNT.....	66
WIRE MANAGEMENT CLIPS.....	68
ENPHASE ENGAGE CABLE CLIP.....	68

METAL X®

FEATURES

- LOWEST COST PER WATT
- SIMPLE, RAIL-FREE RACKING SYSTEM
- UNIVERSAL MODULE FIT - WORKS WITH PANEL THICKNESSES OF 30-40MM
- INSTALLS ON ANY METAL ROOF PROFILE



CONFORMS TO
UL 2703

APPLICATION



SCAN TO SEE
MORE PRODUCT INFO

The entire METAL X® Racking System consists of small components that are easy to ship, transport, load onto the roof, and install. No rails are needed.

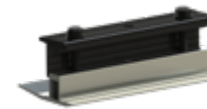
Components fit every module thickness, so any module can be installed on every metal roof. Installer-focused design delivers fast, simple installation at the lowest cost per watt for industrial, commercial and residential metal rooftops.

CLAMPS & COUPLING



METAL X® - **CLAMPS** ⚠️ WHILE SUPPLIES LAST

PART NUMBER	DESCRIPTION	PACK SIZE	PRICE*	COLOR
ES10828	METAL X END CLAMP	108	\$8.49	
ES10829	METAL X MID CLAMP	108	\$8.45	
ES10835	METAL X END 30 CLAMP	108	\$8.24	
ES10836	METAL X MID 30 CLAMP	108	\$8.17	



METAL X® - **COUPLING** ⚠️ WHILE SUPPLIES LAST

MTXCOUPL1	METAL X END COUPLING	10	\$12.29	
ES10368	METAL X COUPLING	24	\$13.11	
ES10924	METAL X COUPLING 30MM	24	\$12.29	

HARDWARE



METAL X® - **HARDWARE** ⚠️ WHILE SUPPLIES LAST

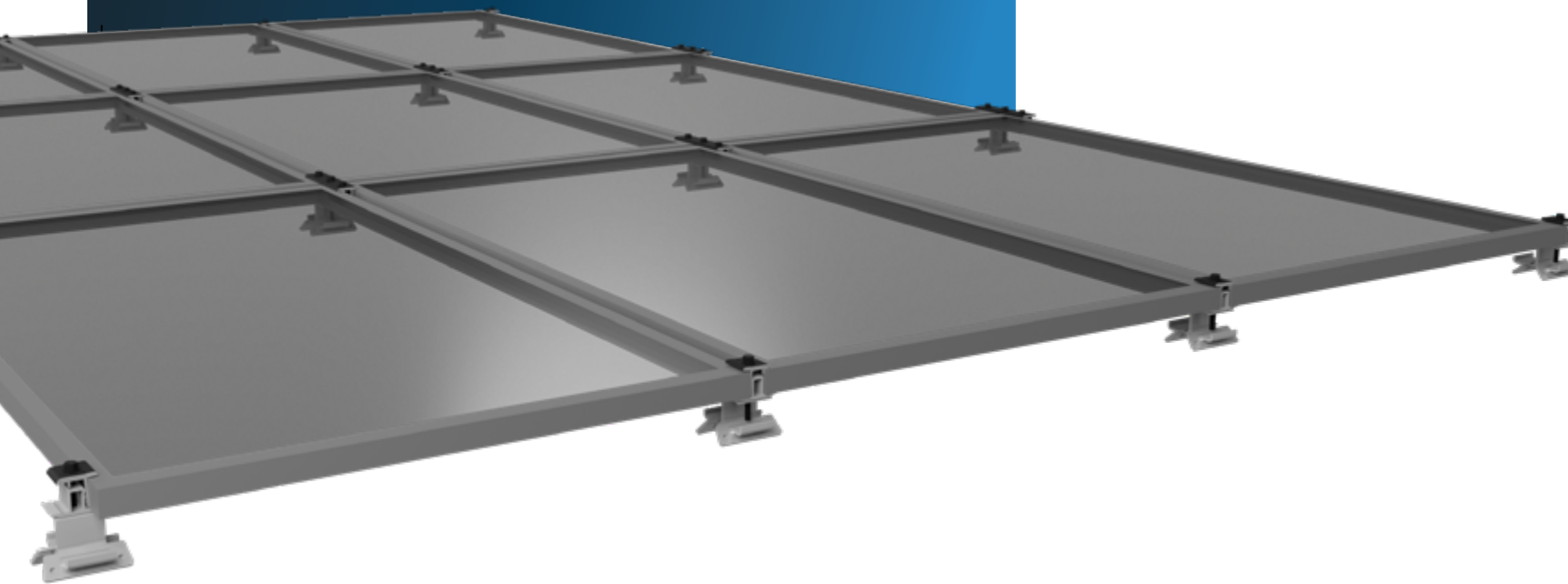
ES10325	5/16-18 SERR FLNG HEX NUT	100	\$0.18	
ES10085	BOLT, SERR FLNG BLK, 5/16X2	100	\$1.48	
ES10079	BOLT, SERR FLNG BLK, 5/16X2.5	100	\$1.46	
ES10271	BOLT, SERR FLNG BLK, 5/16X3	100	\$1.37	
ES10889	BOLT, CAP HEX, M8 X 55	200	\$1.22	SS
ES10890	BOLT, CAP HEX, M8 X 60	200	\$1.24	
ES10891	BOLT, CAP HEX, M8 X 65	200	\$1.20	
ES10892	BOLT, CAP HEX, M8 X 70	200	\$1.20	
ES10893	BOLT, CAP HEX, M8 X 75	200	\$1.46	
ES10894	WASHER, M8	200	\$0.10	

BONDING AND GROUNDING



METAL X® - **BONDING AND GROUNDING** ⚠️ WHILE SUPPLIES LAST

ES10201	ECOX BONDING JUMPER 8"	5	\$3.73	
ES10260	ECOX ROW TO ROW BONDING CLIP	800	\$0.61	SS
ES11108	METAL X 30MM ROW BONDING CLIP	10	\$0.60	



METAL X® - **STANDING SEAM** Ⓞ WHILE SUPPLIES LAST

PART NUMBER	DESCRIPTION	PACK SIZE	PRICE*	COLOR
004130M	STANDING SEAM CLAMP, MINI 1SS	50	\$11.33	SS
004131M	STANDING SEAM CLAMP, STAND 2SS	50	\$12.39	
004132M	STANDING SEAM CLAMP, WIDE 2SS	50	\$14.00	
Ⓞ ES10674	STANDING SEAM, STAND 2SS 5/16"	50	\$10.56	
Ⓞ ES10675	STANDING SEAM, KLOC 2SS 5/16"	48	\$12.31	
Ⓞ ES10676	STANDING SEAM, WIDE 2SS 5/16"	48	\$13.78	
Ⓞ ES10918	STANDING SEAM, MINI 2SS 5/16"	48	\$9.14	
Ⓞ ES10919	STANDING SEAM, KLOC MINI 5/16"	48	\$10.74	



METAL X® - **R-PANEL**

004257M	R-PANEL METAL ROOF MNT, 9000-S	50	\$11.09	SS
004259M	R-PANEL POWERMOUNT ADJUST	50	\$15.60	



METAL X® - **CORRUBRACKET** Ⓞ WHILE SUPPLIES LAST

Ⓞ ES10830	CORRUBRACKET 100T	60	\$14.25	DARK
ES10875	RIBBRACKET I	75	\$13.44	
ES10877	RIBBRACKET II	75	\$14.54	
ES10879	RIBBRACKET III	75	\$15.16	
ES10881	RIBBRACKET IV	75	\$14.54	



METAL X® - **PM ADJUST**

ES11209	PM ADJUST SLOTTED	50	\$19.65	SS
---------	-------------------	----	---------	----



METAL X® - **ROOFING SCREWS** Ⓞ WHILE SUPPLIES LAST

ES10883	ROOFING SCREW, METAL TO METAL, 1.5"	240	\$0.75	SS
Ⓞ ES10831	ROOFING SCREW, METAL TO WOOD, 1.5"	240	\$0.65	



ADDITIONAL COMPONENTS FOR METAL X®

MLPE TIGER CLIP	66
ONE WIRE CLIP, SS, DCS 1306	68
TWO WIRE CLIP, SS, DCS 1307	68
HEYCO SUNRUNNER 2-S CLIP 100/B	68
HEYCO SUNRUNNER 4-2U CLIP 100/B	68
HEYCO SUNRUNNER CLIP 100/B	68
HEYCO SUNRUNNER 4 CLIP 100/B	68

RM10 EVO™

FEATURES

- HIGHER POWER DENSITY, 13" INTER-ROW SPACING
- MINIMAL SKUS: FIELD BAY, NORTH ROW BAY & A UNIVERSAL CLAMP
- ONE TOOL INSTALLATION

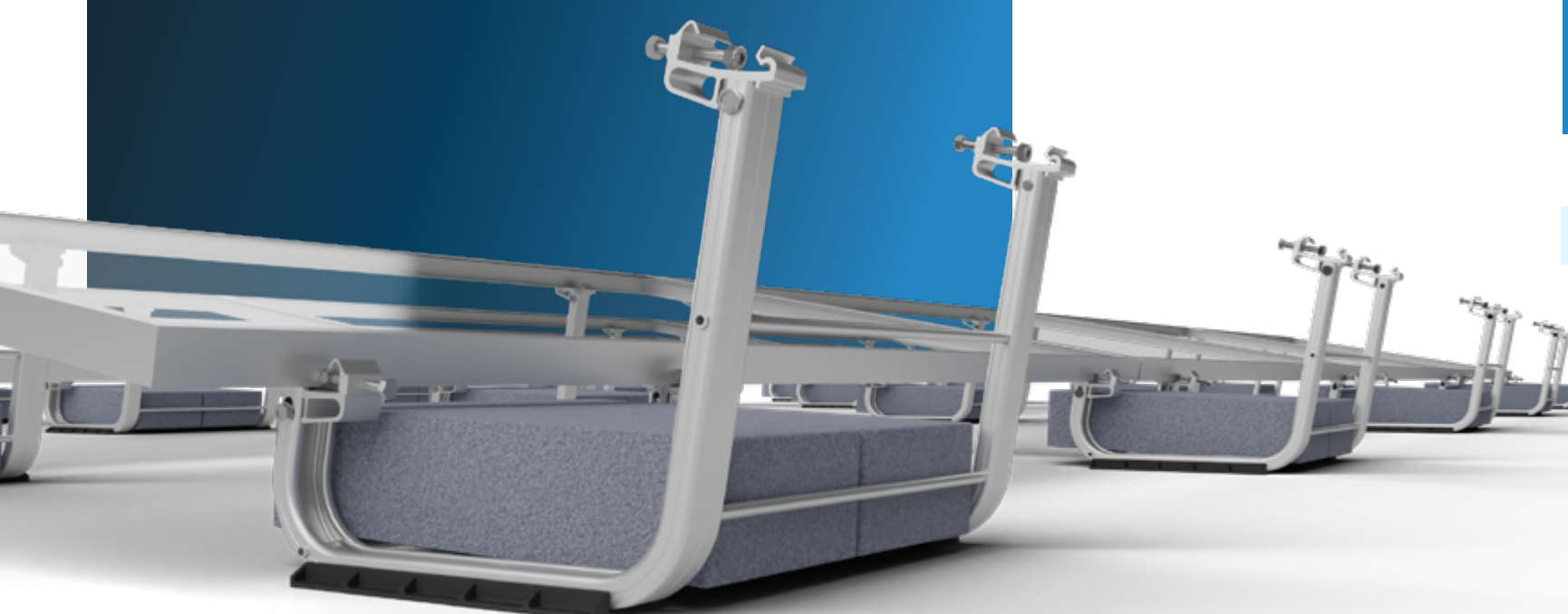


CONFORMS TO
UL 3741

CONFORMS TO
UL 2703



APPLICATION



SCAN TO SEE
PRODUCT BROCHURE

Unirac has taken the tried-and-true form and functionality of RM10 and evolved it to maximize the potential of flat roof solar projects. We have paired simplicity with power by improving the function, strength, and reliability of the module clamps and modifying the shape of the North Row Bay to optimize space and increase module density.

BAY



RM10 EVO™ - BAY

PART NUMBER	DESCRIPTION	PACK SIZE	PRICE*
370010	RM10 EVO FIELD BAY	100	\$61.14
✓ 370010-US	RM10 EVO FIELD BAY (US)	100	\$64.99
370011	RM10 EVO NORTH BAY	72	\$61.14

CLAMPS



RM10 EVO™ - CLAMPS

370022	EVO MOD CLAMP SIDE BOLT BULK	100	\$1.13
370023	EVO MOD CLAMP BULK	100	\$4.19
✓ 370023-US	EVO MOD CLAMP BULK	100	\$6.15

MID-SUPPORT



RM10 EVO® - MID SUPPORT

370030	EVO MID SUPPORT	20	\$21.30
--------	-----------------	----	---------

ATTACHMENTS



RM10 EVO™ - ATTACHMENTS

310760	RM10 EVO ROOF PAD	200	\$ 2.54
✓ 310760-US	RM10 EVO ROOF PAD	200	\$ 2.70
310771	RM10 EVO ATTACHMENT KIT	1	\$26.80

ADDITIONAL COMPONENTS FOR RM10 EVO®

ATTACHMENTS

FLASHLOC® RM FLAT ROOF ATTACHMENT 59

E-BOSS

MLPE MOUNT ASSY 66

MLPE TIGER CLIP 66

GROUND WEEBLUG #1 67

ILSCO LAY IN LUG 67

ENPHASE ENGAGE CABLE CLIP 68

NEW GRIDFLEX® 5D

FEATURES

- LOW PROFILE DESIGN REDUCES WIND UPLIFT
- WIND DEFLECTORS ONLY NEEDED AT NORTH EDGE
- SHARED RAIL & STRUCTURAL CONNECTIONS REDUCE BALLAST AND ENHANCE LOAD DISTRIBUTION

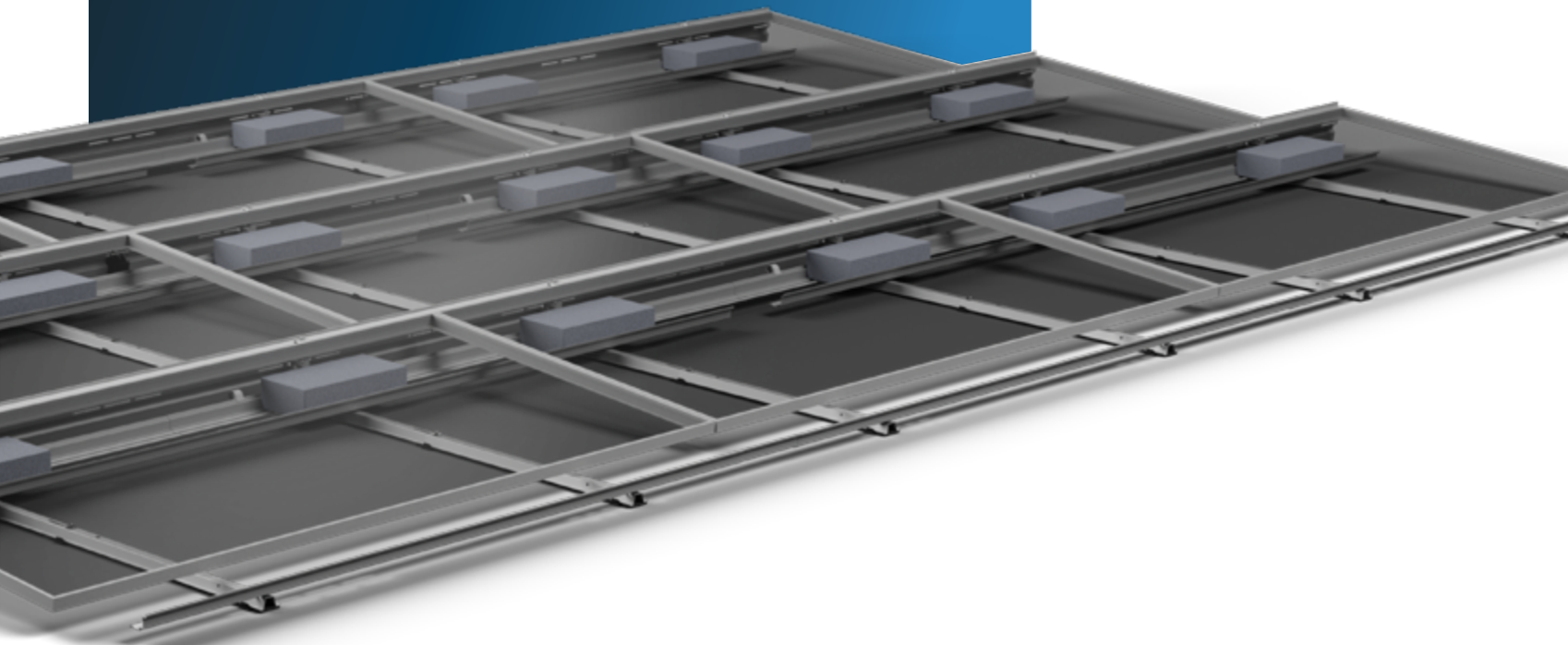


CONFORMS TO
UL 3741

CONFORMS TO
UL 2703



APPLICATION



SCAN TO SEE
PRODUCT BROCHURE

GRIDFLEX® 5D combines strength and flexibility for the best in flat roof solar. Low ballast counts and ultimate array design flexibility. Rail sections connect to create a rigid structure that greatly reduces ballast weight. Modular, pre-assembled components offer ultimate array design flexibility and installer-preferred construction process. Additionally, pre-assembled stanchion clamps secure the inside and outside of the module frame for robust, reliable connections.

RAILS



GRIDFLEX® 5D - RAILS

PART NUMBER	DESCRIPTION	PACK SIZE	PRICE*
381010-US	GFX5D SOUTH RAIL, MW 39-45", RS 7/11"		\$8.65
381020-US	GFX5D SOUTH RAIL, MW 45-52", RS 7/11"		\$9.72
381100-US	GFX5D MID RAIL, MW 39-45", RS 7/11"		\$17.48
381110-US	GFX5D MID RAIL, MW 45-52", RS 7/11"		\$18.03
381200-US	GFX5D NORTH RAIL, MW 39-52", RS 7/11"		\$11.50
381050-US	GFX5D RAIL STIFFENER, MW 39-45"		\$7.00
381051-US	GFX5D RAIL STIFFENER, MW 45-52"		\$7.75
380302-US	GFXD BALLAST RAIL		\$8.25
380305-US	GFXD AL BALLAST RAIL		\$16.25

DEFLECTORS



GRIDFLEX® 5D - DEFLECTORS

381400-US	GFX5D WIND DEFLECTOR, 65" - 69"		\$17.89
381401-US	GFX5D WIND DEFLECTOR, 69" - 73"		\$18.89
381402-US	GFX5D WIND DEFLECTOR, 73" - 77"		\$19.89
381410-US	GFX5D WIND DEFLECTOR, 77" - 82"		\$20.89
381420-US	GFX5D WIND DEFLECTOR, 82" - 87"		\$21.89
381430-US	GFX5D WIND DEFLECTOR, 87" - 92"		\$22.89
381440-US	GFX5D WIND DEFLECTOR, 92" - 97"		\$23.89
381450-US	GFX5D WIND DEFLECTOR, 97" - 100"		\$24.89

CLAMPS



GRIDFLEX® 5D - CLAMPS

381601-US	GFX5D NORTH STANCHION	20	\$10.45
380701-US	GFXD SOUTH CLAMP	20	\$6.05

ACCESSORY AND ROOF PAD



GRIDFLEX® 5D - ROOF PAD

380800-US	GFXD ROOF PAD - STACK	150	\$1.75
380802-US	GFXD ROOF PAD - CLIP-ON	100	\$1.75

GRIDFLEX® 5D - ACCESSORY

GFSPACE1	GRIDFLEX SPACER TOOL KIT	12	\$ 12.59
----------	--------------------------	----	----------

HARDWARE AND ATTACHMENT



GRIDFLEX® 5D - HARDWARE

380930	GFXD HARDWARE KIT	100	\$65.82
--------	-------------------	-----	---------

GRIDFLEX® 5D - ATTACHMENT

360250-US	GRIDFLEX ATT CONNECTION KIT	20	\$33.50
-----------	-----------------------------	----	---------

ADDITIONAL COMPONENTS FLASHLOC® RM FLAT ROOF ATTACHMENT 59

NEW

GRIDFLEX[®] 10D

FEATURES

- AIRFLOW-DEFLECTING DESIGN OPTIMIZES MODULE UPLIFT RESISTANCE TO REDUCE OVERALL ATTACHMENT AND BALLAST COUNTS
- RAIL-STAMPED MEASUREMENT GUIDE FOR ACCURATE INSTALLATION
- INTEGRATED WIRE MANAGEMENT



CONFORMS TO
UL 3741

CONFORMS TO
UL 2703



APPLICATION



SCAN TO SEE
PRODUCT BROCHURE

GRIDFLEX[®] 10D is Unirac's advanced 10-degree flat roof racking solution, engineered for strength, efficiency, and long-term performance. It minimizes ballast and attachments to reduce overall system costs while maximizing structural stability and roof utilization. User-friendly clamps, labeled connections, and precision guides ensure quick, accurate installation, while the swing-up access design simplifies maintenance and single-module servicing. With integrated wire management and flexible row spacing, GridFlex[®] 10D delivers a clean, secure, and cost-effective approach to flat roof solar installations.

RAILS



WIND DEFLECTOR



CLAMPS



ATTACHMENTS



GRIDFLEX[®] 10D - RAILS

PART NUMBER	DESCRIPTION	PACK SIZE	PRICE*
380302	GFXD BALLAST RAIL	10	\$8.25
380101	GFX10D MID RAIL, MW 39-45", RS 10/13"	20	\$17.48
380121	GFX10D MID RAIL, MW 39-45", RS 17"	20	\$18.52
380111	GFX10D MID RAIL, MW 45-52", RS 10/13"	20	\$18.03
380131	GFX10D MID RAIL, MW 45-52", RS 17"	20	\$19.04
380201	GFX10D NORTH RAIL, MW 39-52"	20	\$11.50
380012	GFX10D SOUTH RAIL, 39"-45" MW	20	\$8.65
380022	GFX10D SOUTH RAIL, 45"-52" MW	20	\$9.72
380050	GFX10D RAIL STIFFENER, MW 39-45"	20	\$7.00
380051	GFX10D RAIL STIFFENER, MW 45-52"	20	\$7.75

GRIDFLEX[®] 10D - WIND DEFLECTOR

380405	GFX10D WIND DEFLECTOR BRACKET	50	\$6.27
380400	GFX10D WIND DEFLECTOR 65"-69"	10	\$17.66
380401	GFX10D WIND DEFLECTOR 69-73"	10	\$18.68
380402	GFX10D WIND DEFLECTOR 73-77"	10	\$19.73
380410	GFX10D WIND DEFLECTOR 77-82"	10	\$20.80
380420	GFX10D WIND DEFLECTOR 82-87"	10	\$21.85
380430	GFX10D WIND DEFLECTOR 87-92"	10	\$22.89
380440	GFX10D WIND DEFLECTOR 92-97"	10	\$23.94
380450	GFX10D WIND DEFLECTOR 97-100"	10	\$24.98

GRIDFLEX[®] 10D - CLAMPS

380601	GFX10D NORTH STANCHION	20	\$11.55
380701	GFXD SOUTH CLAMP	20	\$6.05

GRIDFLEX[®] 10D - ATTACHMENTS

360250	GRIDFLEX ATT CONNECTION KIT	20	\$33.50
--------	-----------------------------	----	---------

ACCESSORIES

GRIDFLEX® 10D - ROOF PAD



PART NUMBER	DESCRIPTION	PACK SIZE	PRICE
380800	GFXD ROOF PAD - STACK	150	\$ 1.58
380802	GFXD ROOF PAD - CLIP-ON	100	\$ 1.58

GRIDFLEX® 10D - ACCESSORY



GFSPACE1	GRIDFLEX SPACER TOOL KIT	12	\$ 12.59
----------	--------------------------	----	----------

GRIDFLEX® 10D - WIRE MANAGEMENT



380902	GFXD WIRE MANAGEMENT CLIP	30	\$0.52
380922	GFX10D WIRE MANAGEMENT H/R, 10/13"	5	\$9.29
380942	GFX10D WIRE MANAGEMENT H/R, 17"	5	\$11.77

GRIDFLEX® 10D - HARDWARE



380930	GFXD HARDWARE KIT	100	\$65.82
--------	-------------------	-----	---------

ADDITIONAL COMPONENTS FOR GRIDFLEX®

ATTACHMENTS

FLASHLOC® RM FLAT ROOF ATTACHMENT	59
-----------------------------------	----



GRIDFLEX 10D® - DOMESTIC CONTENT SOLUTIONS

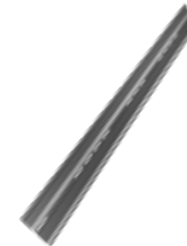
RAILS



GRIDFLEX® 10D - RAILS

PART NUMBER	DESCRIPTION	PACK SIZE	PRICE*
380012-US	GFX10D SOUTH RAIL, 39"-45" MW	20	\$9.65
380022-US	GFX10D SOUTH RAIL, 45"-52" MW	20	\$10.72
380101-US	GFX10D MID RAIL, MW 39-45", RS 10/13"	20	\$18.48
380121-US	GFX10D MID RAIL, MW 39-45", RS 17"	20	\$19.03
380111-US	GFX10D MID RAIL, MW 45-52", RS 10/13"	20	\$19.52
380131-US	GFX10D MID RAIL, MW 45-52", RS 17"	20	\$20.04
380201-US	GFX10D NORTH RAIL, MW 39-52"	20	\$11.50
380050-US	GFX10D RAIL STIFFENER, MW 39-45"	20	\$7.00
380051-US	GFX10D RAIL STIFFENER, MW 45-52"	20	\$7.75
380302-US	GFXD BALLAST RAIL	10	\$8.25
380305-US	GFXD AL BALLAST RAIL	-	\$16.25

WIND DEFLECTOR



GRIDFLEX® 10D - WIND DEFLECTOR

380400-US	GFX10D WIND DEFLECTOR 65"-69"	1	\$18.66
380401-US	GFX10D WIND DEFLECTOR 69-73"	1	\$19.68
380402-US	GFX10D WIND DEFLECTOR 73-77"	1	\$20.73
380410-US	GFX10D WIND DEFLECTOR 77-82"	1	\$21.80
380420-US	GFX10D WIND DEFLECTOR 82-87"	1	\$22.85
380430-US	GFX10D WIND DEFLECTOR 87-92"	1	\$23.89
380440-US	GFX10D WIND DEFLECTOR 92-97"	1	\$24.94
380450-US	GFX10D WIND DEFLECTOR 97-100"	1	\$25.98

CLAMPS & ACCESSORIES



GRIDFLEX® 10D - CLAMPS & ACCESSORIES

380601-US	GFX10D NORTH STANCHION	20	\$11.55
380701-US	GFXD SOUTH CLAMP	20	\$6.05
360250-US	GRIDFLEX ATT CONNECTION KIT	20	\$33.50

ATTACHMENTS



GRIDFLEX® 10D - ROOF PAD

380800-US	GFXD ROOF PAD - STACK	150	\$1.75
380802-US	GFXD ROOF PAD - CLIP-ON	100	\$1.75

GRIDFLEX® 10D - ATTACHMENTS

360250-US	GRIDFLEX ATT CONNECTION KIT	20	\$33.50
-----------	-----------------------------	----	---------

ROOFMOUNT™ | RM5

FEATURES

- OPTIMIZE LAYOUTS WITH 7.5" OR 11" ROW SPACING
- FAST INSTALLATION WITH SNAP-IN HARDWARE AND ENHANCED MID-SUPPORT
- INTEGRATED WIRE MANAGEMENT

APPLICATION



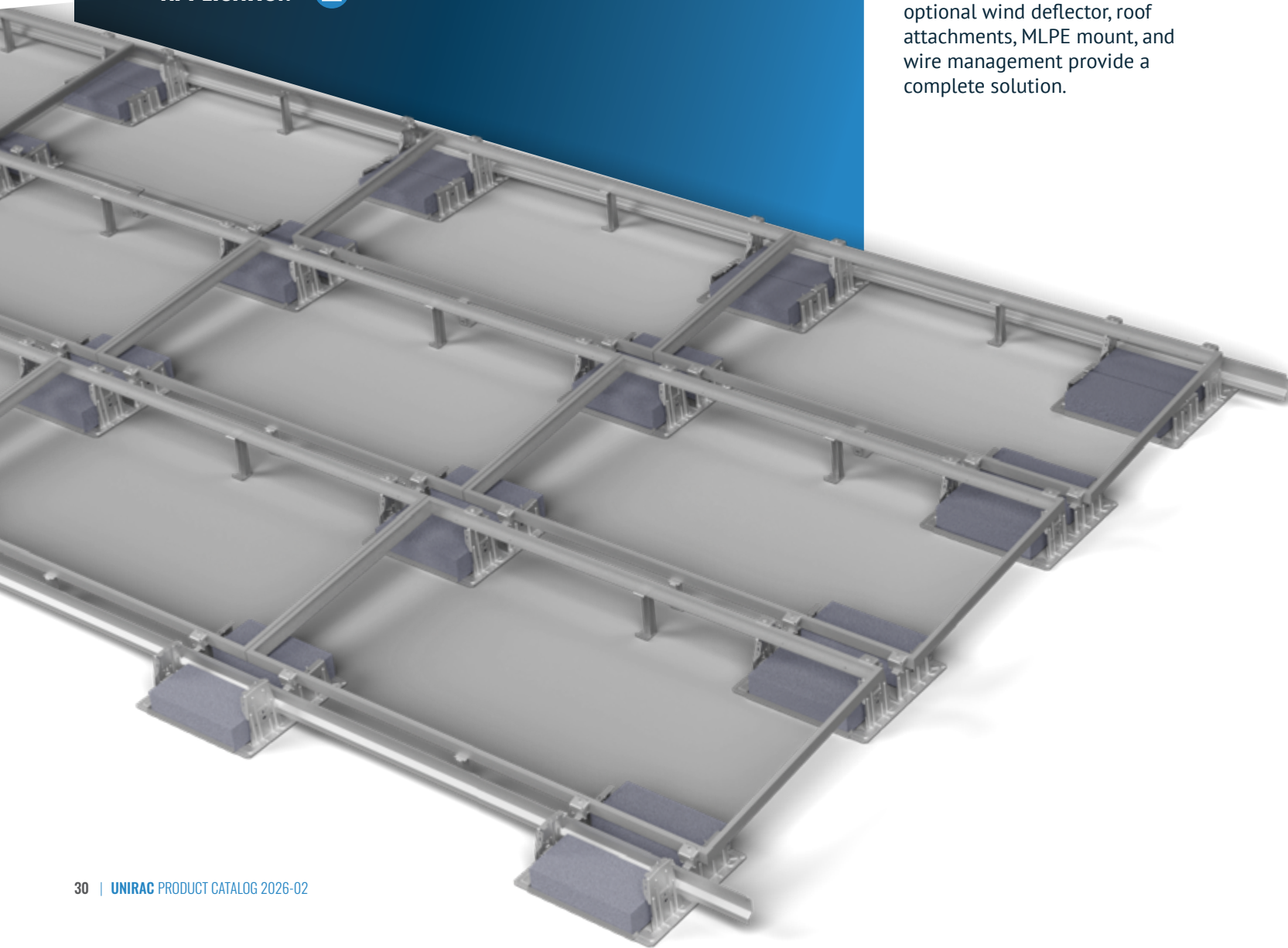
CONFORMS TO
UL 3741

CONFORMS TO
UL 2703

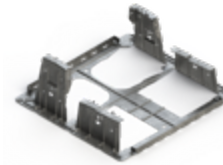


SCAN TO SEE
PRODUCT BROCHURE




RM5 is a ballasted south-facing five-degree tilt mounting system for flat roofs. Fewer components, single tool installation, snap-in hardware, and integrated bonding ensure high speed installation, while features such as 7.5" or 11" row spacing and optional wind deflector, roof attachments, MLPE mount, and wire management provide a complete solution.



BAYS




ROOFMOUNT™ RM5 - BAYS

PART NUMBER	DESCRIPTION	PACK SIZE	PRICE*	COLOR
310800	RM5 BAY	200	\$49.27	
310803	RM5 BAY, PVC	200	\$53.94	
 310800-US	RM5 BAY	200	\$57.59	
 310803-US	RM5 BAY, PVC	200	\$62.76	

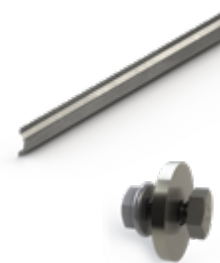
CLAMPS



ROOFMOUNT™ RM5 / RMDT - CLAMPS COMPATIBLE WITH ROOFMOUNT™ RMDT - P. 34

310820	RM5/DT ENDCLAMP 30-40MM	20	\$4.48	
310821	RM5/DT ENDCLAMP 41-45MM	20	\$4.58	
310822	RM5/DT ENDCLAMP 46-50MM	20	\$4.47	

WIND DEFLECTOR



ROOFMOUNT™ RM5 - WIND DEFLECTOR

310810	RM5 WIND DEFLECTOR, 84"	60	\$23.18	
310811	RM5 WIND DEFLECTOR, 98"	60	\$27.80	
 310810-US	RM5 WIND DEFLECTOR, 84"	60	\$25.31	
 310811-US	RM5 WIND DEFLECTOR, 98"	60	\$30.81	
310861	RM5 WIND DEFLECTOR HDW KIT	20	\$0.46	

ATTACHMENTS




ROOFMOUNT™ RM5 / RMDT - ATTACHMENTS COMPATIBLE WITH ROOFMOUNT™ RMDT - P. 34

310830	RM5/DT PVC ROOF FRICTION PATCH	500	\$0.81	
310882	RM5/DT H-ATTACHMENT KIT	1	\$47.53	



RM5™ - MID SUPPORT KIT

310835	RM5 MID SUPPORT KIT	20	\$21.29	
--------	---------------------	----	---------	---

E-BOSS



ROOFMOUNT™ RM5 / RMDT - WIRE MANAGEMENT CLIPS COMPATIBLE WITH ROOFMOUNT™ RMDT - P. 34

310850	RM5/DT WIRE MGMT CLIP	20	\$ 2.36	
310851	RM5 WD WIRE MGMT CLIP	20	\$ 3.40	
310860	RM5/DT 1/4-20 CLIP U-NUT SS	20	\$ 0.65	

ADDITIONAL COMPONENTS FOR ROOFMOUNT™ RM5

ATTACHMENTS

FLASHLOC® RM FLAT ROOF ATTACHMENT 59

E-BOSS

MLPE MOUNT ASSY 66

MLPE TIGER CLIP 66

GROUND WEEBLUG #1 67

ILSCO LAY IN LUG 67

ENPHASE ENGAGE CABLE CLIP 68

ROOFMOUNT™ | RMDT

FEATURES

- DUAL-TILT LAYOUT INCREASE SYSTEM DENSITY
- ONLY TWO SKUS; BAYS AND CLAMPS FOR A FAST INSTALL
- GALVANIZED FRAMES PROVIDE CORROSION PROTECTION



CONFORMS TO
UL 3741

CONFORMS TO
UL 2703



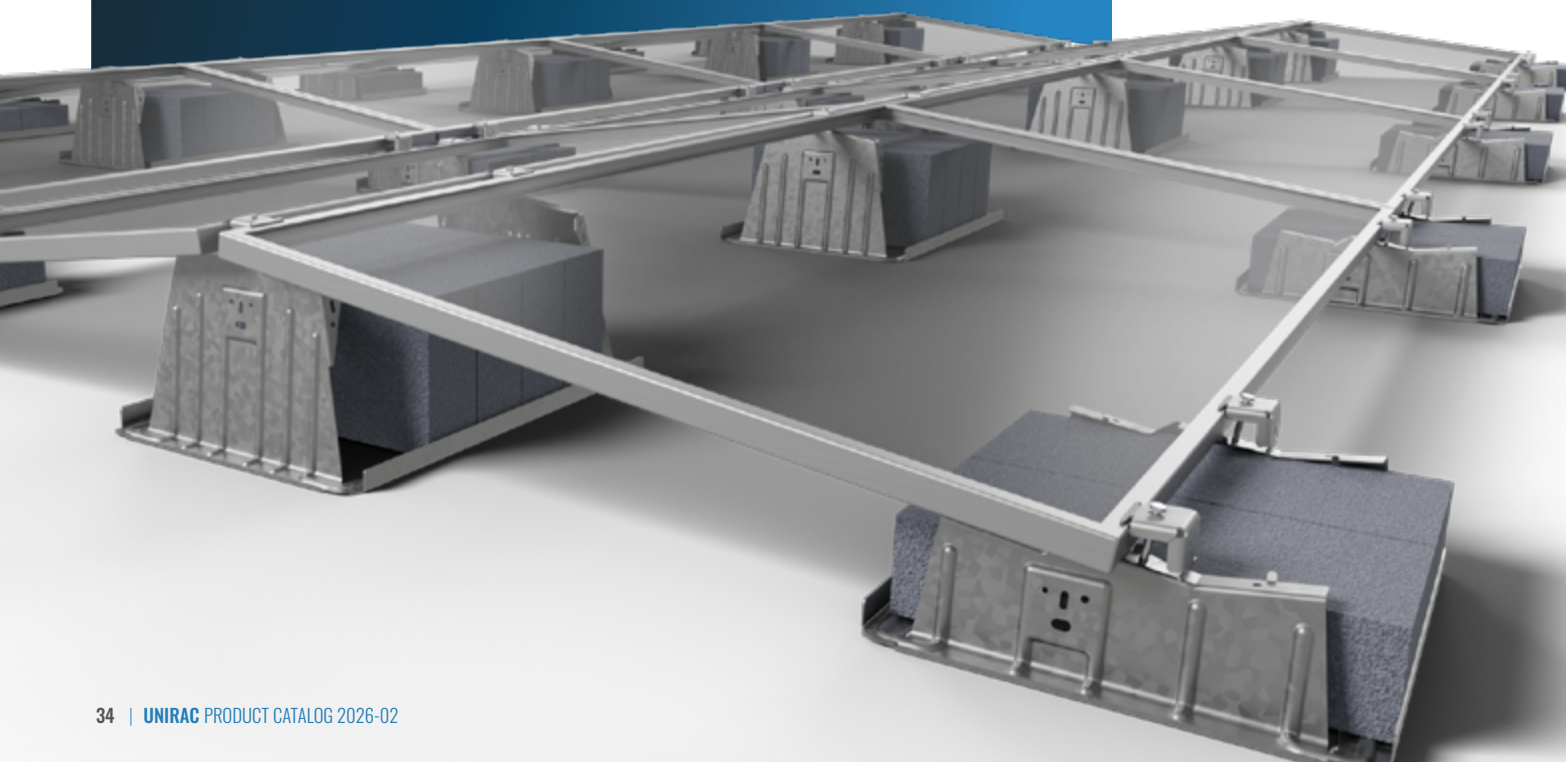
APPLICATION



SCAN TO SEE
PRODUCT BROCHURE

Maximize energy density and minimize cost with RMDT™, UNIRAC's ballasted dual tilt flat roof mounting system.

Fewer components, single tool installation, snap-in hardware, and integrated bonding ensure high speed installation, while optional roof attachment, MLPE mount, and wire management provide a complete solution.



BALLAST BAYS



ROOFMOUNT™ RMDT - BALLAST BAYS

PART NUMBER	DESCRIPTION	PACK SIZE	PRICE*
310801	RMDT RIDGE BAY	150	\$ 42.91
310802	RMDT VALLEY BAY	200	\$ 38.40
310804	RMDT RIDGE BAY, PVC	150	\$ 55.62
310805	RMDT VALLEY BAY, PVC	200	\$ 44.81
✓ 310801-US	RMDT RIDGE BAY	150	\$48.14
✓ 310802-US	RMDT VALLEY BAY	200	\$43.81
✓ 310804-US	RMDT RIDGE BAY, PVC	150	\$61.29
✓ 310805-US	RMDT VALLEY BAY, PVC	200	\$48.85

CLAMPS



ROOFMOUNT™ RMDT - CLAMPS

310826	RMDT MIDCLAMP 32-35MM	20	\$4.02
310825	RMDT MIDCLAMP 36-40MM	20	\$4.02
310824	RMDT MIDCLAMP 41-45MM	20	\$4.05
310823	RMDT MIDCLAMP 46-50MM	20	\$4.01



ROOFMOUNT™ RMDT / RM5 - CLAMPS

COMPATIBLE WITH ROOFMOUNT™ RM5 - P. 30

310820	RM5/DT ENDCLAMP 30-40MM	20	\$4.48
310821	RM5/DT ENDCLAMP 41-45MM	20	\$4.58
310822	RM5/DT ENDCLAMP 46-50MM	20	\$4.47

ATTACHMENTS



ROOFMOUNT™ RMDT / RM5™ - ATTACHMENTS

COMPATIBLE WITH ROOFMOUNT™ RM5 - P. 30

310830	RM5/DT PVC ROOF FRICTION PATCH	500	\$0.81
310882	RM5/DT H-ATTACHMENT KIT	1	\$47.53

ADDITIONAL COMPONENTS

ATTACHMENTS

FLASHLOC® RM FLAT ROOF ATTACHMENT.....	59
--	----

E-BOSS

ROOFMOUNT™ RM5 / RMDT - WIRE MANAGEMENT CLIPS.....	66
MLPE MOUNT ASSY.....	66
MLPE TIGER CLIP.....	66
GROUND WEEBLUG #1.....	67
ILSCO LAY IN LUG.....	67
ENPHASE ENGAGE CABLE CLIP.....	68

ECOFOOT® 2+

FEATURES

- FLEXIBLE DESIGN, CONFIGURE IN 5-DEGREE PORTRAIT OR 10-DEGREE LANDSCAPE
- ONLY THREE SKUS; BASE, CLAMP AND WIND DEFLECTOR
- PRE-ASSEMBLED UNIVERSAL CLAMP FITS MODULES 30-50MM

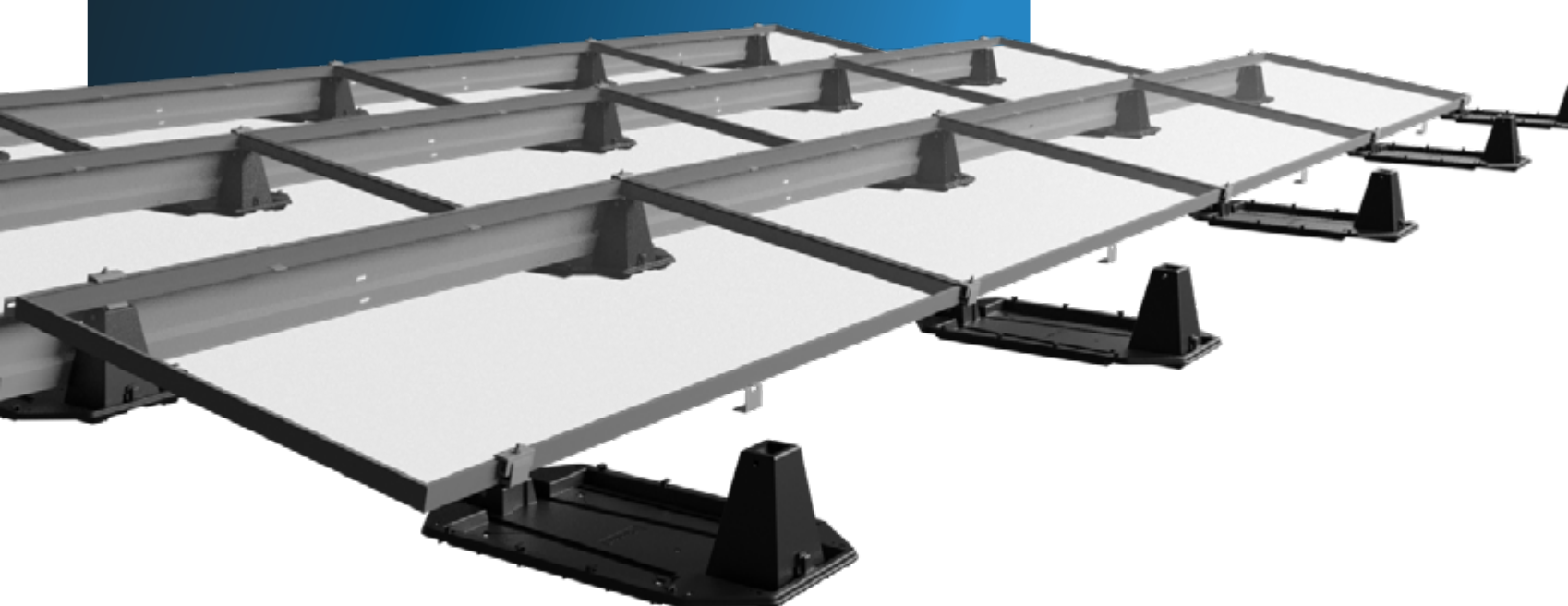


CONFORMS TO
UL 2703



SCAN TO SEE
PRODUCT BROCHURE

Installers choose ECOFOOT® 2+ for its speed, simplicity, and durability. The system features ready-to-go, pre-assembled components that make installation straightforward and efficient. With self-aligning bases, no PV panel preparation is required, and layout is as easy as snapping two chalk lines. Designed for ease of use, ECOFOOT® 2+ requires no special training and has a quick five-minute learning curve, making it a favorite among installers.



BAY



ECOFOOT® 2+ - BAY

PART NUMBER	DESCRIPTION	PACK SIZE	PRICE*
ES20207	ECOFOOT2+ BASE	300	\$30.56
✓ ES20142	ECOFOOT2+ BASE W/ EPDM STRIPS	300	\$36.29
✓ ES20142-US	ECOFOOT2+ BASE W/ EPDM STRIPS	300	\$43.15
✓ ES20207-US	ECOFOOT2+ BASE	300	\$36.93

CLAMPS



ECOFOOT® 2+ - CLAMPS

ES10466	ECOFOOT UNIVERSAL CLAMP KIT	48	\$ 24.76
ES11203	ECOFOOT2+ MID-SUPPORT KIT	48	\$ 6.09

WIND DEFLECTOR



ECOFOOT® 2+ - WIND DEFLECTOR

ES20311A	ECOFOOT2+ 44" WIND DEFLECTOR	300	\$11.41
ES20311I	ECOFOOT2+ 55" WIND DEFLECTOR	300	\$14.56
ES20311B	ECOFOOT2+ 70" WIND DEFLECTOR	300	\$18.15
ES20311C	ECOFOOT2+ 82" WIND DEFLECTOR	300	\$21.26
ES20311H	ECOFOOT2+ 86" WIND DEFLECTOR	300	\$23.03
ES20311K	ECOFOOT2+ 92" WIND DEFLECTOR	300	\$24.15
✓ ES20311B-US	ECOFOOT2+ 70" WIND DEFLECTOR	300	\$19.48
✓ ES20311C-US	ECOFOOT2+ 82" WIND DEFLECTOR	300	\$21.86
✓ ES20311K-US	ECOFOOT2+ 92" WIND DEFLECTOR	300	\$28.60
✓ ES20311A-US	ECOFOOT2+ 44" WIND DEFLECTOR	300	\$12.22
✓ ES20311H-US	ECOFOOT2+ 86" WIND DEFLECTOR	300	\$27.02

HARDWARE



ECOFOOT® 2+ - BONDING HARDWARE

ES10378	ECOFOOT BONDING JUMPER 38"	5	\$10.69
ES20548	SPLICE CLEVIS 4 HOLES	10	\$58.77

ADDITIONAL ECOFOOT® 2+ COMPONENTS

E-BOSS

RAYTRAY BASE, 6"	67
RAYTRAY CAP 96"	67
RAYTRAY TRAY, 96"	67
RAYTRAY RIVET	67
ECOFOOT MLPE BRACKET	68
ECOMOUNT 1 INVERTER KIT	68
ECOMOUNT 2 INVERTER KIT	68

ECOFOOT® 5D

FEATURES

- SIMPLE, PRE-ASSEMBLED PARTS
- SELF-ALIGNING BASES FALL IN LINE AS MODULES ARE PLACED
- LOW-EFFORT ROOF LAYOUT, JUST TWO CHALK LINES REQUIRED
- NO PV PANEL PREP, NONSTOP INSTALL FROM BOX TO ROOF
- SIX SIMPLE INSTALLATION STEPS
- NO TRAINING REQUIRED. 5-MINUTE LEARNING CURVE

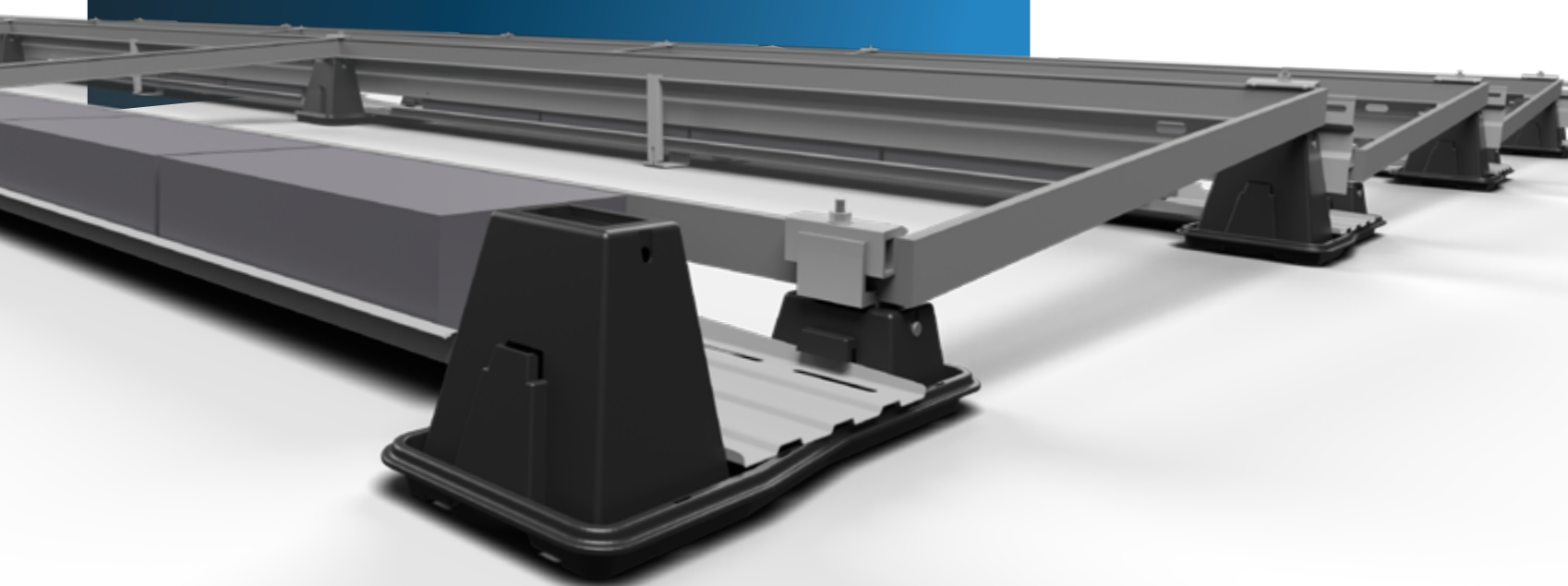


CONFORMS TO
UL 2703



SCAN TO SEE
PRODUCT BROCHURE

ECOFOOT® 5D is the high-density 5° flat roof racking system built on the trusted EcoFoot® modular platform. With just five simple components and a seamless six-step install, ECOFOOT® 5D delivers 18.4% more power than traditional 10° systems. Its pre-assembled parts, compact base design, and self-aligning layout make it the simplest way to maximize energy on tight or complex rooftops.



BAY AND MID SUPPORT



ECOFOOT® 5D - **BAY** Ⓞ WHILE SUPPLIES LAST

PART NUMBER	DESCRIPTION	PACK SIZE	PRICE*
ES10490	ECOFOOT5D BASE	340	\$ 11.62
ES10490-US	ECOFOOT5D BASE	340	\$ 12.18

BALLAST TRAY



ECOFOOT® 5D - **MID SUPPORT** Ⓞ WHILE SUPPLIES LAST

ES10480	ECOFOOT5D MID-SUPPORT KIT	24	\$5.06
---------	---------------------------	----	--------

ECOFOOT® 5D - **BALLAST** Ⓞ WHILE SUPPLIES LAST

ES10486	ECOFOOT5D 71" BALLAST TRAY	250	\$32.07
ES10488	ECOFOOT5D 83" BALLAST TRAY	250	\$37.36
ES11023	ECOFOOT5D 87" BALLAST TRAY	250	\$39.28
ES11025	ECOFOOT5D 93.25" BALLAST TRAY	250	\$44.19
ES10486-US	ECOFOOT5D 71" BALLAST TRAY	250	\$35.23
ES10488-US	ECOFOOT5D 83" BALLAST TRAY	250	\$40.62
ES11023-US	ECOFOOT5D 87" BALLAST TRAY	250	\$46.42
ES11025-US	ECOFOOT5D 93.25" BALLAST TRAY	250	\$53.66

WIND DEFLECTOR



ECOFOOT® 5D - **WIND DEFLECTOR** Ⓞ WHILE SUPPLIES LAST

ES10494	ECOFOOT5D 70" WIND DEFLECTOR	100	\$12.65
ES10496	ECOFOOT5D 82" WIND DEFLECTOR	100	\$14.76
ES11024	ECOFOOT5D 86" WIND DEFLECTOR	100	\$15.26
ES11026	ECOFOOT5D 92.25" WIND DEFLECTOR	800	\$17.18
ES10494-US	ECOFOOT5D 70" WIND DEFLECTOR	100	\$13.68
ES10496-US	ECOFOOT5D 82" WIND DEFLECTOR	100	\$15.96
ES11024-US	ECOFOOT5D 86" WIND DEFLECTOR	100	\$18.07
ES11026-US	ECOFOOT5D 92.25" WIND DEFLECTOR	800	\$20.49

ATTACHMENTS



ECOFOOT® 5D - **ATTACHMENTS**

ES10843	ECOFOOT ROOF TO STRUT HDWR KIT	24	\$19.23
ES10844	ECOFOOT STRUT TO MOD HDWR KIT	24	\$21.21
ES10851	ECOFOOT STRUT TO MOD KIT 30MM	24	\$17.58
ES20501	B22 GALVANIZED STRUT 10'	1	\$95.54

ADDITIONAL COMPONENTS ECOFOOT® 5D

ATTACHMENTS

FLASHLOC® RM FLAT ROOF ATTACHMENT 59

E-BOSS

MLPE TIGER CLIP 66

RAYTRAY BASE, 6" 67

RAYTRAY CAP 96" 67

RAYTRAY TRAY, 96" 68

RAYTRAY RIVET 68

ECOMOUNT 1 INVERTER KIT 68

ECOMOUNT 2 INVERTER KIT 68

ECOFOOT MLPE BRACKET 68

HEYCO SUNRUNNER 2-S CLIP 100/B 68

HEYCO SUNRUNNER 4-2U CLIP 100/B 68

HEYCO SUNRUNNER CLIP 100/B 68

HEYCO SUNRUNNER 4 CLIP 100/B 68

SINGLE TRUNK CABLE CLIP 68

GROUND FIXED TILT™

FEATURES

- KITTED HARDWARE, PRE-ASSEMBLED BRACES AND INTEGRATED BONDING
- PRE-ENGINEERED DESIGNS MEET CODE REQUIREMENTS, SAVING TIME DURING PERMITTING APPROVALS



CONFORMS TO
UL 2703



APPLICATION







SCAN TO SEE
PRODUCT BROCHURE

Unirac's GROUND FIXED TILT™ (GFT) system is a pre-engineered, single-post solution designed to simplify ground mount projects of any scale. With 20° and 30° tilt options and compatibility with all large-format modules, GFT uses standardized, lightweight components that are in stock and ready to ship from North America's largest distribution network. Backed by industry-leading project support and a 25-year warranty, GFT delivers speed, strength, and system flexibility, from permitting to installation.

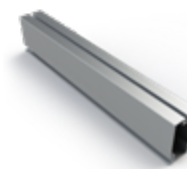
PILES






GROUND FIXED TILT™ - C-PILES

PART NUMBER	DESCRIPTION	PACK SIZE	PRICE*	COLOR
404001	GFT C-PILE, 12.5'	30	\$235.14	
404002	GFT C-PILE, 15'	30	\$283.24	
404004	GFT C-PILE, 10.5'	30	\$204.26	
 404001-US	GFT C-PILE, 12.5'	30	\$246.90	
 404002-US	GFT C-PILE, 15'	30	\$297.40	
 404004-US	GFT C-PILE, 10.5'	30	\$214.47	

RAIL








GROUND FIXED TILT™ - RAIL

411168M	GFT RAIL 168" MILL	60	\$77.33	
411246M	GFT RAIL 246" MILL	60	\$103.44	
 411168M-US	GFT RAIL 168" MILL	60	\$84.05	
 411246M-US	GFT RAIL 246" MILL	60	\$112.09	

COMPONENTS





GROUND FIXED TILT™ - COMPONENTS

404013	GFT ASSEMBLY HARDWARE 4-RAIL KIT	30	\$33.83	
404014	GFT RAIL SPLICE KIT	60	\$17.35	
404020	GFT RAIL SUPPLEMENTAL HDWR 4-RAIL	1	\$25.41	
404031	GFT DIAGONAL BRACE ASSEMBLY 20D SR	30	\$114.91	
404032	GFT DIAGONAL BRACE ASSEMBLY 30D SR	30	\$114.91	
404034	GFT ASSEMBLY HARDWARE 3-RAIL KIT	30	\$24.99	
404037	GFT TOP CHORD CHANNEL 20/30, LGFMT	30	\$119.46	
 404014-US	GFT RAIL SPLICE KIT	60	\$17.35	
 404031-US	GFT DIAGONAL BRACE ASSEMBLY 20D SR	30	\$120.66	
 404032-US	GFT DIAGONAL BRACE ASSEMBLY 30D SR	30	\$120.66	
 404037-US	GFT TOP CHORD CHANNEL 20/30, LGFMT	30	\$139.47	


E-BOSS



GROUND FIXED TILT™ - WIRE MANAGEMENT

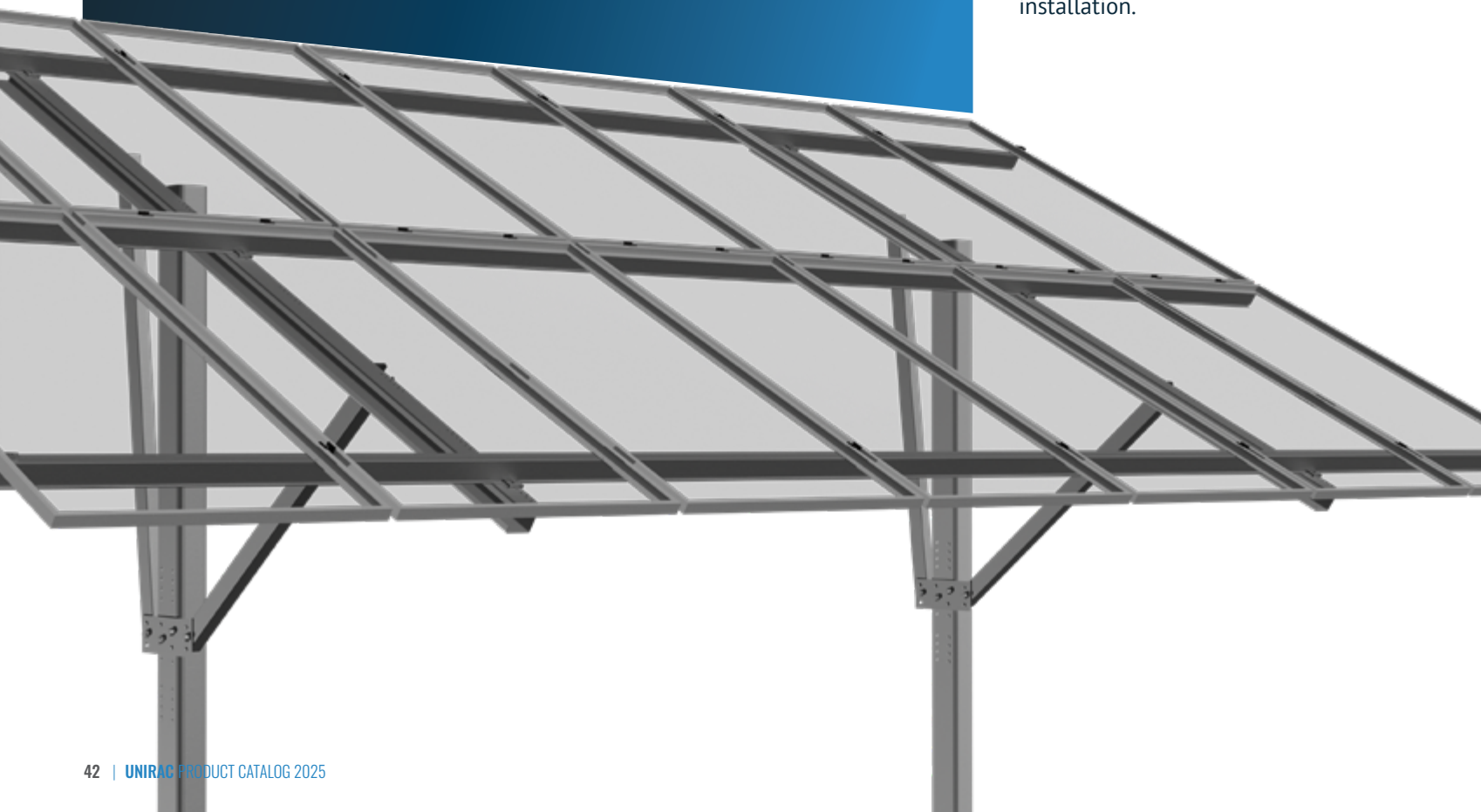
404015	GFT WIRE MANAGEMENT CLIP	100	\$4.10	
 404015-US	GFT WIRE MANAGEMENT CLIP	100	\$4.08	

GROUND FIXED TILT™ - ACCESSORIES

GFT-CAP	GFT RAIL END CAP, UV-BLK	100	\$ 1.71	
---------	--------------------------	-----	---------	---

U-LUG GROUNDING LUG - GO TO PAGE 67

NEW U-LUG	EBOSS GROUNDING & BONDING		\$4.71	
------------------	---------------------------	--	--------	---



UNIRAC LARGE ARRAY™

FEATURES

- EXTREME SITE VERSATILITY, PERFORMS ON UNEVEN, ROCKY, OR SLOPED GROUND
- SUPPORTS ANY SCALE, WITH NO LIMIT ON SYSTEM SIZE
- COMPATIBLE WITH SCHEDULE 40 OR 80 STEEL PIPE, NO CUSTOM MATERIALS NEEDED



CONFORMS TO
UL 2703



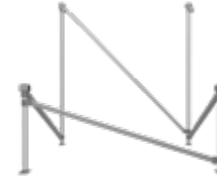
APPLICATION






SCAN TO SEE
PRODUCT BROCHURE

UNIRAC LARGE ARRAY™, supports a wider range of site and climatic challenges than any other PV structure on the market. Unirac Large Array aluminum components merge with SOLARMOUNT® and GFT rails and installer-supplied steel pipe to form durable, rigid truss structures that can accommodate uneven, rocky, or sloping terrain. Modular design and project flexibility is only limited by the size of the ground site.

BRACE






UNIRAC LARGE ARRAY™ - BRACE

PART NUMBER	DESCRIPTION	PACK SIZE	PRICE*	COLOR
403201C	ULA BRACE, 2"@ 10.5 FT,	100	\$69.29	
403202C	ULA BRACE, 2"@ 14 FT,	100	\$92.08	
403200C	ULA BRACE, 2"@ 7 FT,	100	\$48.48	
 403202C-US	ULA BRACE, 2"@ 14 FT,	100	\$83.71	
 403201C-US	ULA BRACE, 2"@ 10.5 FT,	100	\$69.29	
 403200C-US	ULA BRACE, 2"@ 7 FT,	100	\$92.08	

CAPS





UNIRAC LARGE ARRAY™ - CAPS / 2-INCH SCHEDULE 40/80 PIPE

403211C	ULA FRONT CAP, 2", AL	384	\$30.35	
403214C	ULA REAR CAP, 2", AL	384	\$32.08	
 403211C-US	ULA FRONT CAP, 2", AL	384	\$30.35	
 403214C-US	ULA REAR CAP, 2", AL	384	\$32.08	

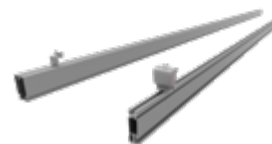
SLIDER & BRACKET





UNIRAC LARGE ARRAY™ - SLIDER / 2-INCH SCHEDULE 40/80 PIPE

403215C	ULA SLIDER, 2", AL	1	\$14.33	
 403215C-US	ULA SLIDER, 2", AL	1	\$14.33	

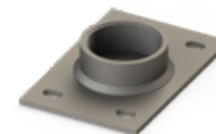
RAILS





UNIRAC LARGE ARRAY™ - RAILS

310132C	SM RAIL 132" CLR	144	\$56.10	
310168C	SM RAIL 168" CLR	144	\$71.40	
310168D	SM RAIL 168" DRK	144	\$79.82	
310246C	SM RAIL 246" CLR	144	\$104.55	
310246D	SM RAIL 246" DRK	144	\$119.89	 
320246M	SM RAIL 246" MILL	144	\$92.02	
310185D	SM RAIL 185" DRK	144	\$90.20	
320185M	SM RAIL 185" MILL	144	\$70.26	

ATTACHMENT



UNIRAC LARGE ARRAY™ - ATTACHMENT

403216S	ULA THREADED FOOT, 2", STL	1	\$35.52	
 403216S-US	ULA THREADED FOOT, 2", STL	1	\$35.52	



ATTACHMENTS

PITCHED ROOF

SOLARMOUNT® BUTYL
STRONGHOLD™ BUTYL
NXT® ADJUSTABLE TILT LEGS
SM® ADJUSTABLE TILT LEGS
FLASHLOC®

FLASHKIT PRO® & SB
STANDOFF
L-FEET
FLASHKIT TILE
SOLARHOOKS™

FLAT ROOF

FLASHLOC® CONCRETE ANCHOR
FLASHLOC® RM



SOLARMOUNT® BUTYL

Unirac's SOLARMOUNT® Butyl delivers a fast, reliable attachment optimized for the SOLARMOUNT® system. With a pre-applied butyl pad, there's no need for flashing—just peel, place, and fasten. The butyl material conforms to the hardware and the roof surface to create a durable, watertight seal. While designed for SOLARMOUNT®, it's compatible with any rail system.

COMPATIBILITY
- SOLARMOUNT®

APPLICATION

CERTIFICATION CONFORMS TO
UL 2703A



PART NUMBER	004BUTYLD
DESCRIPTION	SOLARMOUNT BUTYL ATT KIT #14S DARK
PACK SIZE	20
PRICE*	\$15.56
COLOR	

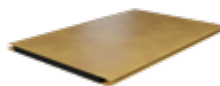


PART NUMBER	004BUTYLM
DESCRIPTION	SOLARMOUNT BUTYL ATT KIT #14S MILL
PACK SIZE	20
PRICE*	\$12.89
COLOR	
KIT INCLUDES	- ONE (1) Butyl Attachment - ONE (1) 3/8 T-Bolt & Nut - TWO (2) #14 Screws with Sealing Washer for Rafter Mounting

SOLD SEPARATELY: EXTRA #14 SCREWS AND BUTYL PADS



PART NUMBER	003251W
DESCRIPTION	DTD #14 3IN SELF-DRILL SCREW
PACK SIZE	560
PRICE*	\$1.12 (unit price)
COLOR	



PART NUMBER	XTRABUTL-SH
DESCRIPTION	EXTRA BUTYL PAD - SH, KIT
PACK SIZE	30
PRICE*	\$2.33 (unit price)
COLOR	



DOMESTIC SOLUTION - SOLARMOUNT® - BUTYL

PART NUMBER	DESCRIPTION	PACK SIZE	PRICE	COLOR
004BUTYLM-US	SOLARMOUNT BUTYL ATT KIT #14S MILL	20	\$15.41	
004BUTYLD-US	SOLARMOUNT BUTYL ATT KIT #14S DARK	20	\$17.30	
XTRABUTL-SH-US	EXTRA BUTYL PAD-SH, KIT	30	\$2.21	



SCAN TO SEE
PRODUCT BROCHURE



STRONGHOLD™ BUTYL

Unirac's STRONGHOLD™ Butyl is purpose-built for the NXT UMount® system, delivering a fast and easy roof attachment installation. The pre-applied butyl pad eliminates the need for flashing—just peel, place, and fasten. The butyl conforms to hardware and the roof surface to create a strong, watertight seal with no extra steps.

COMPATIBILITY
- NXT UMount®

APPLICATION

CERTIFICATION CONFORMS TO
UL 2703A



PART NUMBER	SHBUTYLD2
DESCRIPTION	STRONGHOLD BUTYL ATT KIT #14S DARK
PACK SIZE	20
PRICE*	\$13.93
COLOR	

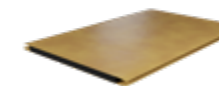


PART NUMBER	SHBUTYLM2
DESCRIPTION	STRONGHOLD BUTYL ATT KIT #14S M
PACK SIZE	20
PRICE*	\$12.36
COLOR	
KIT INCLUDES	- ONE (1) Butyl Attachment - ONE (1) NXT Rail Clamp - TWO (2) #14 Screws with Sealing Washer for Rafter Mounting

SOLD SEPARATELY: EXTRA #14 SCREWS AND BUTYL PADS



PART NUMBER	003251W
DESCRIPTION	DTD #14 3IN SELF-DRILL SCREW
PACK SIZE	560
PRICE*	\$1.12 (unit price)
COLOR	



PART NUMBER	XTRABUTL-SH
DESCRIPTION	EXTRA BUTYL PAD - SH, KIT
PACK SIZE	30
PRICE*	\$2.33 (unit price)
COLOR	



DOMESTIC SOLUTION - SOLARMOUNT® - BUTYL

PART NUMBER	DESCRIPTION	PACK SIZE	PRICE	COLOR
SHBUTYLD2-US	STRONGHOLD BUTYL ATT KIT #14S DARK	20	\$14.42	
SHBUTYLM2-US	STRONGHOLD BUTYL ATT KIT #14S MILL	20	\$13.46	
XTRABUTL-SH-US	EXTRA BUTYL PAD-SH, KIT	30	\$2.21	



SCAN TO SEE
PRODUCT BROCHURE



APPLICATION

COMPATIBILITY
- NXT UMOUNT®

CERTIFICATION CONFORMS TO
UL 2703

CONFORMS TO
UL 3741



NXT ADJUSTABLE TILT LEGS

Unirac ADJUSTABLE TILT LEGS provide a fully adjustable 10°–30° tilt using just two legs, with complete kits that include front foot, rear leg, and all hardware. Install options include flashless butyl for a fast, watertight seal, or universal L-foot compatibility for use with third-party attachments. Designed for shingle, low-slope, flat, and metal roofs, Adjustable Tilt Legs require no ballast, are UL 2703 certified for nationwide compliance, and are available in U-Builder for streamlined planning. Offered in two sizes—12" (8–12") and 30" (18–30")—they deliver versatility, speed, and code-compliant performance on any roof.

NXT UMOUNT® - ADJUSTABLE TILT LEGS

PART NUMBER	DESCRIPTION	PACK SIZE	PRICE*	COLOR
NUTILTLEG30	NXT ADJ TILT KIT, 30", W/HDW	10	\$49.14	MILL
NUTILTLEG12	NXT ADJ TILT KIT, 12", W/HDW	10	\$44.18	
KIT INCLUDES	- TWO (2) Tilt L-Plates - ONE (1) L-Foot - ONE (1) Adjustable Leg Assembly - TWO (2) NXT Rail Clamps - All Hardware to Build the Tilt Kit			
NUBTILT12	NXT ADJ TILT KIT, 12", BUTYL	20	\$43.90	MILL
NUBTILT30	NXT ADJ TILT KIT, 30", BUTYL	20	\$50.60	
KIT INCLUDES	- ONE (1) Tilt L-Plate - TWO (2) Butyl Attachments - TWO (2) #14 Screws with Sealing Washer for Rafter Mounting - ONE (1) Adjustable Leg Assembly - TWO (2) NXT Rail Clamps - All Hardware to Build the Tilt Kit			

SOLD SEPARATELY: FLASHLOC RM AND OTHER COMPATIBLE ROOF ATTACHMENTS - SEE PAGE 59
EXTRA #14 SCREWS AND BUTYL PADS - SEE PAGE 48



DOMESTIC SOLUTION - NXT UMOUNT® - ADJUSTABLE TILT LEGS

	NUTILTLEG12-US	NXT ADJ TILT KIT, 12", W/HDW	10	\$50.30	MILL
	NUTILTLEG30-US	NXT ADJ TILT KIT, 30", W/HDW	10	\$51.89	
	NUBTILT30-US	NXT ADJ TILT KIT, 30", BUTYL	20	\$53.13	
	NUTILTLEG12	NXT ADJ TILT KIT, 12", BUTYL	10	\$46.10	



SCAN TO SEE
PRODUCT BROCHURE



APPLICATION

COMPATIBILITY
- SOLARMOUNT®

CERTIFICATION CONFORMS TO
UL 2703

CONFORMS TO
UL 3741



SM ADJUSTABLE TILT LEGS

Unirac ADJUSTABLE TILT LEGS provide a fully adjustable 10°–30° tilt using just two legs, with complete kits that include front foot, rear leg, and all hardware. Install options include flashless butyl for a fast, watertight seal, or universal L-foot compatibility for use with third-party attachments. Designed for shingle, low-slope, flat, and metal roofs, Adjustable Tilt Legs require no ballast, are UL 2703 certified for nationwide compliance, and are available in U-Builder for streamlined planning. Offered in two sizes—12" (8–12") and 30" (18–30")—they deliver versatility, speed, and code-compliant performance on any roof.

SOLARMOUNT® - ADJUSTABLE TILT LEGS

PART NUMBER	DESCRIPTION	PACK SIZE	PRICE*	COLOR
SMTILTLEG12	SM ADJ TILT KIT, 12", W/HDW	10	\$41.52	MILL
SMTILTLEG30	SM ADJ TILT KIT, 30", W/HDW	10	\$44.26	
KIT INCLUDES	- TWO (2) Tilt L-Plates - ONE (1) L-Foot - ONE (1) Adjustable Leg Assembly - TWO (2) 3/8 T-Bolts & Nuts - All Hardware to Build the Tilt Kit			
307120M	SM ADJ TILT LEG, 44", W/HDW	1	\$54.76	MILL
307134M	SM ADJ TILT LEG, 72", W/HDW	1	\$74.40	
KIT INCLUDES	- ONE (1) L-Foot - ONE (1) Adjustable Leg Assembly - ONE (1) 3/8 T-Bolt & Nut - All Hardware to Build the Tilt Kit			
SMBTILT12	SM ADJ TILT KIT, 12", BUTYL	20	\$42.70	MILL
SMBTILT30	SM ADJ TILT KIT, 30", BUTYL	20	\$48.70	
KIT INCLUDES	- ONE (1) Tilt L-Plate - TWO (2) Butyl Attachments - TWO (2) #14 Screws with Sealing Washer for Rafter Mounting - ONE (1) Adjustable Leg Assembly - TWO (2) 3/8 T-Bolts & Nuts - All Hardware to Build the Tilt Kit			

SOLD SEPARATELY: FLASHLOC RM AND OTHER COMPATIBLE ROOF ATTACHMENTS - SEE PAGE 59
EXTRA #14 SCREWS AND BUTYL PAD - SEE PAGE 48



DOMESTIC SOLUTION - SOLARMOUNT® - ADJUSTABLE TILT LEGS

	SMTILTLEG12-US	SM ADJ TILT KIT, 12", W/HDW	10	\$46.61	MILL
	SMTILTLEG30-US	SM ADJ TILT KIT, 30", W/HDW	10	\$49.38	
	307004M-US	SM FIXD TILT LEG, 5IN 10 DEG	20	\$5.48	
	307006M-US	SM RAISED TILT LEG, 8.5IN 5DEG	20	\$9.04	
	307012M-US	SM FIXD TILT LEG, 11IN 10 DEG	20	\$9.14	
	307014M-US	SM RAISED TILT LEG, 13IN 5DEG	20	\$10.13	
KIT INCLUDES	- ONE (1) Fixed Tilt Leg / - ONE (1) 3/8 T-Bolt & Nut				
	SMBTILT12-US	SM ADJ TILT KIT, 12", BUTYL	20	\$44.84	
	SMBTILT30-US	SM ADJ TILT KIT, 30", BUTYL	20	\$51.14	

*Prices are subject to change without notice. For detailed product information including current pricing, dimensions, pallet qty's and UPC, refer to the Q1 2026 Unirac Price List. All prices are per unit. Pack Size reflects the minimum order quantity.



FLASHLOC®

FLASHLOC® COMP is one of the fastest, cleanest ways to mount solar on composition shingle and rolled comp roofs. This all-in-one solution eliminates the need for metallic flashing or pulling nails. Just drive the lag bolt and inject sealant to form a permanent, water-resistant pressure seal.

APPLICATION

CERTIFICATION CONFORMS TO
UL 2703
CONFORMS TO
UL 2703A



FLASHLOC® COMP

PART NUMBER	004085D
DESCRIPTION	FLASHLOC COMP KIT DRK
PACK SIZE	20
PRICE*	\$16.87
COLOR	



PART NUMBER	004085M
DESCRIPTION	FLASHLOC COMP KIT MILL
PACK SIZE	20
PRICE*	\$14.96
COLOR	

- KIT INCLUDES
- ONE (1) Flashloc Attachment
 - ONE (1) 3/8 T-Bolt & Nut
 - ONE (1) 5/16 Lag Bolt with Sealing Washer
 - Tube Sealant



FLASHLOC® DUO

PART NUMBER	004275D
DESCRIPTION	FLASHLOC DUO DARK
PACK SIZE	20
PRICE*	\$12.60
COLOR	

SOLD SEPARATELY:

DIRECT-TO-DECK SCREWS

PART NUMBER	003251W
DESCRIPTION	DTD #14 3IN SELF-DRILL SCREW
PACK SIZE	560
PRICE*	\$1.12 (unit price)
COLOR	



SCAN TO SEE
+ PRODUCT INFO

FLASHKIT SWITCHBLADE



FLASHKIT PRO®



SHED & SEAL TECHNOLOGY

APPLICATION

CERTIFICATION CONFORMS TO
UL 2703



SCAN TO SEE
PRODUCT BROCHURE

FLASHKIT PRO® FLASHKIT SWITCHBLADE

FLASHKIT PRO® and FLASHKIT SWITCHBLADE (SB) offer complete attachment solutions for composition shingle roofs. Featuring Unirac's patented SHED & SEAL technology, a weatherproof system which provides the ultimate protection against roof leaks. This trusted water seal technology for composition shingle roofs is now available in standard width and in a more compact option.

FLASHKIT SWITCHBLADE

PART NUMBER	004015D
DESCRIPTION	FLASHKIT SB, DARK
PACK SIZE	10
PRICE*	\$14.21
COLOR	

PART NUMBER	004015M
DESCRIPTION	FLASHKIT SB, MILL
PACK SIZE	10
PRICE*	\$12.17
COLOR	

- KIT INCLUDES
- ONE (1) L-Foot with Grommet
 - ONE (1) 3/8 T-Bolt & Nut
 - ONE (1) 5/16 Lag Bolt with Sealing Washer
 - ONE (1) Flashing

FLASHKIT PRO®

PART NUMBER	004055D
DESCRIPTION	FLASHKIT PRO, DRK 10PK
PACK SIZE	10
PRICE*	\$16.52
COLOR	

PART NUMBER	004055M
DESCRIPTION	FLASHKIT PRO, MILL 10PK
PACK SIZE	10
PRICE*	\$14.51
COLOR	

- KIT INCLUDES
- ONE (1) L-Foot with Grommet
 - ONE (1) 3/8 T-Bolt & Nut
 - ONE (1) 5/16 Lag Bolt with Sealing Washer
 - ONE (1) Flashing

*Prices are subject to change without notice. For detailed product information including current pricing, dimensions, pallet qty's and UPC, refer to the Q1 2026 Unirac Price List. All prices are per unit. Pack Size reflects the minimum order quantity.



UNIRAC STANDOFFS

Unirac STANDOFFS provide reliable clearance and waterproofing for solar installations on tile, comp, flat, and metal roofs. Available in multiple lengths, they adapt to any roof type or new construction project while preserving roof integrity. Strong, simple, and USA-made, they ensure lasting performance.

SOLARMOUNT® - **STANDOFF** ⌚ WHILE SUPPLIES LAST

PART NUMBER	DESCRIPTION	PACK SIZE	PRICE*	COLOR
330007M	3/8 BOLT/WASHER TO AL STANDOFF	24	\$3.40	
⌚ 004300D	STANDOFF 3" 2 PIECE AL, DRK	24	\$12.32	DARK MILL
004300M	STANDOFF 3" 2 PIECE AL, MILL	24	\$11.73	
⌚ 004400D	STANDOFF 4" 2 PIECE AL, DRK	24	\$12.19	
004400M	STANDOFF 4" 2 PIECE AL, MILL	24	\$13.66	
⌚ 004600D	STANDOFF 6" 2 PIECE AL, DRK	24	\$14.07	
004600M	STANDOFF 6" 2 PIECE AL, MILL	24	\$16.84	
⌚ 004700D	STANDOFF 7" 2 PIECE AL, DRK	24	\$14.96	
004700M	STANDOFF 7" 2 PIECE AL, MILL	24	\$19.22	
NEW 004120M	STANDOFF 12" 2 PIECE AL, MILL	24	\$26.15	
KIT INCLUDES	- ONE (1) Stanchion - ONE (1) Stanchion Base - ONE (1) 3/8 Bolt & EPDM Washer			



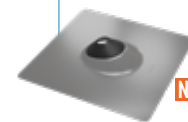
DOMESTIC SOLUTION - STANDOFF

✔ ⌚ 004300D-US	STANDOFF 3" 2 PIECE AL, DRK	24	\$11.72	DARK MILL
✔ 004300M-US	STANDOFF 3" 2 PIECE AL, MILL	24	\$13.51	
✔ ⌚ 004400D-US	STANDOFF 4" 2 PIECE AL, DRK	24	\$12.90	
✔ 004400M-US	STANDOFF 4" 2 PIECE AL, MILL	24	\$14.19	
✔ ⌚ 004600D-US	STANDOFF 6" 2 PIECE AL, DRK	24	\$15.10	
✔ 004600M-US	STANDOFF 6" 2 PIECE AL, MILL	24	\$18.28	
✔ ⌚ 004700D-US	STANDOFF 7" 2 PIECE AL, DRK	24	\$19.78	
✔ 004700M-US	STANDOFF 7" 2 PIECE AL, MILL	24	\$25.66	

SOLD SEPARATELY: FLASHINGS, LAG BOLTS, L-FOOT AND RAIL CONNECTIONS (T-BOLT OR RAIL CLAMPS)

FLASHINGS

PART NUMBER	DESCRIPTION	PACK SIZE	PRICE*	COLOR
004013C	FLASH SOFT AL 18X18 OATEY12836	12	\$15.69	MILL
NEW 004015C	FLASHING 9X12 OATEY 12920	12	\$8.82	



APPLICATION

COMPATIBILITY

- NXT UMOUNT®
- SOLARMOUNT®

CERTIFICATION CONFORMS TO **UL 2703**



SCAN TO SEE
PRODUCT BROCHURE



UNIRAC L-FEET

Unirac serrated L-Foot delivers a versatile, pre-assembled attachment solution designed for speed, strength, and flexibility across multiple roof types. Integrated bonding creates a reliable ground path without extra hardware, reducing labor and material costs. Compatible with third-party flashings, it offers flexible mounting options and a clean, professional installation.

UNIRAC - L-FEET



PART NUMBER	304001D
DESCRIPTION	L-FOOT SERRATED W/ T-BOLT, DRK
PACK SIZE	20
PRICE*	\$4.05
COLOR	DARK



PART NUMBER	304001C
DESCRIPTION	L-FOOT SERRATED W/ T-BOLT, MILL
PACK SIZE	20
PRICE*	\$3.85
COLOR	CLR

KIT INCLUDES - ONE (1) L-Foot
- ONE (1) 3/8 T-Bolt & Nut

INCLUDED WITH EVERY SOLARMOUNT® FIXED TILT LEGS KIT - SEE PAGE 51



DOMESTIC SOLUTION - L-FEET



✔ PART NUMBER	304001D-US
DESCRIPTION	L-FOOT SERRATED W/ T-BOLT, DRK
PACK SIZE	20
PRICE*	\$4.60
COLOR	DARK



✔ PART NUMBER	304001C-US
DESCRIPTION	L-FOOT SERRATED W/ T-BOLT, MILL
PACK SIZE	20
PRICE*	\$4.37
COLOR	CLR

APPLICATION

COMPATIBILITY

- NXT UMOUNT®
- SOLARMOUNT®

CERTIFICATION CONFORMS TO **UL 2703**



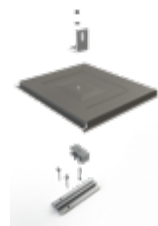


FLASHKIT TILE REPLACEMENT

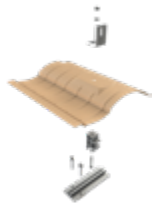
The complete tile replacement solution, FLASHKIT TR delivers 3x3 versatility in one system. A universal base with three height options pairs with your choice of three flashing shapes and three colors to blend seamlessly with any tile roof. Backed by Unirac's proven Water Seal technology, it ensures long-lasting leak protection. Pre-kitted in packs of 10, FLASHKIT TR has everything you need for fast, professional installations.

WHILE SUPPLIES LAST

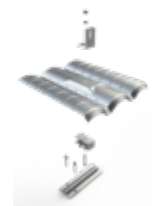
PART NUMBER	DESCRIPTION	PACK SIZE	PRICE*	COLOR
004TRFA	FLASHKIT TR FLAT-TILE ADOBE	10	\$39.16	ADOBE
004TRFD	FLASHKIT TR FLAT-TILE CHARCOAL	10	\$41.12	CHAR
004TRFM	FLASHKIT TR FLAT-TILE MILL	10	\$36.48	MILL



004TRSA	FLASHKIT TR SPAN-TILE ADOBE	10	\$37.48	ADOBE
004TRSD	FLASHKIT TR SPAN-TILE CHARCOAL	10	\$39.35	CHAR
004TRSM	FLASHKIT TR SPAN-TILE MILL	10	\$34.87	MILL



004TRWA	FLASHKIT TR W-TILE ADOBE	10	\$37.48	ADOBE
004TRWD	FLASHKIT TR W-TILE CHARCOAL	10	\$39.35	CHAR
004TRWM	FLASHKIT TR W-TILE MILL	10	\$34.87	MILL



- KIT INCLUDES**
- ONE (1) L-Foot with Grommet
 - ONE (1) 3/8 T-Bolt & Nut
 - ONE (1) Tile Replacement Flashing
 - ONE (1) Tiered Riser
 - ONE (1) Stainless Steel Riser Bolt with Anti-Seize
 - ONE (1) Base Plate w/ Butyl
 - TWO (2) 5/16 Lag Bolt with Sealing Washer

SOLD SEPARATELY: OPTIONAL SUB-FLASHINGS

004TRSF	TR UNIV SUB-FLASHING	50	\$6.76	DARK
---------	----------------------	----	--------	------



COMPATIBILITY

- SOLARMOUNT®
- NXT UMount®

APPLICATION



SCAN TO SEE
PRODUCT BROCHURE

SOLARHOOK UNIVERSAL



SOLARHOOKS™

SOLARHOOKS™ are engineered for strength and reliability, not cut from bent bar like standard tile hooks. Featuring patented POWERARCH technology, they deliver unmatched rigidity and durability. With precise welds, a clean oil-free finish, and guaranteed compatibility with Solarmount® and NXT UMount® systems.

WHILE SUPPLIES LAST

PART NUMBER	DESCRIPTION	PACK SIZE	PRICE*
004CT5H	SOLARHOOK UNIVERSAL	30	\$13.63
004CT5P	PERFORMANCE HOOK UNIVERSAL	30	\$12.37
004AST1	SOLARHOOK ADJ STONE COATED ST1	30	\$16.16
004AT1H	SOLARHOOK FLAT TILE	32	\$9.78
004CT1H	SOLARHOOK SPANISH 7" BASE	20	\$11.64
004CT2H	SOLARHOOK SPANISH 9" BASE	20	\$13.18
004FLAT	SOLARHOOK FLASHING FLAT	30	\$6.91
004FLCT	SOLARHOOK FLASHING SPANISH FLCT	30	\$10.28
004FLAT6IN	SOLARHOOK FLASH FLAT 6IN	30	\$4.71
004ST1S	SOLARHOOK STONE COATED MT ST1	32	\$11.28
035014C	HDW LAG BOLT, 1/4 X 3-1/2 SS	60	\$1.44



COMPATIBILITY

- NXT UMount®
- SOLARMOUNT®

APPLICATION



SCAN TO SEE
PRODUCT BROCHURE

ALL SOLARHOOKS™ COME WITH THE LAG BOLTS FOR RAFTER INSTALLATION.
SOLD SEPARATELY: NXT UMount® RAIL CLAMPS (SEE PAGE 5) OR SOLARMOUNT® T-BOLTS (SEE PAGE 10)

SOLARHOOKS™ - TILE FLASHINGS

004TFFM	TILE FLASHING FLAT MILL	30	\$12.57
004TFSM	TILE FLASHING SPANISH MILL	30	\$12.58
004TFWM	TILE FLASHING W MILL	30	\$12.58






NEW
FLASHLOC® CONCRETE ANCHOR

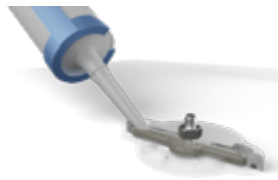
Engineered for concrete roof anchors, this sealing device delivers fast, precise, and mess-free installations. With a built-in sealant chamber and simple attach-and-seal process, it saves labor, eliminates dry time, and lets you install racking immediately.


APPLICATION 

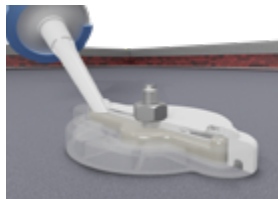
FLASHLOC® CONCRETE ANCHOR




PART NUMBER	004FLAN
DESCRIPTION	FLASHLOC ANCHOR SEALANT-FREE
PACK SIZE	20
PRICE*	\$10.20
COLOR	



PART NUMBER	004FLAN-R
DESCRIPTION	FLASHLOC ANCHOR REG SEALANT
PACK SIZE	20
PRICE*	\$11.03
COLOR	



PART NUMBER	004FLAN-S
DESCRIPTION	FLASHLOC ANCHOR FOR SILICONE
PACK SIZE	20
PRICE*	\$11.03
COLOR	

ROOF ANCHORS NOT INCLUDED. USERS ARE REQUIRED TO PROCURE APPROPRIATE ROOF ANCHORS INDEPENDENTLY.



SCAN TO SEE
PRODUCT BROCHURE




FLASHLOC® RM

Unirac's FLASHLOC® RM is a lightweight, durable, powder-coated cast aluminum roof attachment solution that provides fast, easy installation and helps save labor cost. FLASHLOC® RM is compatible with most roofing materials and is applicable for almost all solar racking form factors. Rigorous mechanical, sealing, and ease-of-install testing ensures a successful install and long-term reliability.

APPLICATION 

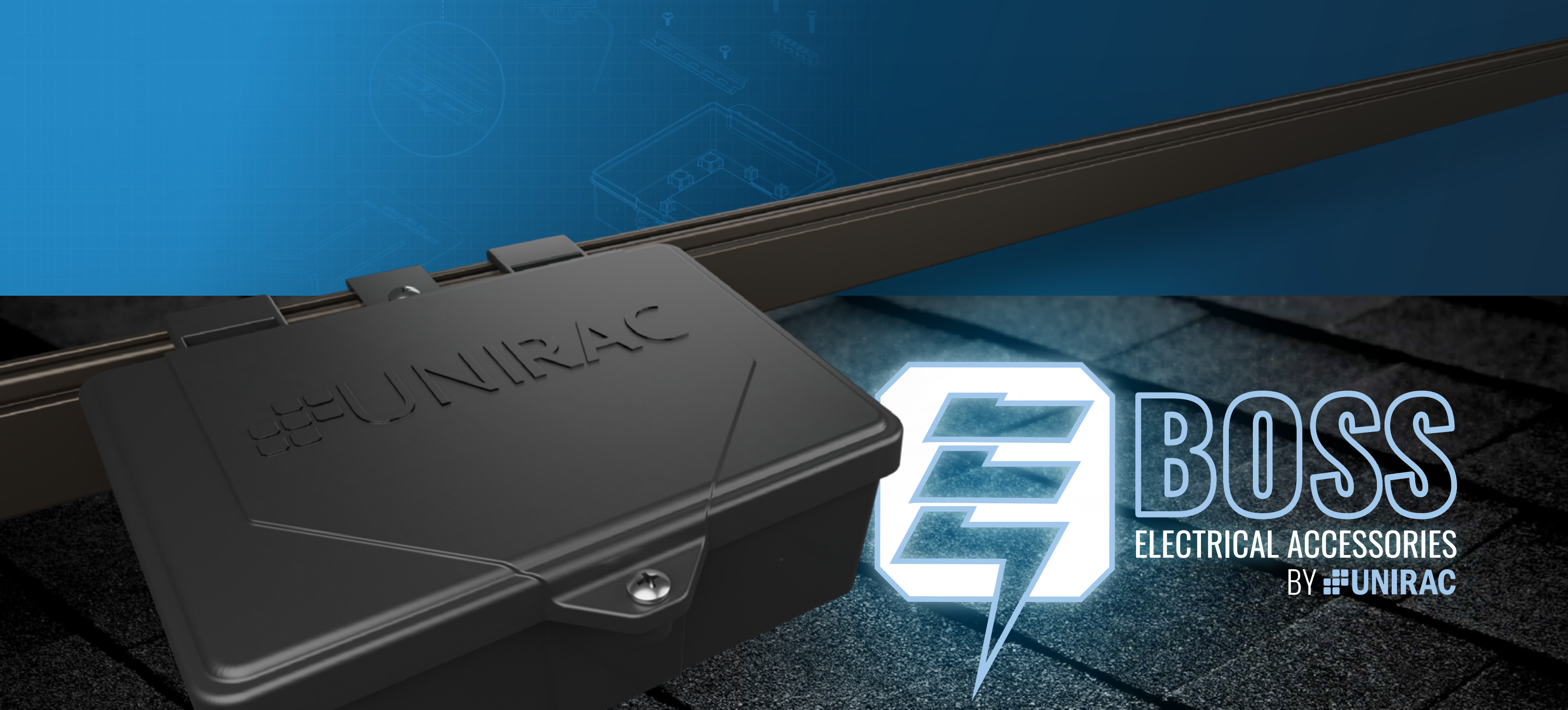
CERTIFICATION CONFORMS TO
UL 2703

PART NUMBER	DESCRIPTION	PACK SIZE	PRICE*	COLOR
310999	FLASHLOC RM	10	\$58.80	

ROOF ANCHORS NOT INCLUDED. USERS ARE REQUIRED TO PROCURE APPROPRIATE ROOF ANCHORS INDEPENDENTLY.



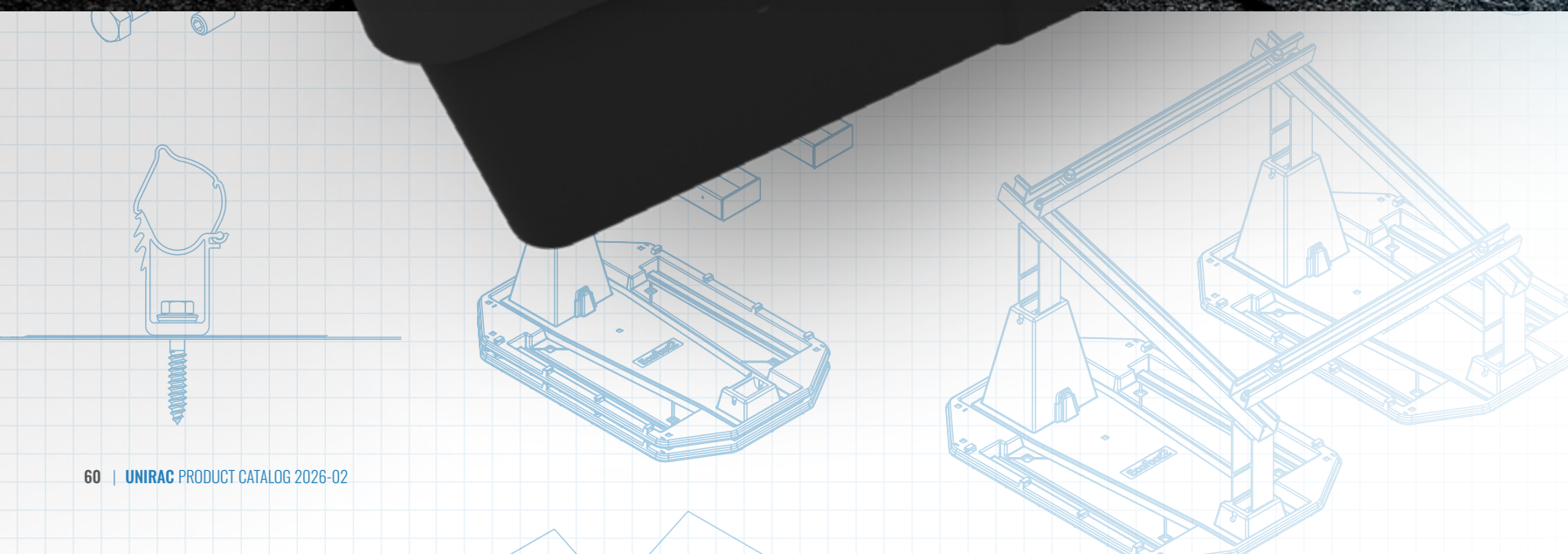
SCAN TO SEE
PRODUCT BROCHURE



UNIRAC

E BOSS

ELECTRICAL ACCESSORIES
BY UNIRAC



SOLOBOX® JUNCTION BOX
E-BOSS CONDUIT MOUNTS
GUARDIAN

MLPE, SM TRIM, RAY TRAY
WIRE MANAGEMENT
E-BOSS, RAYTRAY


GROUNDING & BONDING HARDWARE
ECOFOOT®
WIRE MANAGEMENT CLIPS



SOLOBOX[®] COMP THE ULTIMATE JUNCTION EXPERIENCE

SOLOBOX[®] COMP sets a new standard for junction box installation with proven Flashing technology, one-screw setup, and enhanced water protection—delivering faster, cleaner, and more reliable installs.



PART NUMBER	SBOXCOMP-D
DESCRIPTION	SOLOBOX JUNCTION BOX
PACK SIZE	8
PRICE*	\$29.34
COLOR	 DARK
KIT INCLUDES	<ul style="list-style-type: none"> - Pre-installed Din Rail - Pre-installed Ground Bar - FOUR (4) Decking Screws - ONE (1) Shingle Cut Template

APPLICATION 

CERTIFICATION CONFORMS TO **UL 1741**

SHED & SEAL TECHNOLOGY

SCAN TO SEE



+ PRODUCT INFO




HOW TO INSTALL VIDEO



SOLOBOX[®] RAIL THE ULTIMATE JUNCTION EXPERIENCE

SOLOBOX[®] RAIL delivers universal rail compatibility and streamlined installation to save time and resources. Featuring self-leveling clamps and simple single-screw access, it ensures long-term array performance while combining competitive pricing with reliable quality.



PART NUMBER	SBOXRAIL-D
DESCRIPTION	SOLOBOX COMP W/ DIN RAIL
PACK SIZE	8
PRICE*	\$24.26
COLOR	 DARK
KIT INCLUDES	<ul style="list-style-type: none"> - Pre-installed Din Rail - Pre-installed Ground Bar

APPLICATION  

CERTIFICATION CONFORMS TO **UL 1741**

SCAN TO SEE



PRODUCT BROCHURE



HOW TO INSTALL VIDEO



CONDUIT MOUNT BUTYL

CONDUIT MOUNT BUTYL delivers a streamlined setup with polymeric butyl protection and a hassle-free installation process. Its versatile design fits multiple conduit sizes and comes pre-assembled with all components kitted in one box, eliminating on-site delays and reducing labor time. An ideal choice for fast, watertight installs with proven durability and quality.

PART NUMBER	DESCRIPTION	PACK SIZE	PRICE*	COLOR
CMBTLM1	E-BOSS COND MT 3.0 W/ BUTL KIT	20	\$6.70	MILL
KIT INCLUDES		- Conduit Mount W/ Integrated Conduit Strap - Pre-applied Butyl Patch - ONE (1) Decking Screw		

APPLICATION

E-BOSS CONDUIT MOUNT 2.0 COMP KIT



PART NUMBER	00822CM
DESCRIPTION	E-BOSS COND MT 2.0 COMP KIT
PACK SIZE	10
PRICE*	\$16.17
COLOR	MILL
KIT INCLUDES	- Conduit Mount W/ Integrated Conduit Strap - ONE (1) Flashkit Switchblade Flashing - ONE (1) Decking Screw

E-BOSS TILE CONDUIT MOUNT KIT



PART NUMBER	00823CM
DESCRIPTION	E-BOSS TILE CONDUIT MT KIT
PACK SIZE	10
PRICE*	\$7.22
COLOR	MILL
KIT INCLUDES	- Conduit Mount W/ Integrated Conduit Strap - ONE (1) Universal Tile Mount Bracket - ONE (1) 1" Bolt and ONE (1) Wing Nut

SCAN TO SEE



PRODUCT BROCHURE

HOW TO INSTALL VIDEO

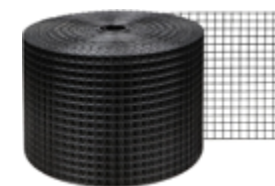


GUARDIAN™

GUARDIAN™ provides durable, long-lasting protection for pitched roof PV systems with an effortless, tool-free installation—just Clip, Cover, and Cap. The reusable metal clip and plastic cap allow easy adjustments and maintenance without the need for replacements. UV-resistant materials ensure lasting performance and color retention, while the flexible clip delivers a tight, secure fit. Designed for compatibility with all major pitched roof racking systems and solar modules, GUARDIAN is available with mesh fencing in 5", 6", and 8" sizes (sold separately).

PART NUMBER	DESCRIPTION	PACK SIZE	PRICE	COLOR
GUARD-CLP	GUARDIAN CLIP	20	\$2.33	DARK

APPLICATION



PART NUMBER	GUARD-M5
DESCRIPTION	GUARDIAN MESH 5IN
PACK SIZE	100FT
PRICE*	\$78.24
COLOR	DARK
PART NUMBER	GUARD-M6
DESCRIPTION	GUARDIAN MESH 6IN
PACK SIZE	100FT
PRICE*	\$93.75
COLOR	DARK

PART NUMBER	GUARD-M8
DESCRIPTION	GUARDIAN MESH 8IN
PACK SIZE	100FT
PRICE*	\$106.93
COLOR	DARK

SCAN TO SEE



PRODUCT BROCHURE

HOW TO INSTALL VIDEO

MLPE MOUNTS



MLPE MOUNT ASSY

PART NUMBER	DESCRIPTION	PACK SIZE	PRICE*	COLOR
008114M	MLPE MOUNT ASSY	10	\$3.09	MILL
MLPEMNT-US	UNIVERSAL MLPE MOUNT	10	\$3.89	MILL



MLPE TIGER CLIP

008115M	MLPE TIGER CLIP	48	\$7.42	MILL
---------	-----------------	----	--------	------

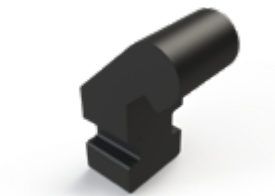
SOLARMOUNT® TRIM



SOLARMOUNT® TRIM WHILE SUPPLIES LAST

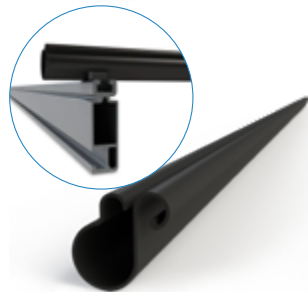
008025S	SM TRIM END CLIP	10	\$1.62	DARK
206072D-B	SM TRIM 168" DRK 8PK	8	\$109.25	DARK

E-BOSS WIRE MANAGEMENT



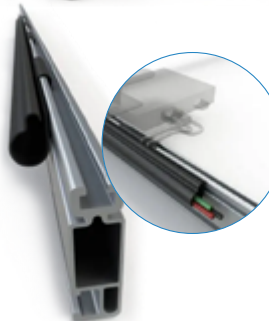
E-BOSS BRIDGE CLIP

00802BC	E-BOSS BRIDGE CLIP	200	\$0.58	DARK
---------	--------------------	-----	--------	------



E-BOSS BRIDGE TRAY

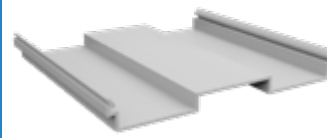
0802BT	E-BOSS BRIDGETRAY	20	\$6.42	DARK
--------	-------------------	----	--------	------



E-BOSS RAIL TRAY

00802RT	E-BOSS RAIL TRAY	40	\$4.17	MILL
---------	------------------	----	--------	------

RAYTRAY BASES



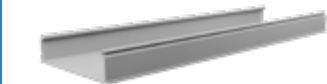
RAYTRAY HAF BASE 8"

PART NUMBER	DESCRIPTION	PACK SIZE	PRICE*	COLOR
RAYTV3HBASE	RAYTRAY V3 HALF BASE 8"	10		WHITE
RAYTV3BASE	RAYTRAY V3 BASE 8"	10	\$5.46	WHITE



RAYTRAY CAP 96"

RAYTV3CAP	RAYTRAY V3 CAP 96"	10	\$44.96	WHITE
-----------	--------------------	----	---------	-------



RAYTRAY TRAY 96"

RAYTV3TRAY	RAYTRAY V3 TRAY 96"	10	\$53.41	WHITE
------------	---------------------	----	---------	-------

RAYTRAY



RAYTRAY RIVET

RAYTV3RIV	RAYTRAY VR RIVETS	100	\$0.34	WHITE
-----------	-------------------	-----	--------	-------



RAYTRAY EDGING TOOL

RAYTV3TOOL	RAYTRAY V3 EDGING TOOL	1	\$13.31	WHITE
------------	------------------------	---	---------	-------



RAYTRAY END CAP

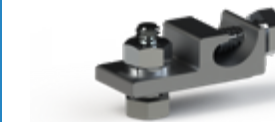
RAYTV3CAPE	RAYTRAY V3 END CAP	10	\$34.56	WHITE
------------	--------------------	----	---------	-------

GROUNDING AND BONDING



E-BOSS GROUNDING AND BONDING

U-LUG	E-BOSS GROUNDING AND BONDING	20	\$4.71	MILL
-------	------------------------------	----	--------	------



008002S	GROUND WEEBLUG #1	20	\$11.67	SS
---------	-------------------	----	---------	----



008009P	ILSCO LAY IN LUG	20	\$13.61	SS
---------	------------------	----	---------	----



WIRE BND CLIP

008015S	WIRE BND CLIP	10	\$2.48	SS
---------	---------------	----	--------	----



ECOMOUNT 1 INVERTER KIT

PART NUMBER	DESCRIPTION	PACK SIZE	PRICE*	COLOR
ES20913	ECOMOUNT 1 INVERTER KIT	1	\$333.26	MILL
KIT INCLUDES	- TWO (2) EcoFoot2+ Base - FOUR (4) EcoMount Standoffs - Mounting Hardware - Strut To Mount Inverter On			

ECOMOUNT 2 INVERTER KIT

ES20914	ECOMOUNT 2 INVERTER KIT	1	\$513.26	MILL
KIT INCLUDES	- THREE (3) EcoFoot2+ Base - SIX (6) EcoMount Standoffs - Mounting Hardware - Strut To Mount Inverter On			

ECOFOOT MLPE BRACKET

ES10970	ECOFOOT MLPE BRACKET	1	\$5.68	MILL
---------	----------------------	---	--------	------

WIRE MANAGEMENT CLIPS 🕒 WHILE SUPPLIES LAST

008003S	ONE WIRE CLIP, SS, DCS 1306	500	\$0.40	SS
008004S	TWO WIRE CLIP, SS, DCS 1307	500	\$1.49	SS
008017S	HEYCO SUNRUNNER 2-S CLIP 100/B	500	\$1.11	SS
008018S	HEYCO SUNRUNNER 4-2U CLIP 100/B	500	\$1.40	SS
008019S	HEYCO SUNRUNNER CLIP 100/B	100	\$0.69	SS
008020S	HEYCO SUNRUNNER 4 CLIP 100/B	100	\$0.93	SS
🕒 205000S	ENPHASE ENGAGE CABLE CLIP	100	\$2.42	SS
🕒 008021S	SINGLE TRUNK CABLE CLIP	100	\$0.58	SS

