

UNIRAC

1411 BROADWAY BLVD. NE
ALBUQUERQUE, NM 87102 USA
PHONE: 505.242.6411
WWW.UNIRAC.COM

PRODUCT LINE:	ECOFOOT 2+
DRAWING TYPE:	ASSEMBLY & PARTS
DESCRIPTION:	SYSTEM OVERVIEW
REVISION DATE:	10/15/2025

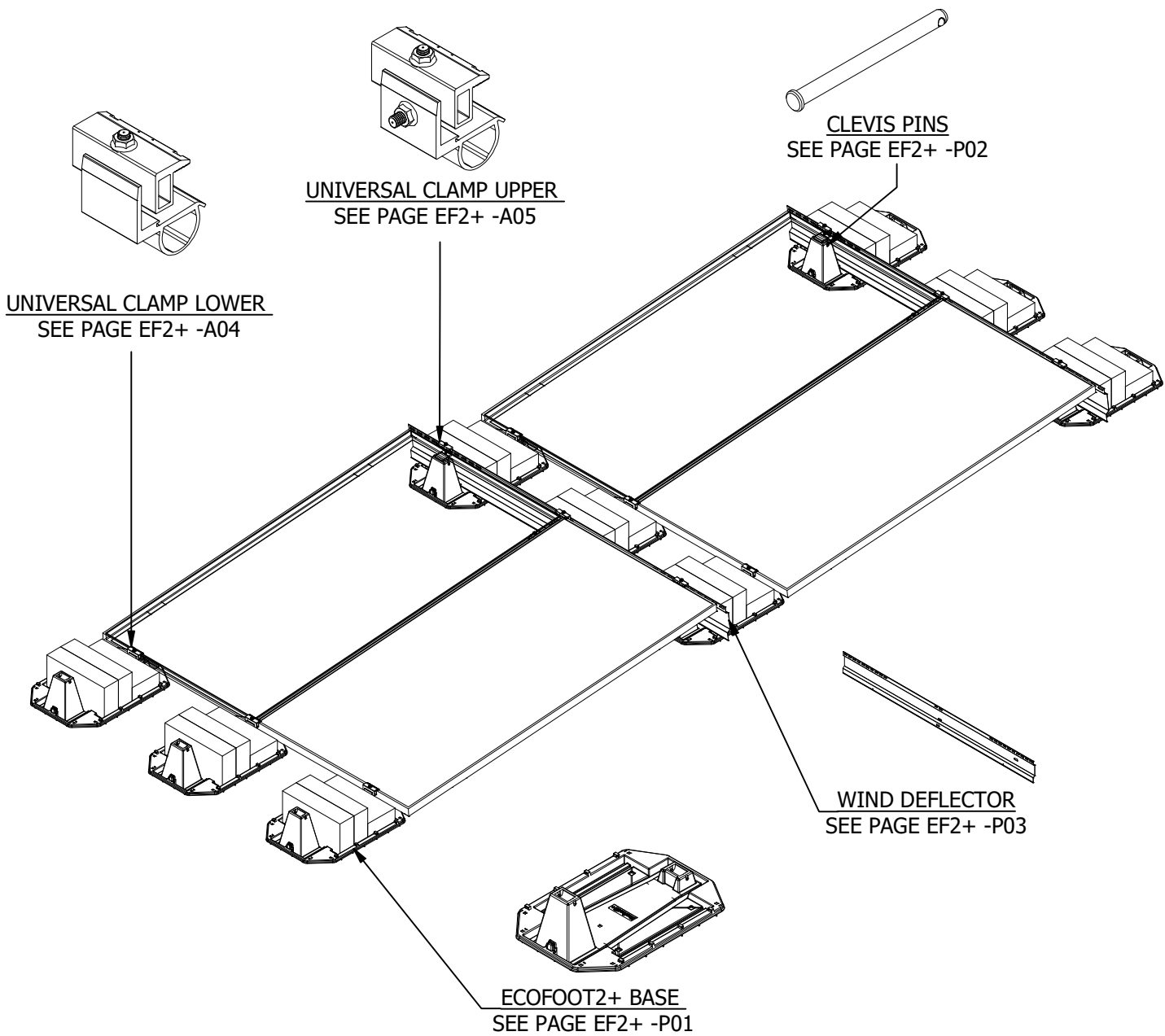
DRAWING NOT TO SCALE
ALL DIMENSIONS ARE
NOMINAL

PRODUCT PROTECTED BY
ONE OR MORE US PATENTS

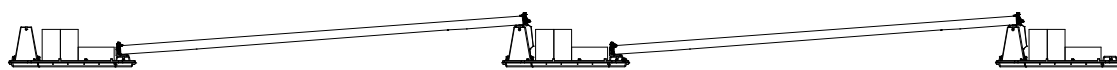
LEGAL NOTICE

EF2+ -A01

SHEET



OBLIQUE VIEW WITH PORTRAIT MODULE



SIDE VIEW



1411 BROADWAY BLVD. NE
ALBUQUERQUE, NM 87102 USA
PHONE: 505.242.6411
WWW.UNIRAC.COM

PRODUCT LINE:	ECOFOOT 2+
DRAWING TYPE:	ASSEMBLY & PARTS
DESCRIPTION:	SYSTEM OVERVIEW
REVISION DATE:	10/15/2025

DRAWING NOT TO SCALE
ALL DIMENSIONS ARE
NOMINAL

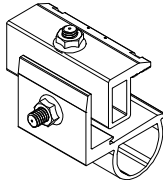
PRODUCT PROTECTED BY
ONE OR MORE US PATENTS

LEGAL NOTICE

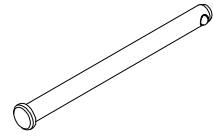
EF2+ -A02

SHEET

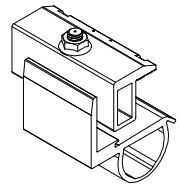
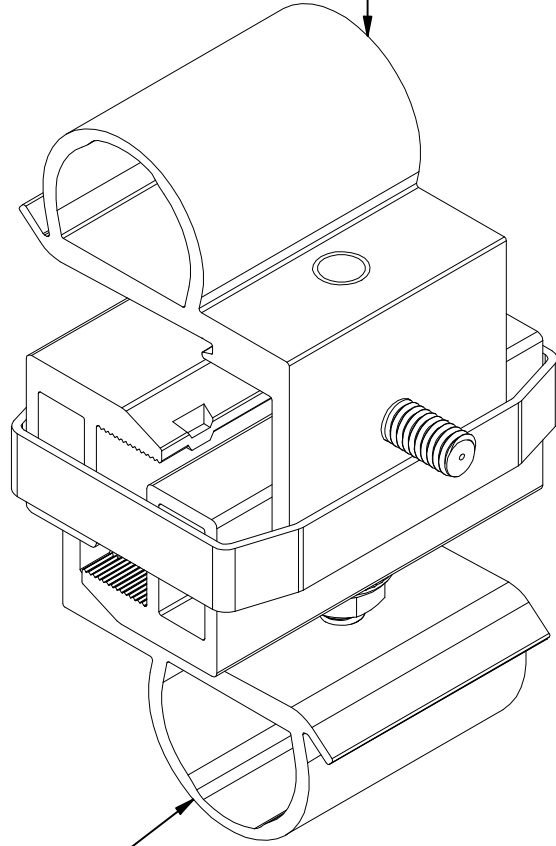
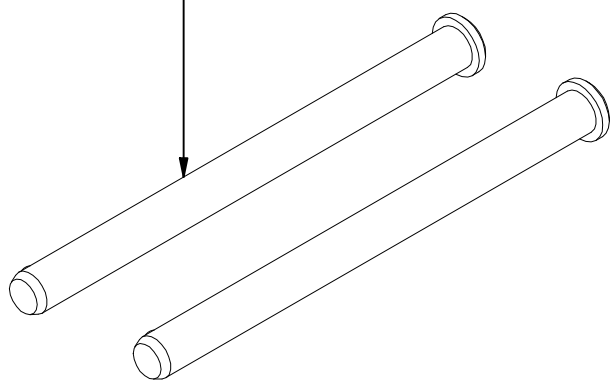
PART # TABLE	
P/N	DESCRIPTION
ES10466	ECOFOOT UNIVERSAL CLAMP KIT



UNIVERSAL CLAMP UPPER
SEE PAGE EF2+ -A05



CLEVIS PINS
SEE PAGE EF2+ -P02



UNIVERSAL CLAMP LOWER
SEE PAGE EF2+ -A04

ECOFOOT UNIVERSAL CLAMP KIT



1411 BROADWAY BLVD. NE
ALBUQUERQUE, NM 87102 USA
PHONE: 505.242.6411
WWW.UNIRAC.COM

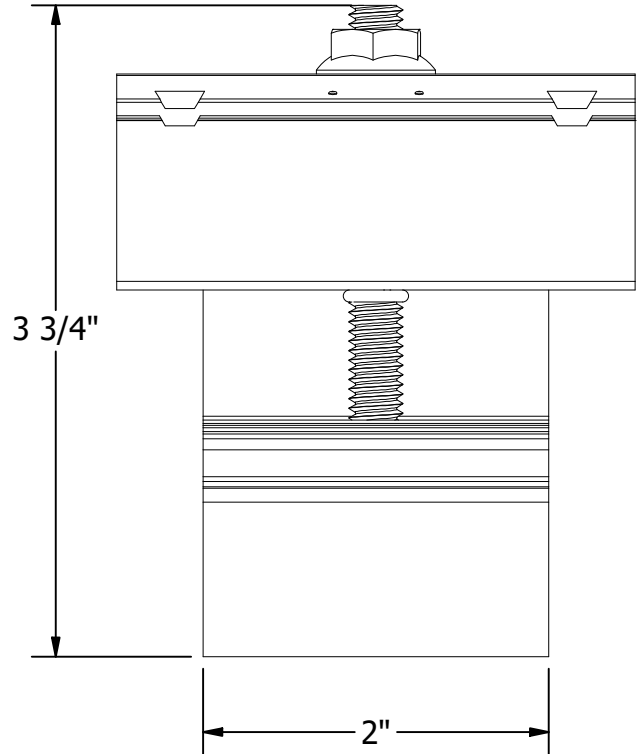
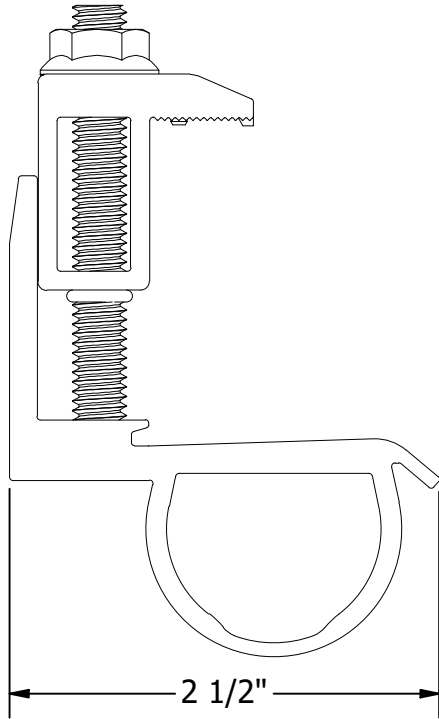
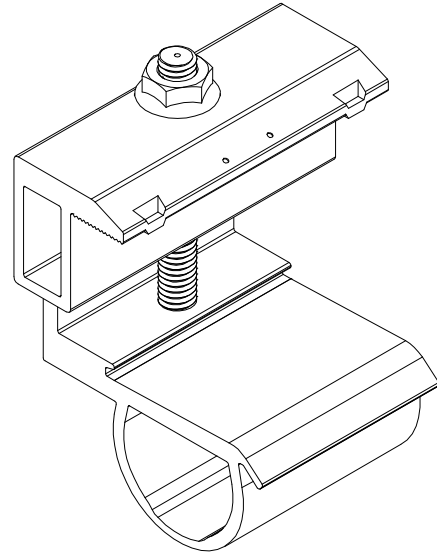
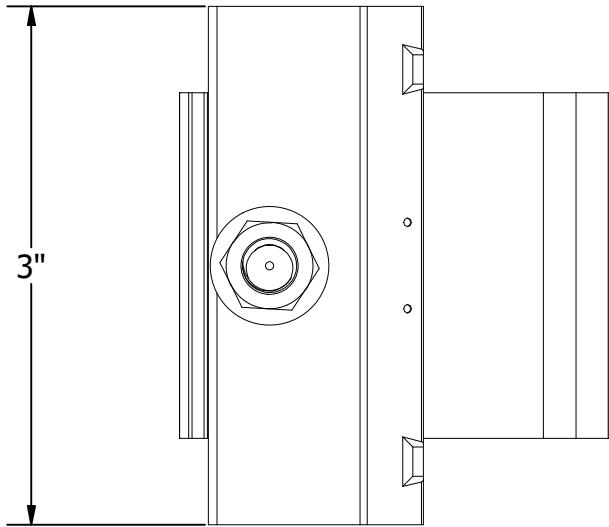
PRODUCT LINE:	ECOFOOT 2+
DRAWING TYPE:	PARTS ASSEMBLY
DESCRIPTION:	UNIVERSAL CLAMP KIT
REVISION DATE:	10/15/2025

DRAWING NOT TO SCALE
ALL DIMENSIONS ARE
NOMINAL

PRODUCT PROTECTED BY
ONE OR MORE US PATENTS
LEGAL NOTICE

EF2+ -A03
SHEET

PART # TABLE	
P/N	DESCRIPTION
ES10459	ECOFOOT UNIVERSAL CLAMP LOWER



UNIVERSAL CLAMP LOWER

UNIRAC

1411 BROADWAY BLVD. NE
 ALBUQUERQUE, NM 87102 USA
 PHONE: 505.242.6411
 WWW.UNIRAC.COM

PRODUCT LINE:	ECOFOOT 2+
DRAWING TYPE:	PARTS ASSEMBLY
DESCRIPTION:	UNIVERSAL CLAMP LOWER
REVISION DATE:	10/15/2025

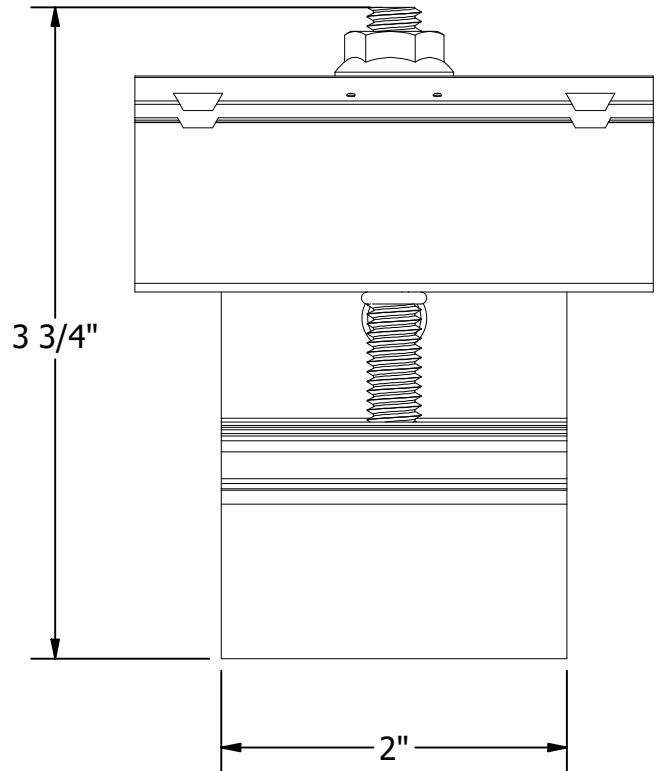
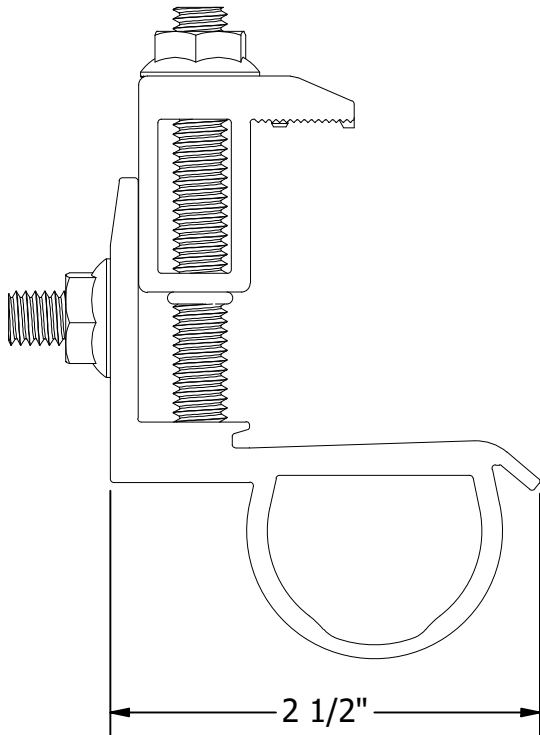
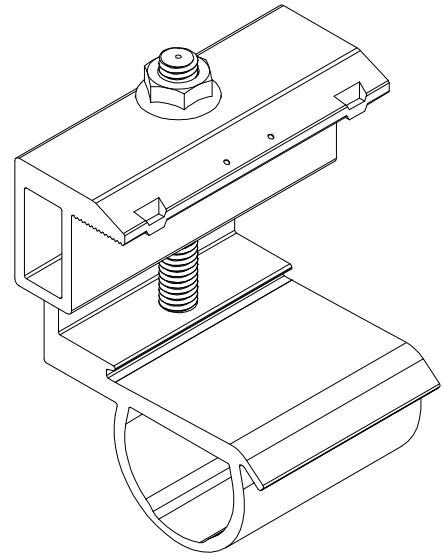
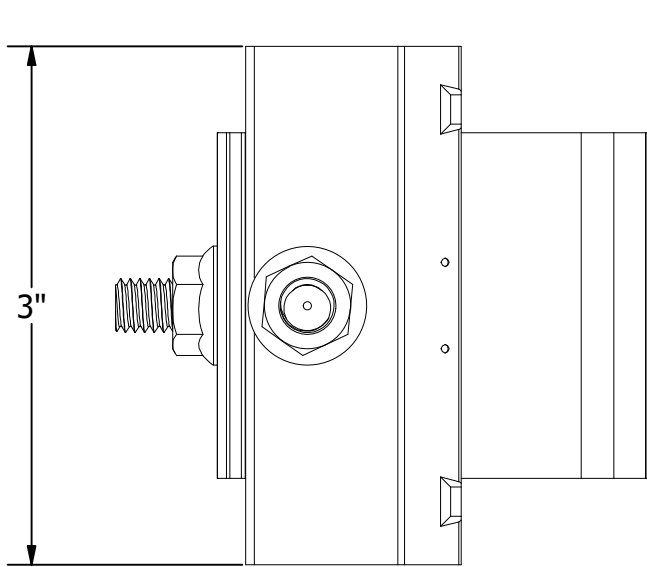
DRAWING NOT TO SCALE
 ALL DIMENSIONS ARE
 NOMINAL

PRODUCT PROTECTED BY
 ONE OR MORE US PATENTS
 LEGAL NOTICE

EF2+ -A04

SHEET

PART # TABLE	
P/N	DESCRIPTION
ES10458	ECOFOOT UNIVERSAL CLAMP UPPER



UNIVERSAL CLAMP UPPER

UNIRAC

1411 BROADWAY BLVD. NE
ALBUQUERQUE, NM 87102 USA
PHONE: 505.242.6411
WWW.UNIRAC.COM

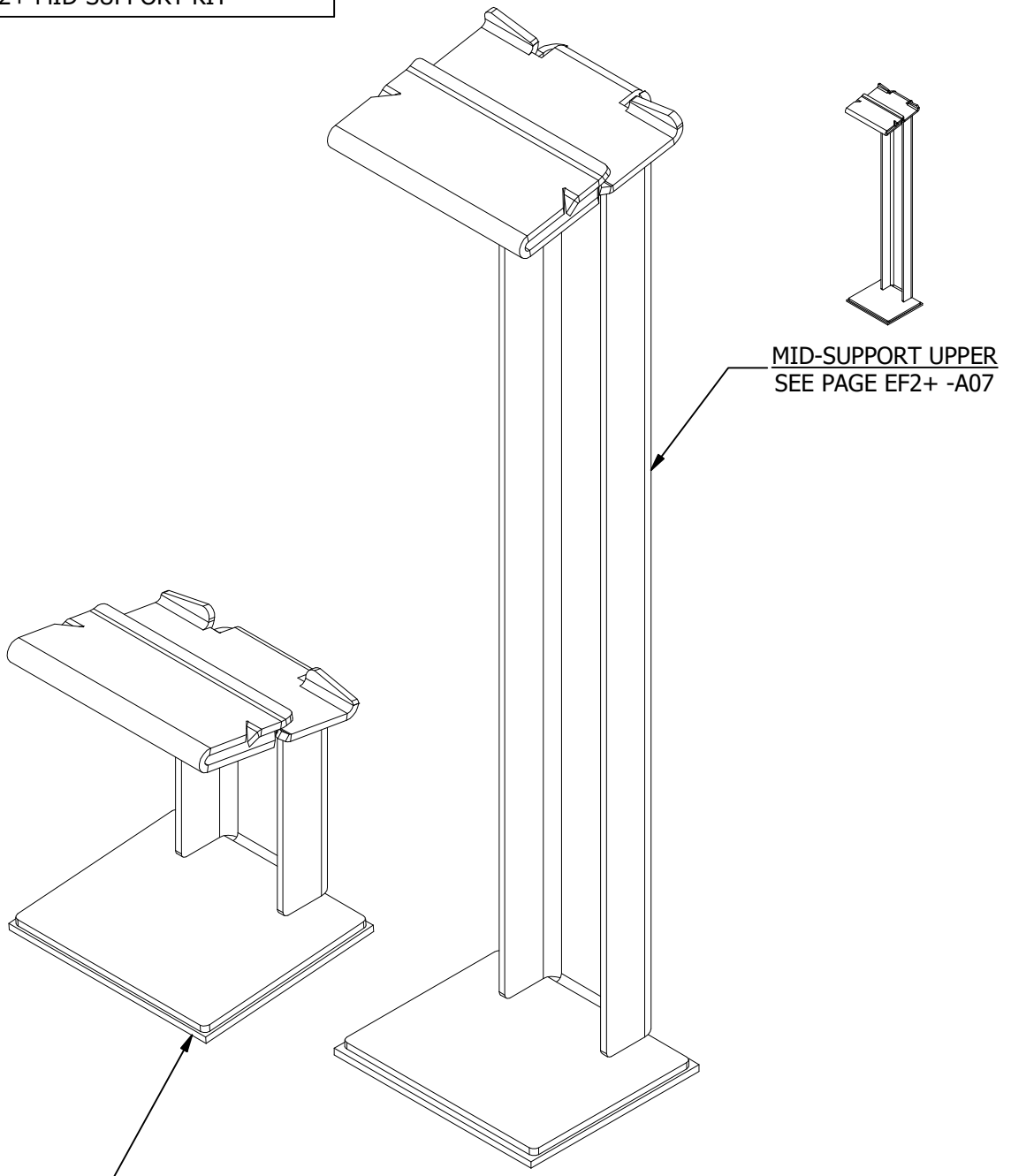
PRODUCT LINE:	ECOFOOT 2+
DRAWING TYPE:	PARTS ASSEMBLY
DESCRIPTION:	UNIVERSAL CLAMP UPPER
REVISION DATE:	10/15/2025

DRAWING NOT TO SCALE
ALL DIMENSIONS ARE
NOMINAL

PRODUCT PROTECTED BY
ONE OR MORE US PATENTS
LEGAL NOTICE

EF2+ -A05
SHEET

PART # TABLE	
P/N	DESCRIPTION
ES11203	ECOFOOT2+ MID-SUPPORT KIT



MID-SUPPORT LOWER
SEE PAGE EF2+ -A08

MID-SUPPORT UPPER
SEE PAGE EF2+ -A07

MID-SUPPORT KIT



1411 BROADWAY BLVD. NE
ALBUQUERQUE, NM 87102 USA
PHONE: 505.242.6411
WWW.UNIRAC.COM

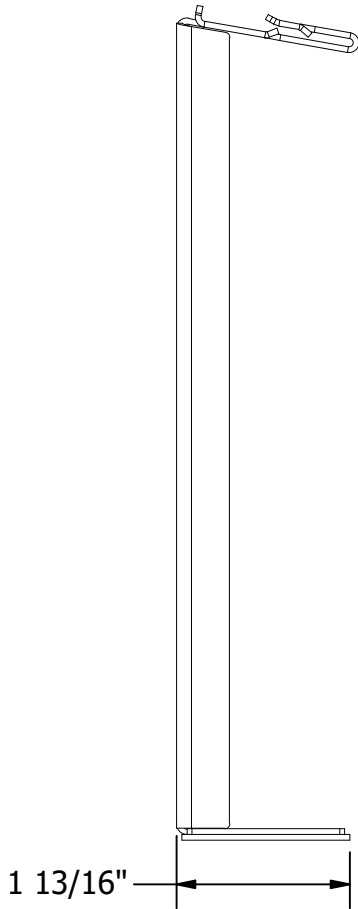
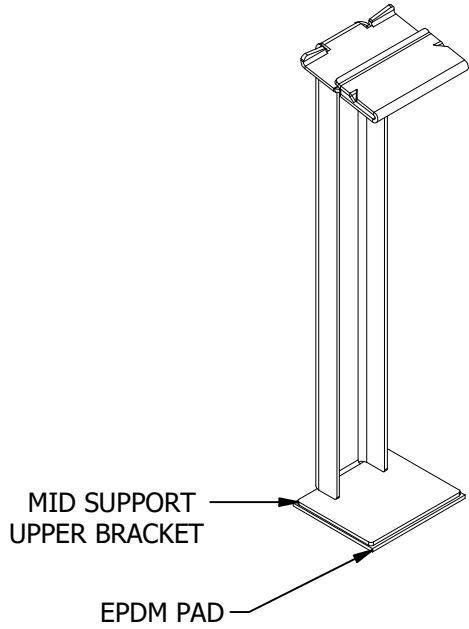
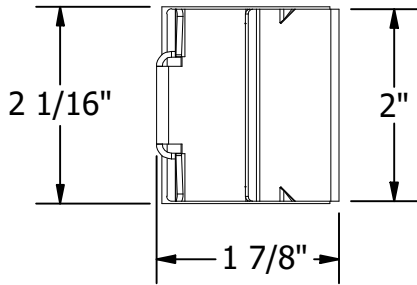
PRODUCT LINE:	ECOFOOT 2+
DRAWING TYPE:	PARTS ASSEMBLY
DESCRIPTION:	MID-SUPPORT KIT
REVISION DATE:	10/15/2025

DRAWING NOT TO SCALE
ALL DIMENSIONS ARE
NOMINAL

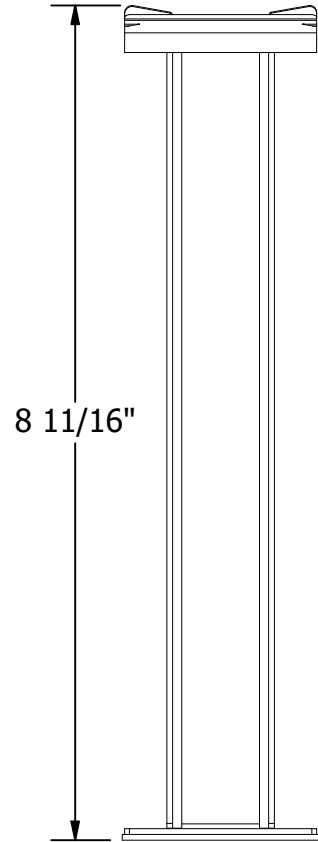
PRODUCT PROTECTED BY
ONE OR MORE US PATENTS
LEGAL NOTICE

EF2+ -A06
SHEET

PART # TABLE	
P/N	DESCRIPTION
ES11207	ECOFOOT 2+ MID SUPPORT UPPER



MID-SUPPORT UPPER



1411 BROADWAY BLVD. NE
 ALBUQUERQUE, NM 87102 USA
 PHONE: 505.242.6411
 WWW.UNIRAC.COM

PRODUCT LINE:	ECOFOOT 2+
DRAWING TYPE:	PARTS ASSEMBLY
DESCRIPTION:	MID-SUPPORT UPPER
REVISION DATE:	10/15/2025

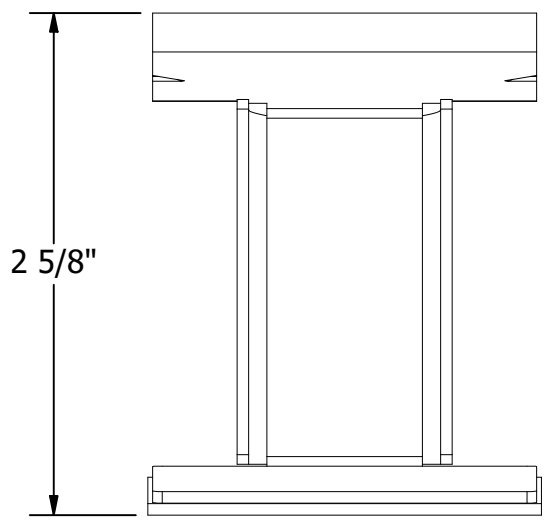
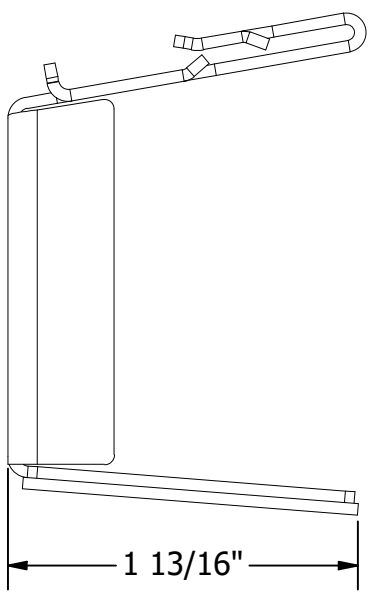
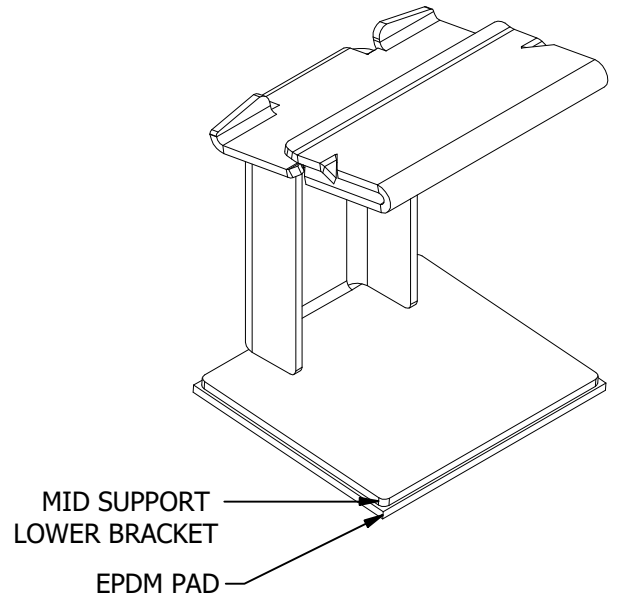
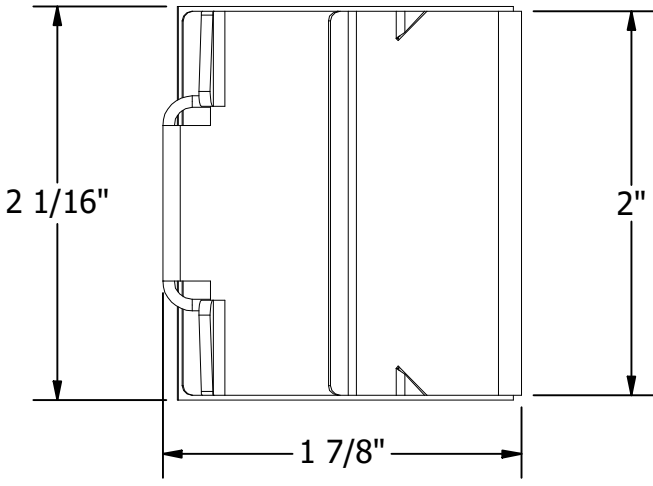
DRAWING NOT TO SCALE
 ALL DIMENSIONS ARE
 NOMINAL

PRODUCT PROTECTED BY
 ONE OR MORE US PATENTS
 LEGAL NOTICE

EF2+ -A07

SHEET

PART # TABLE	
P/N	DESCRIPTION
ES11208	ECOFOOT 2+ MID SUPPORT LOWER



MID-SUPPORT LOWER

UNIRAC
 1411 BROADWAY BLVD. NE
 ALBUQUERQUE, NM 87102 USA
 PHONE: 505.242.6411
 WWW.UNIRAC.COM

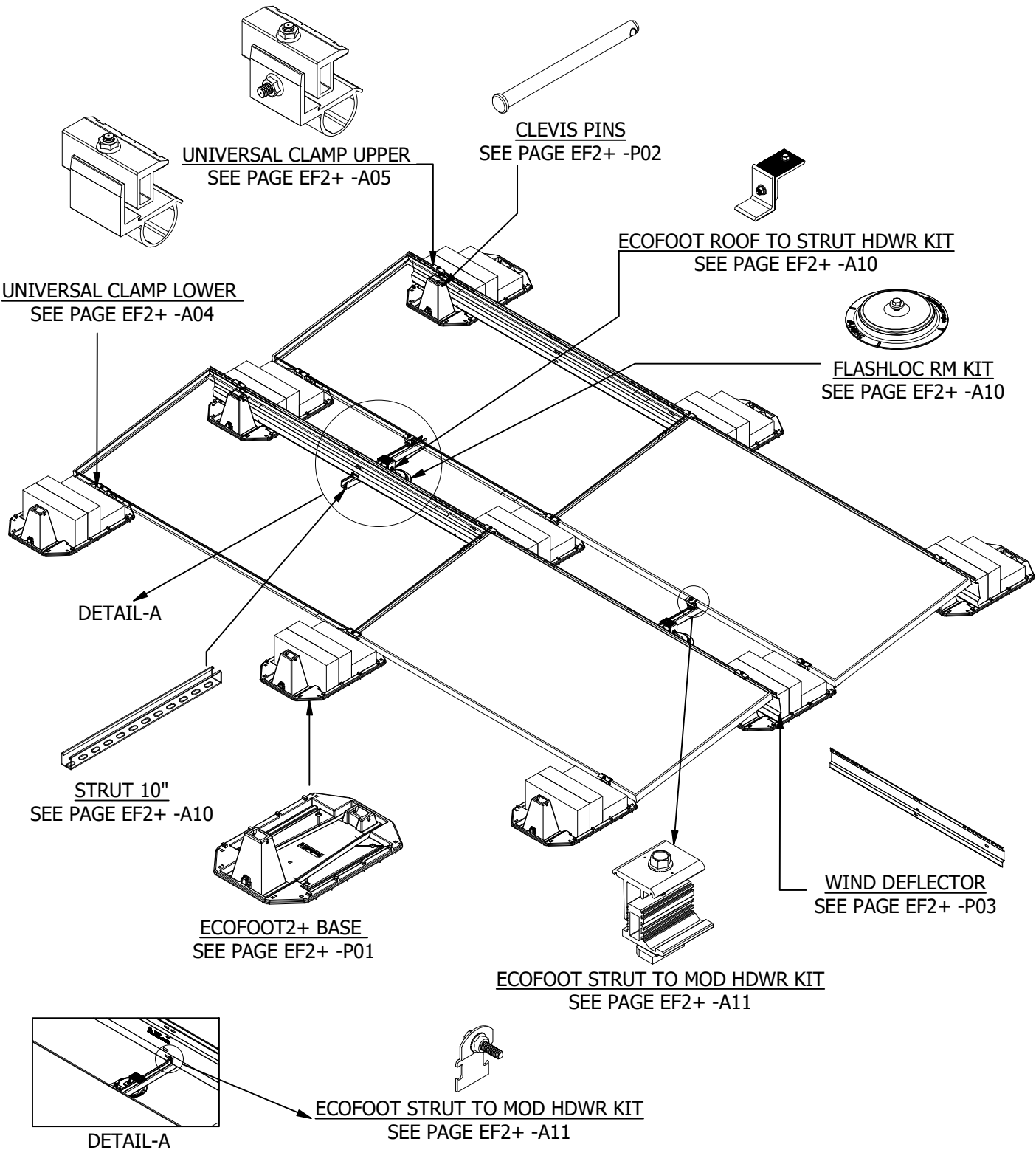
PRODUCT LINE:	ECOFOOT 2+
DRAWING TYPE:	PARTS ASSEMBLY
DESCRIPTION:	MID-SUPPORT LOWER
REVISION DATE:	10/15/2025

DRAWING NOT TO SCALE
 ALL DIMENSIONS ARE
 NOMINAL

PRODUCT PROTECTED BY
 ONE OR MORE US PATENTS

LEGAL NOTICE

EF2+ -A08
 SHEET



OBLIQUE VIEW WITH FLASHLOC RM



1411 BROADWAY BLVD. NE
ALBUQUERQUE, NM 87102 USA
PHONE: 505.242.6411
WWW.UNIRAC.COM

PRODUCT LINE:	ECOFOOT 2+
DRAWING TYPE:	ASSEMBLY & PARTS
DESCRIPTION:	SYSTEM OVERVIEW
REVISION DATE:	10/15/2025

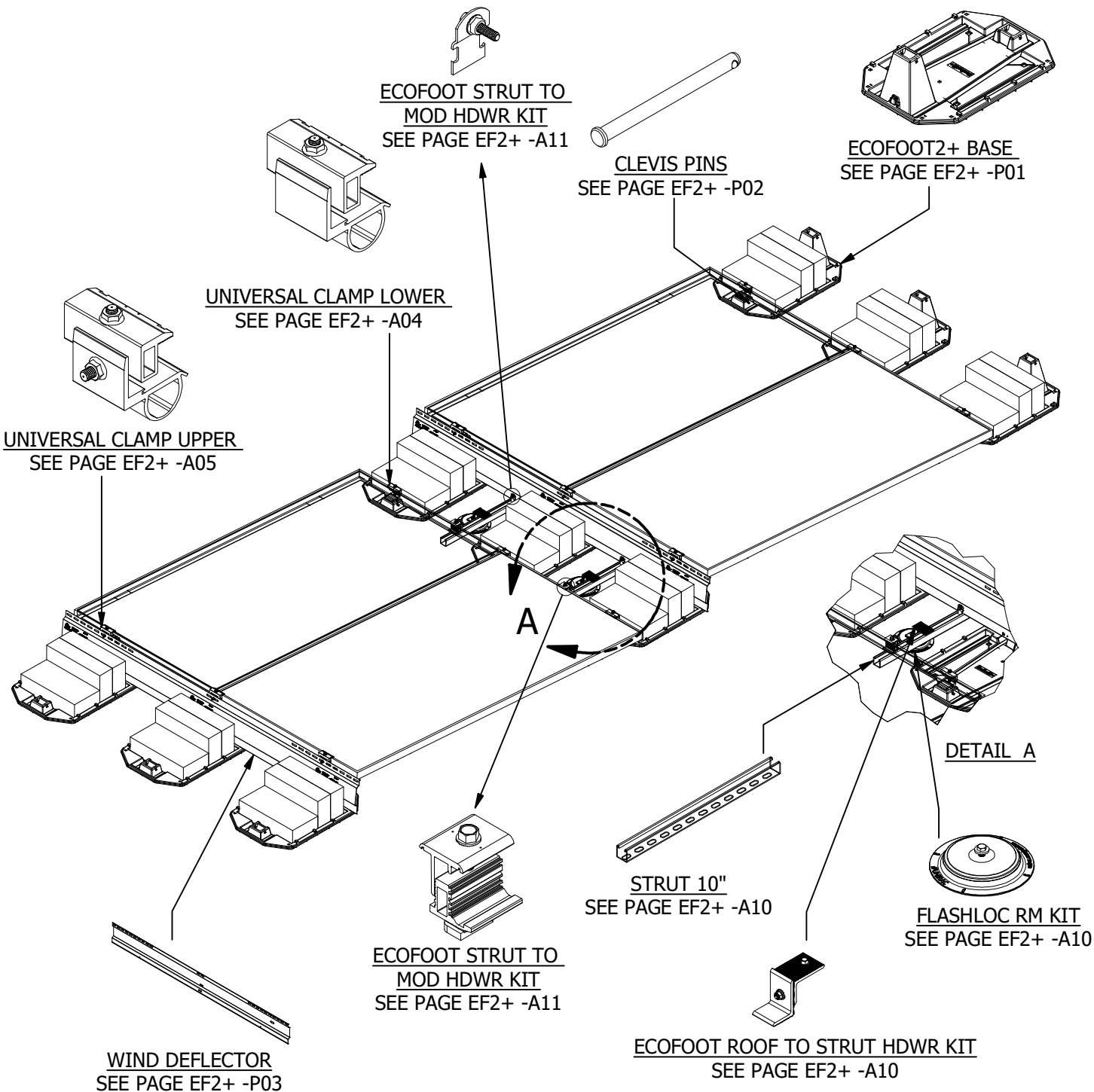
DRAWING NOT TO SCALE
ALL DIMENSIONS ARE
NOMINAL

PRODUCT PROTECTED BY
ONE OR MORE US PATENTS

LEGAL NOTICE

EF2+ -A09

SHEET



OBLIQUE VIEW WITH FLASHLOC RM

UNIRAC

1411 BROADWAY BLVD. NE
ALBUQUERQUE, NM 87102 USA
PHONE: 505.242.6411
WWW.UNIRAC.COM

PRODUCT LINE:	ECOFOOT 2+
DRAWING TYPE:	ASSEMBLY & PARTS
DESCRIPTION:	SYSTEM OVERVIEW
REVISION DATE:	10/15/2025

DRAWING NOT TO SCALE
ALL DIMENSIONS ARE
NOMINAL

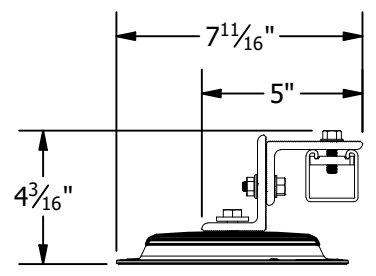
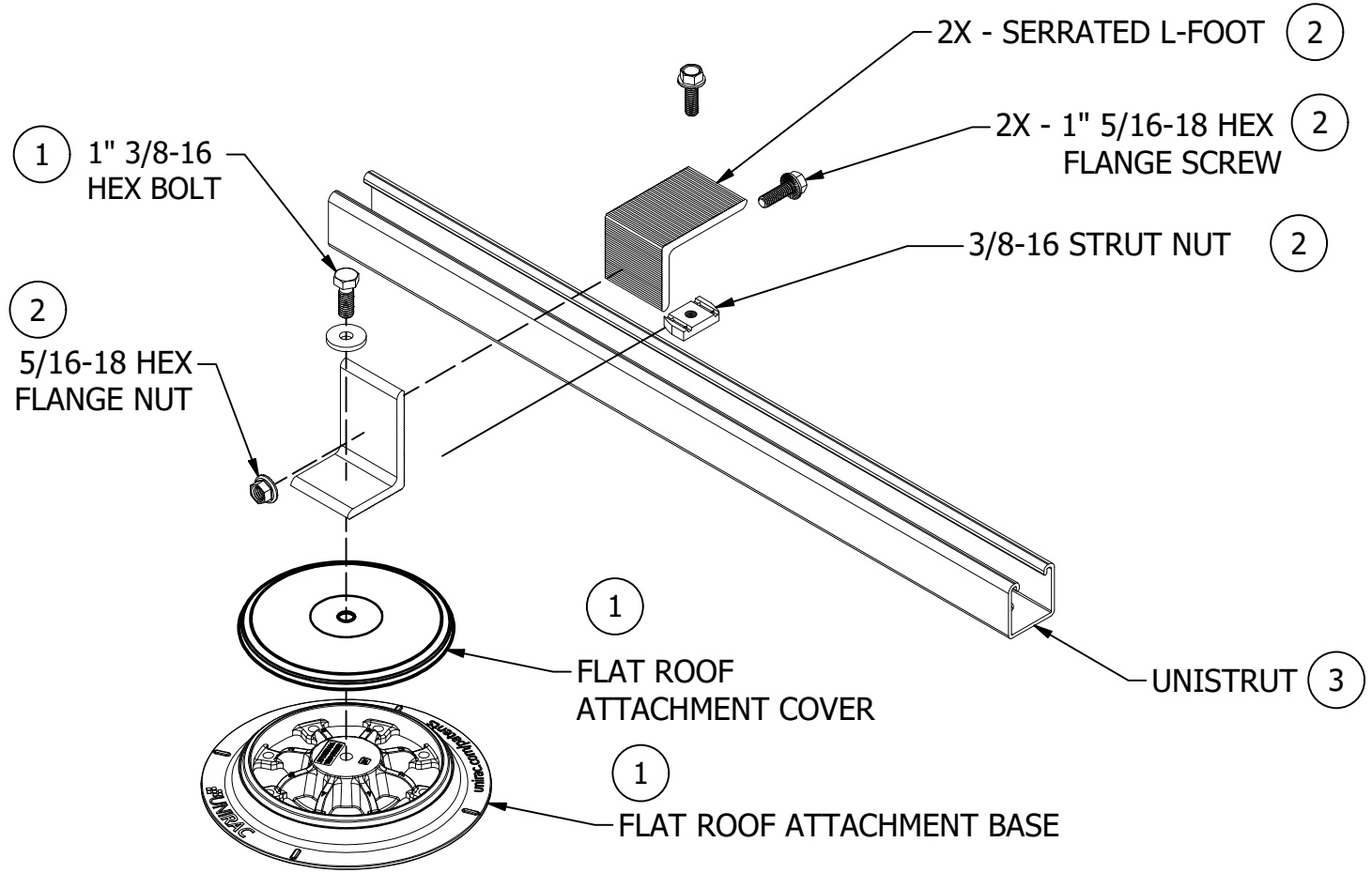
PRODUCT PROTECTED BY
ONE OR MORE US PATENTS

LEGAL NOTICE

EF2+ -A09A

SHEET

ASSEMBLY # TABLE		
ITEM	P/N	DESCRIPTION
1	310999	FLASHLOC RM KIT
2	ES10843	ECOFOOT ROOF TO STRUT HDWR KIT
3	ES20501	B22 GALVANIZED STRUT, 10'



FLASHLOC RM ATTACHMENT

UNIRAC
 1411 BROADWAY BLVD. NE
 ALBUQUERQUE, NM 87102 USA
 PHONE: 505.242.6411
 WWW.UNIRAC.COM

PRODUCT LINE:	ECOFOOT 2+
DRAWING TYPE:	PARTS ASSEMBLY
DESCRIPTION:	FLASHLOC RM ATT
REVISION DATE:	10/15/2025

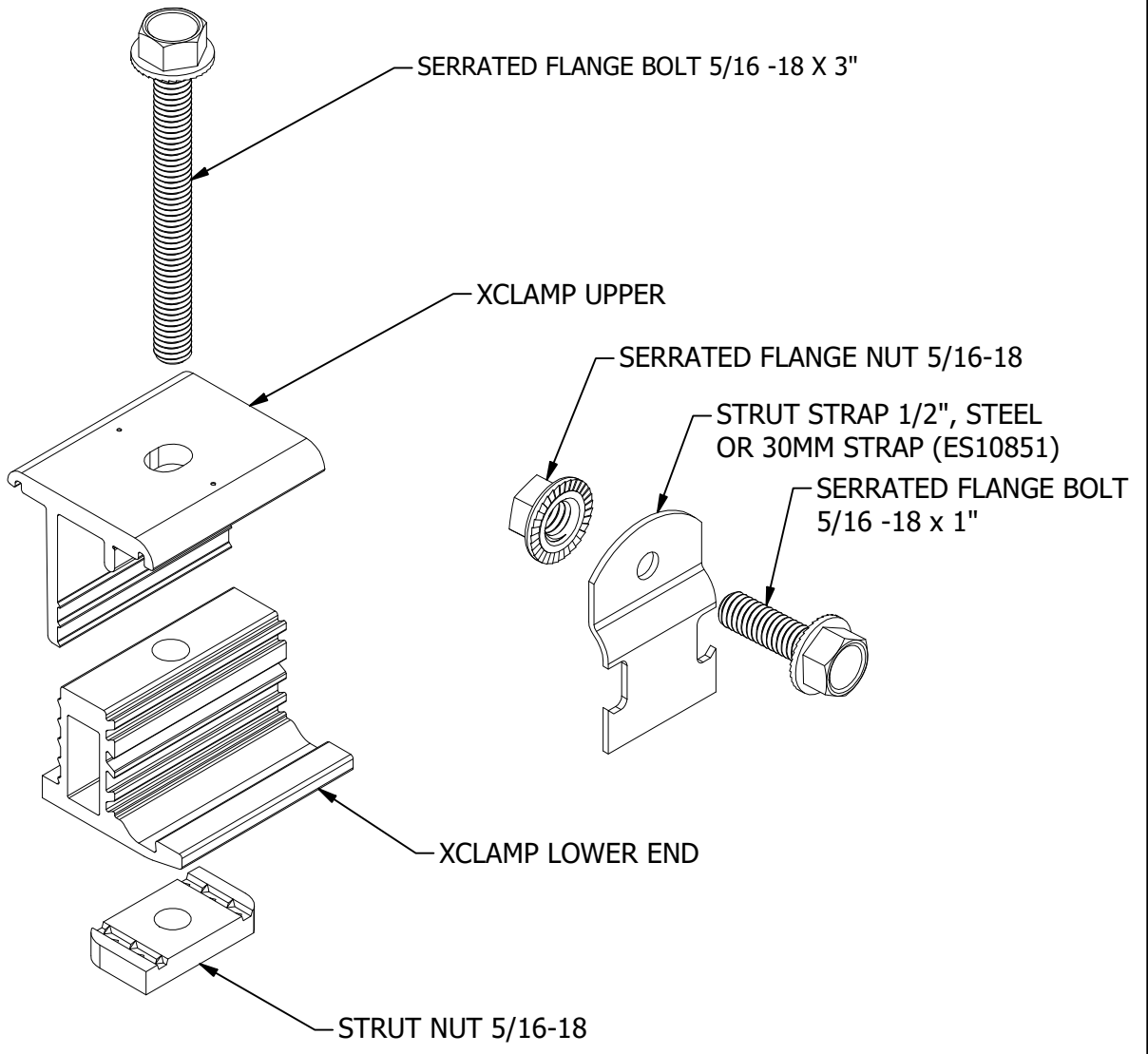
DRAWING NOT TO SCALE
 ALL DIMENSIONS ARE
 NOMINAL

PRODUCT PROTECTED BY
 ONE OR MORE US PATENTS

LEGAL NOTICE

EF2+ -A10
 SHEET

ASSEMBLY # TABLE		
ITEM	P/N	DESCRIPTION
1	ES10844	ECOFOOT STRUT TO MOD HDWR KIT
2	ES10851	ECOFOOT STRUT TO MOD KIT 30MM



ECOFOOT STRUT TO MOD HDWR KIT

UNIRAC
 1411 BROADWAY BLVD. NE
 ALBUQUERQUE, NM 87102 USA
 PHONE: 505.242.6411
 WWW.UNIRAC.COM

PRODUCT LINE:	ECOFOOT 2+
DRAWING TYPE:	PARTS ASSEMBLY
DESCRIPTION:	ECOFOOT STRUT TO MOD HDWR KIT
REVISION DATE:	10/15/2025

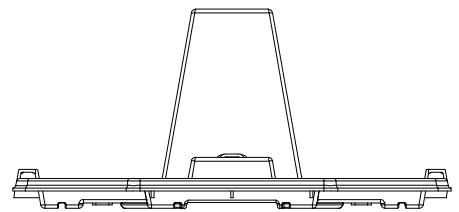
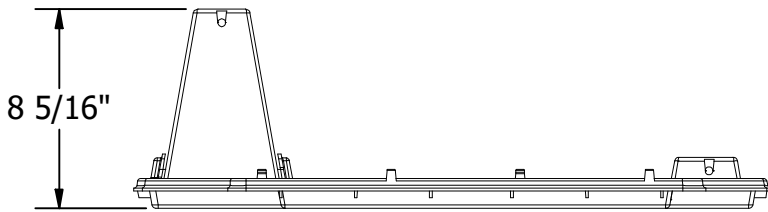
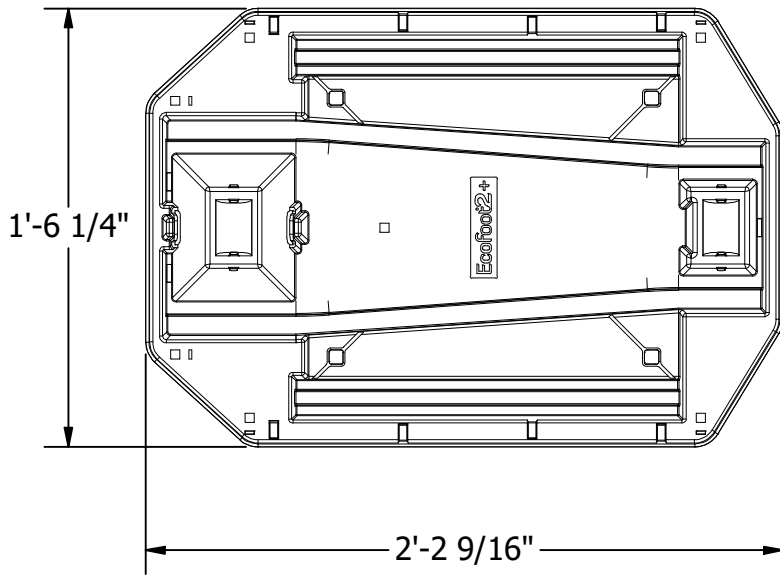
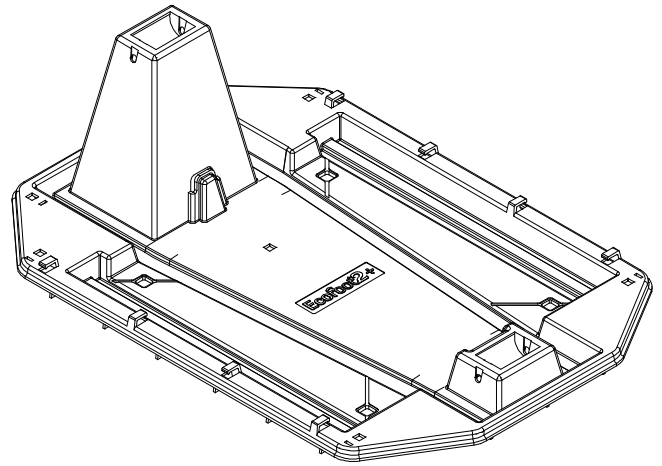
DRAWING NOT TO SCALE
 ALL DIMENSIONS ARE
 NOMINAL

PRODUCT PROTECTED BY
 ONE OR MORE US PATENTS

LEGAL NOTICE

EF2+ -A11
 SHEET

PART # TABLE	
P/N	DESCRIPTION
ES20207	ECOFOOT2+ BASE



BASE

UNIRAC

1411 BROADWAY BLVD. NE
 ALBUQUERQUE, NM 87102 USA
 PHONE: 505.242.6411
 WWW.UNIRAC.COM

PRODUCT LINE: ECOFOOT 2+

DRAWING TYPE: PART

DESCRIPTION: BASE

REVISION DATE: 10/15/2025

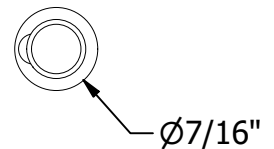
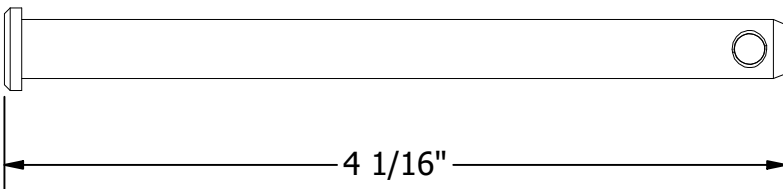
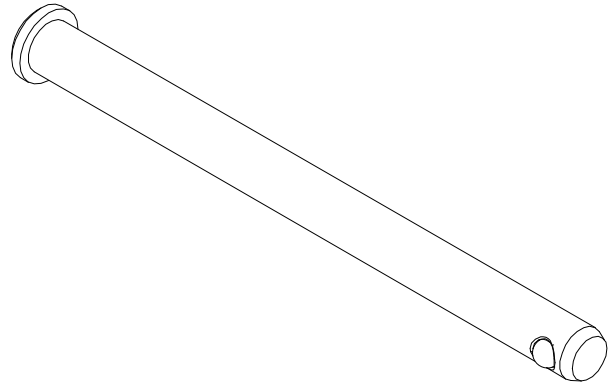
DRAWING NOT TO SCALE
 ALL DIMENSIONS ARE
 NOMINAL

PRODUCT PROTECTED BY
 ONE OR MORE US PATENTS
 LEGAL NOTICE

EF2+ -P01

SHEET

PART # TABLE	
P/N	DESCRIPTION
ES10476-CP	CLEVIS PIN



CLEVIS PIN



1411 BROADWAY BLVD. NE
 ALBUQUERQUE, NM 87102 USA
 PHONE: 505.242.6411
 WWW.UNIRAC.COM

PRODUCT LINE: ECOFOOT 2+

DRAWING TYPE: PART

DESCRIPTION: CLEVIS PIN

REVISION DATE: 10/15/2025

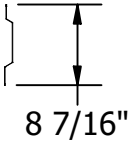
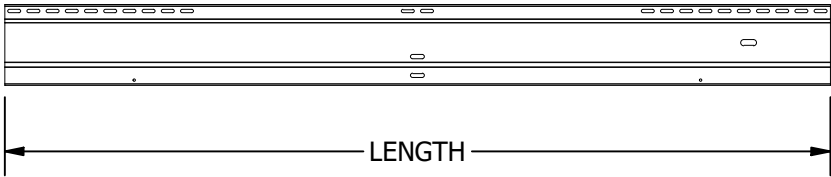
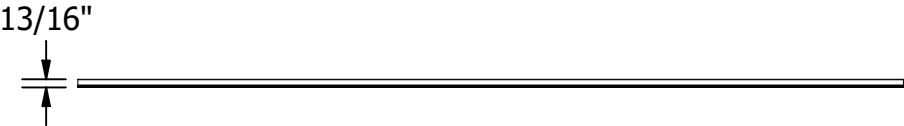
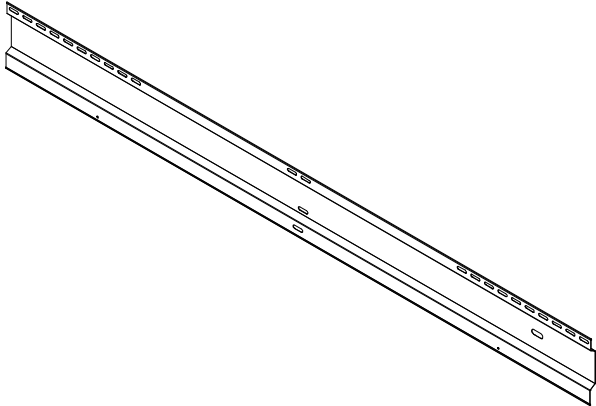
DRAWING NOT TO SCALE
 ALL DIMENSIONS ARE
 NOMINAL

PRODUCT PROTECTED BY
 ONE OR MORE US PATENTS
 LEGAL NOTICE

EF2+ -P02

SHEET

PART # TABLE		
P/N	DESCRIPTION	LENGTH
ES20311A	ECOFOOT2+ 44" WIND DEFLECTOR	44"
ES20311B	ECOFOOT2+ 70" WIND DEFLECTOR	70"
ES20311C	ECOFOOT2+ 82" WIND DEFLECTOR	82"
ES20311H	ECOFOOT2+ 86" WIND DEFLECTOR	86"
ES20311K	ECOFOOT2+ 92" WIND DEFLECTOR	92"



WIND DEFLECTOR

UNIRAC
 1411 BROADWAY BLVD. NE
 ALBUQUERQUE, NM 87102 USA
 PHONE: 505.242.6411
 WWW.UNIRAC.COM

PRODUCT LINE:	ECOFOOT 2+
DRAWING TYPE:	PART
DESCRIPTION:	WIND DEFLECTOR
REVISION DATE:	10/15/2025

DRAWING NOT TO SCALE
 ALL DIMENSIONS ARE
 NOMINAL

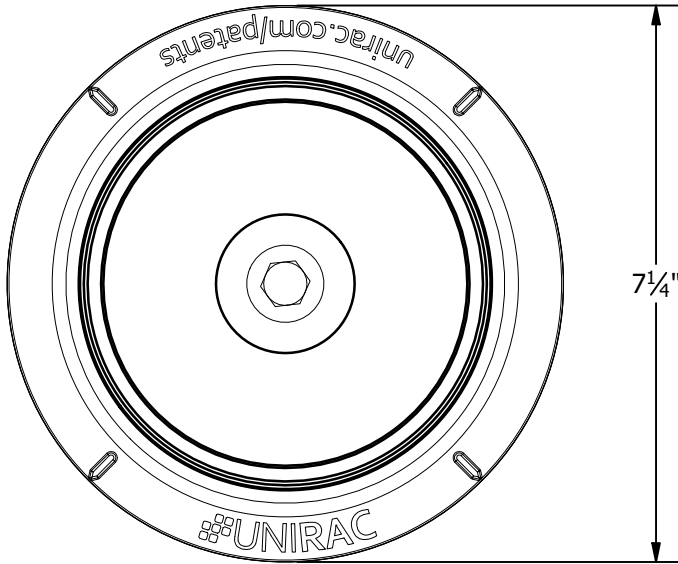
PRODUCT PROTECTED BY
 ONE OR MORE US PATENTS

LEGAL NOTICE

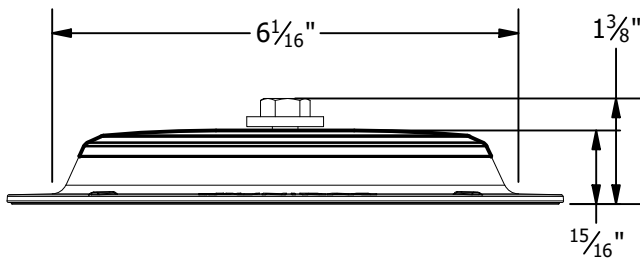
EF2+ - P03
 SHEET

NOTES:

1. ATTACHMENT CAN ACCOMMODATE ROOFING SCREW SIZES #12 - #15. FASTENER SIZE, LENGTH, AND QUANTITY TO BE SELECTED BY STRUCTURAL ENGINEER OF RECORD WHEN DESIGNING FOR THE SPECIFIC PROJECT CONSTRUCTION AND CAPACITY.
2. REFER TO THE UNIRAC INSTALLATION GUIDE FOR PROPER USE OF CHEM LINK M1 AND ONE-PART SEALANTS FOR WATER TIGHT INSTALLATION.



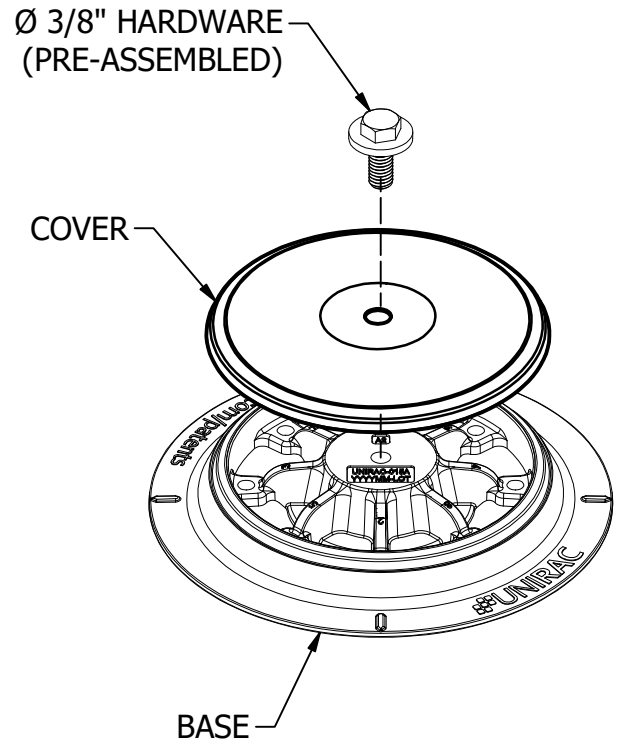
TOP VIEW



Ø 3/8" HARDWARE
(PRE-ASSEMBLED)

COVER

BASE



PART # TABLE	
P/N	DESCRIPTION
310999	FLASHLOC RM KIT

ULTIMATE TEST LOAD (WITH 8 ROOF FASTENERS)

UPLIFT ULTIMATE CAPACITY	6,670 lbs.
SHEAR ULTIMATE CAPACITY	5,760 lbs.



1411 BROADWAY BLVD. NE
ALBUQUERQUE, NM 87102 USA
PHONE: 505.242.6411
WWW.UNIRAC.COM

PRODUCT LINE:	RM
DRAWING TYPE:	ASSEMBLY DETAIL
DESCRIPTION:	FLASHLOC RM KIT
REVISION DATE:	10/16/2025

DRAWING NOT TO SCALE
ALL DIMENSIONS ARE
NOMINAL

PRODUCT PROTECTED BY
ONE OR MORE US PATENTS
LEGAL NOTICE

RMF-A01

SHEET